

Grand Medicine Lesson 87

MAILING ADDRESS:
19950 Sun Valley Road
Colfax, CA 95713

PHONE: 530-878-1119, FAX: 530-878-1119
E-MAIL: iridology@netzero.net
WEB PAGE: <http://www.joyfullivingservices.com>

The Personality Iridology Areas—#59

The following is drawn from *The GRAND MEDICINE Personality Iridology Student Handbook*, which based on the forthcoming book, *IRIS-2, Personality Iridology*, by Leonard Mehlmauer, ND. It includes material on one of some 60 Areas within the Iris-2 (Personality Iridology) map, with a brief overview of the Areas plus a description of one of them, Area #59. The terms “Solid” (mental), “Peculiar” (emotional) and “Vital” (physical) refer to the three basic personality types which will be described in detail in future Eyology Lessons. “Wisdom Culture”, “Structure”, “Practice Consideration Group”, and so on are described in the above-noted forthcoming book.

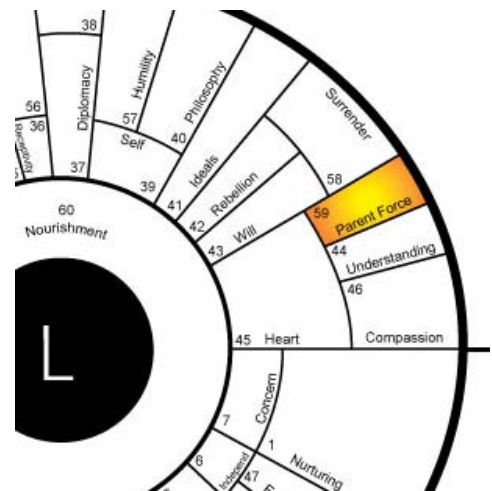
Grand Medicine presents full 6-Day Courses on Personality Iridology (Iris-2), which includes complete details of (1) how to determine and evaluate personality in the irises, and (2) how to do the same in the behavior of others—and ones self—and grow beyond it. The next such course: University of Kent, UK. Details: gm@grandmedicine.com or fone 619-240-3711.

The Iris-2 Areas (Intro/overview):

The 60 Iris-2 map “Areas” describe or relate to the location of specific traits or personality characteristics based on the equally specific location of the various Iris-2 markings. Each Area of the iris is associated with certain emotions, thoughts, and attitudes or “traits”. The markers we see in Iris-2, while the same as in Iris-1, have different names and different meanings. Mainly, they are *Jewels* (Iris-1 term = pigment spot), *Flowers* (Iris-1 term = Lacuna) and *Streams* (Iris-1 term = close iris fibers). In barest outline, Jewels are mainly mental, Flowers emotional, and Streams physical in meaning.

Markers within these areas include talents, abilities, skills and other traits of many kinds, active or latent. We find some of these amazing—like the ability to memorize thousands of numbers at a glance and recite them without error, or hear a song and play it on the piano instantly and perfectly. While we can delight in them in the worldly sense, still they are merely functions, tendencies, qualities to be used intelligently and with compassion—and transcended.

The presence of Jewel, Flower and Stream qualities in a given Area changes the interpretation of the eye pattern by modifying the energy involved in, e.g., a given Structure. They also describe various qualities of energy in personality, including a wide variety of emotional/attitude tendencies: writing or speech talents, specific feelings toward mother or father, and so on—even specific personal details of one’s life, some of which details have already happened. Some talents and skills may never get tested, used, developed or exploited, some modified to one or

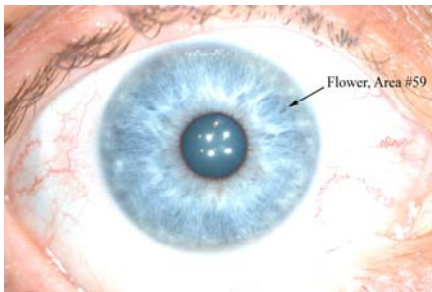


another degree by the general Structure, by introversion or extroversion, by R brain or L brain energy, and so on. These traits represent additions to the overall vibratory pattern of the individual. Most of them—but not all—are genetic. Certain Jewels, e.g., can and will in some cases be added as life continues.

Description of Area #59 – PARENT FORCE

For Iris-1, Area #59 is represented by the clavicles (collar bones). They support the arms and shoulders and provide them with range of motion. For Iris-2, this Area in the R eye is the husbanding or *Father Force*, the controlling, challenging and demanding influence in life. Father Force is secondary to the Mother Force and is associated with Divine Consciousness, with concentration, and the Conscious Process. It is the demanding energy, requiring energy, challenging us to grow up and grow beyond ourselves. In the L eye it is the Mother Force center. *Mother Force* is primary and is associated with the Divine Spirit Current of Eternal Energy, with Conductivity, and the yogic infusion of the body-mind by Divine Love-Bliss, the loving, nurturing and supporting energy and force.

Connecting energy unites us with everything, makes us feel loved, familiar, and evokes the loving and radiant response in us. When Mother Force is lacking or failing, one feels too much challenged by life (Father Force), even depressed and overwhelmed, oversensitive to the Father Force, disconnected from the Divine Sustaining force, feeling negative about existence, becoming self-protective and anxious.



A Jewel in the R eye activates the Solid in this Area: a fearful acquiescence to Father Force. A Jewel in the L eye says the same basic negative response took place to the Mother Force—and will continue to be played out until sufficiently (profoundly) understood and transcended. A Flower in the R eye suggests a sorrowful reaction to Father Force; in the L eye to the Mother Force. A Stream in the R iris = a typical Vital-like reaction to the father: anger and adolescent rebellion. If in the L iris, the same reaction to Mother Force will be in place.

The Lesson: To be truly manly or womanly, to be courageous and strong in this, we have to pass thru certain “rites of passage”. These passages were traditionally available to us thru indigenous cultures. Unfortunately for Western Culture, they have been bypassed, leaving us with having to address this very important issue in our lives of dealing with Mother and Father Forces. A true Culture of Wisdom (as Described by Adi Da) has the needed and required mechanisms to guide us thru to true manhood and womanhood regarding these forces.

Rx: Carefully study and learn about these two crucial-to-human-adulthood forces—the Mother Force and the Father Force (see Part 2 in your book). A true Practice Consideration Group, as a part of a Wisdom Culture, is most helpful. Affirm: “I ask God’s Guidance to a true Wisdom Culture, where I may submit to the embrace of Mother Force and the challenge of Father Force, so that I may move with elegance thru life.”

References:

- IRIS-2—Personality Iridology, by Leonard Mehlmauer, ND; forthcoming ©2009, San Diego, CA USA, ISBN #1-893462-03-X; 619-240-3711; gm@grandmedicine.com; www.eyology.com
- What the Eye Reveals, by Denny Johnson, ©1995 in Boulder, Colorado 80308 USA; ISBN 0-917197-04-6; info@rayid.com; dennyj333@hotmail.com
- The Complete Yoga of Human Emotional-Sexual Life, by Adi Da Samraj; ©2007, the Dawn Horse Press; ISBN #978-1-57097-235-5; www.adidam.org
- The Treasure Consideration; a 5-week course on Emotional-Sexual self-understanding in the Way of Adidam based on the Wisdom Teaching of Adi Da Samraj collected by His devotees; ©1997 The Da Love-Ananda Samrajya Pty Ltd., Dawn Horse Press.

Blessings!



GRAND MEDICINE
Training for Life

To learn more about and/or order sclerology products please go to: <http://www.joyfullivingservices.com/products.html>