

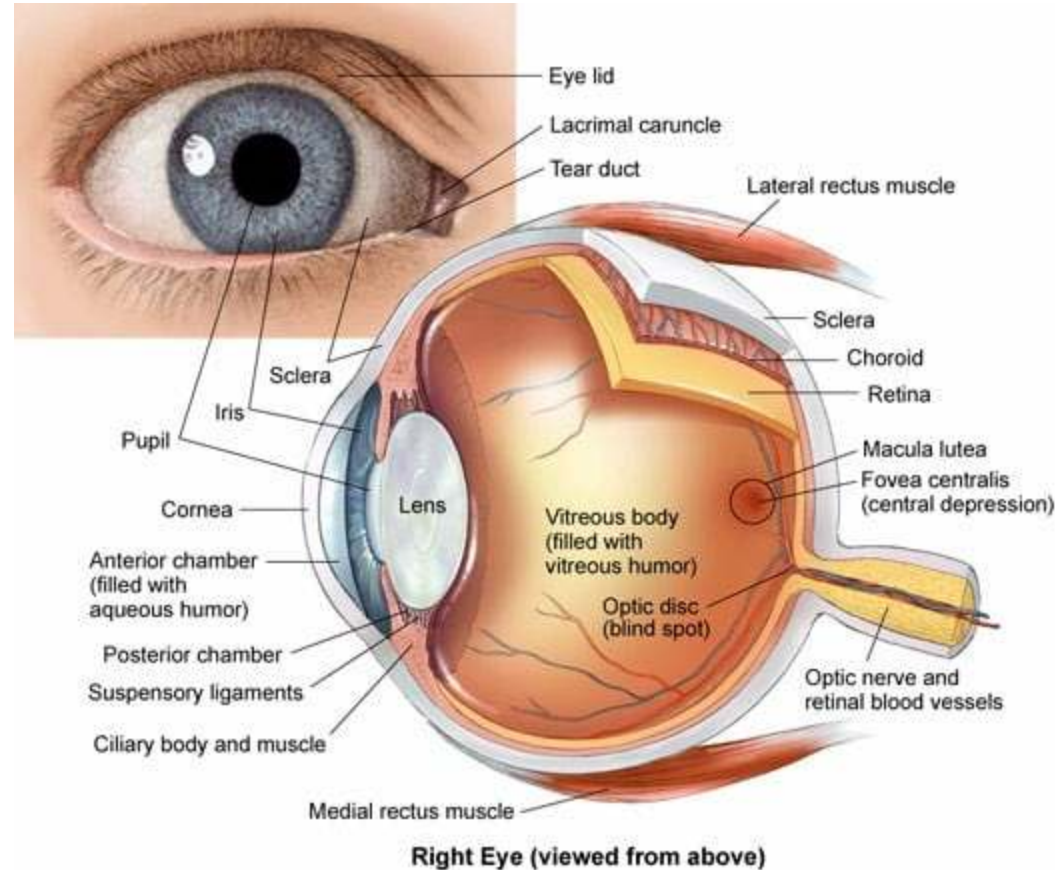


Anatomy and Physiology





Anatomy and Physiology



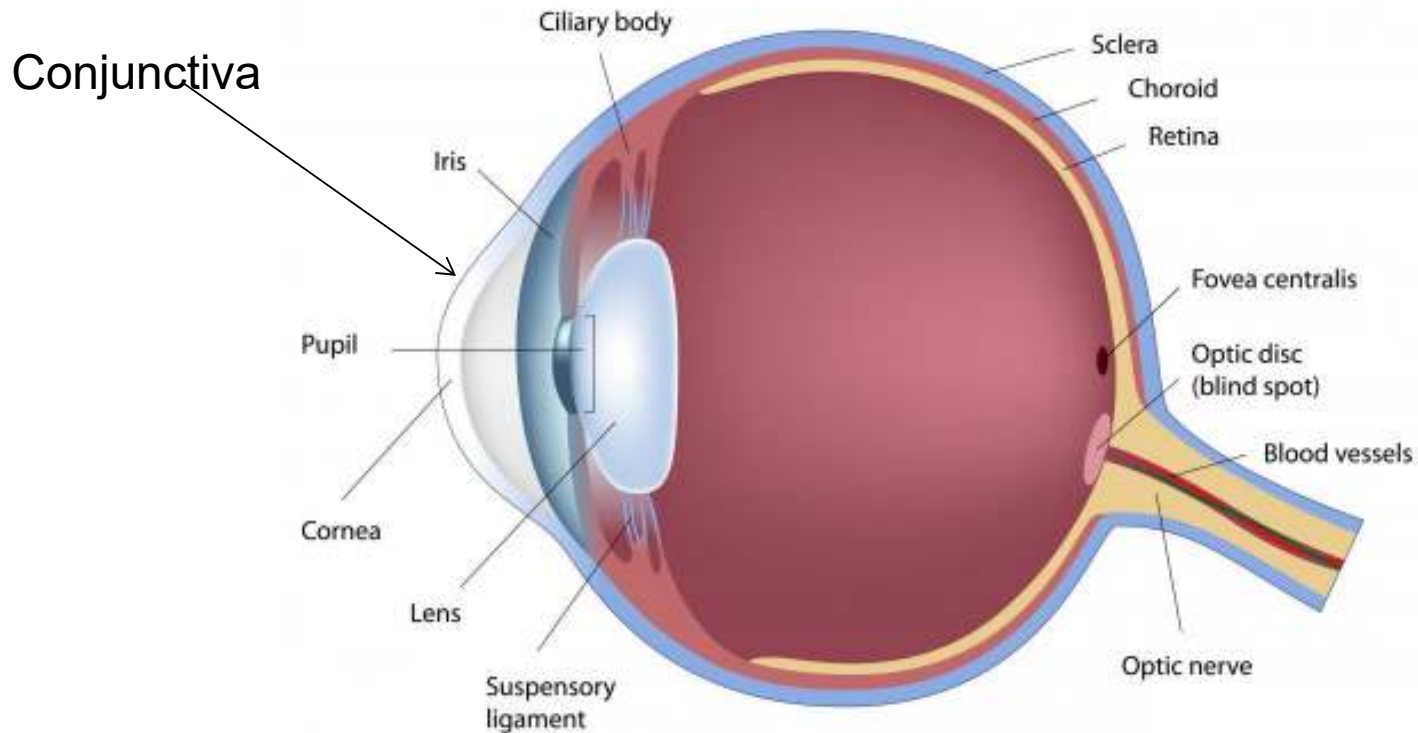
Think of the iris in layers starting from the top visible part of the iris going back through to the farthest back layer.



Anatomy and Physiology

3 Layers of the Eye

Human Eye Anatomy

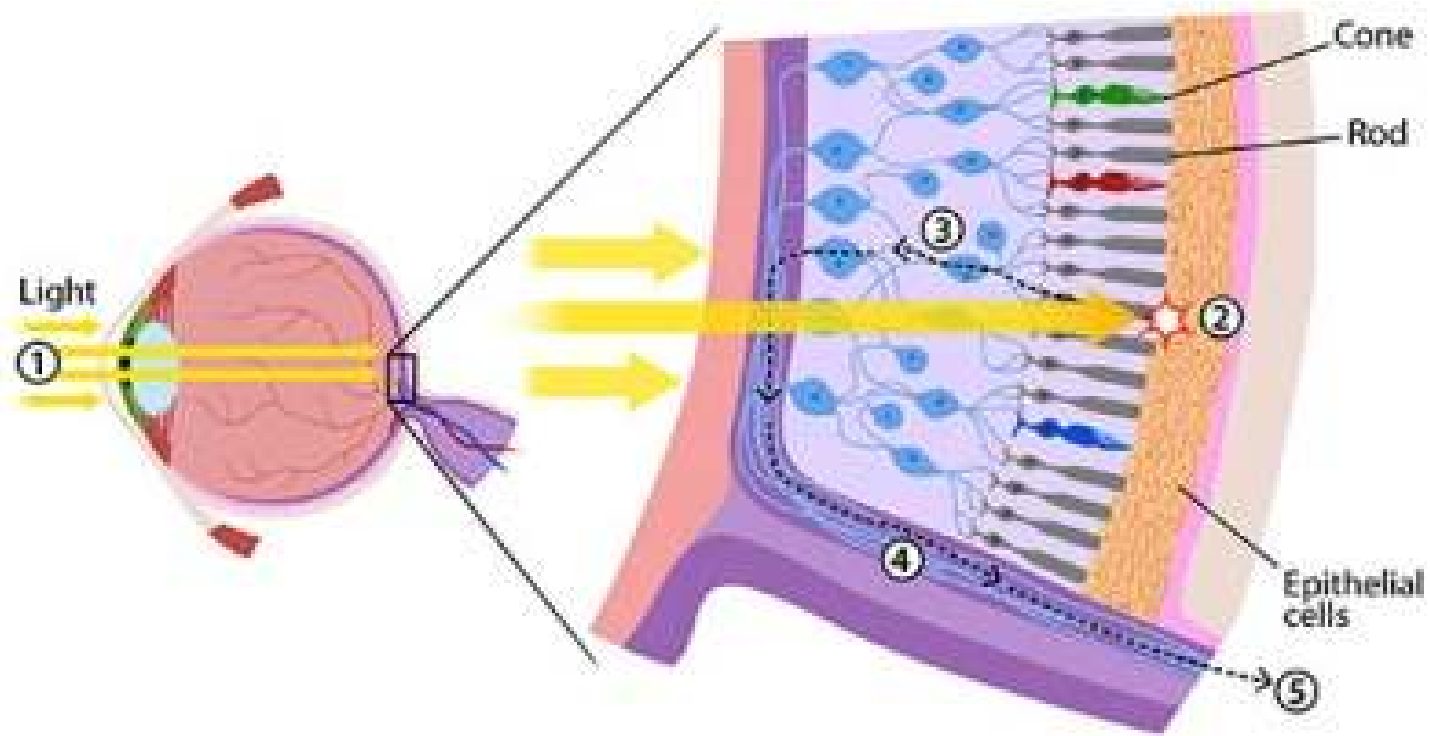


Think of the iris in layers starting from the top visible part of the iris going back through to the farthest back layer.



Anatomy and Physiology

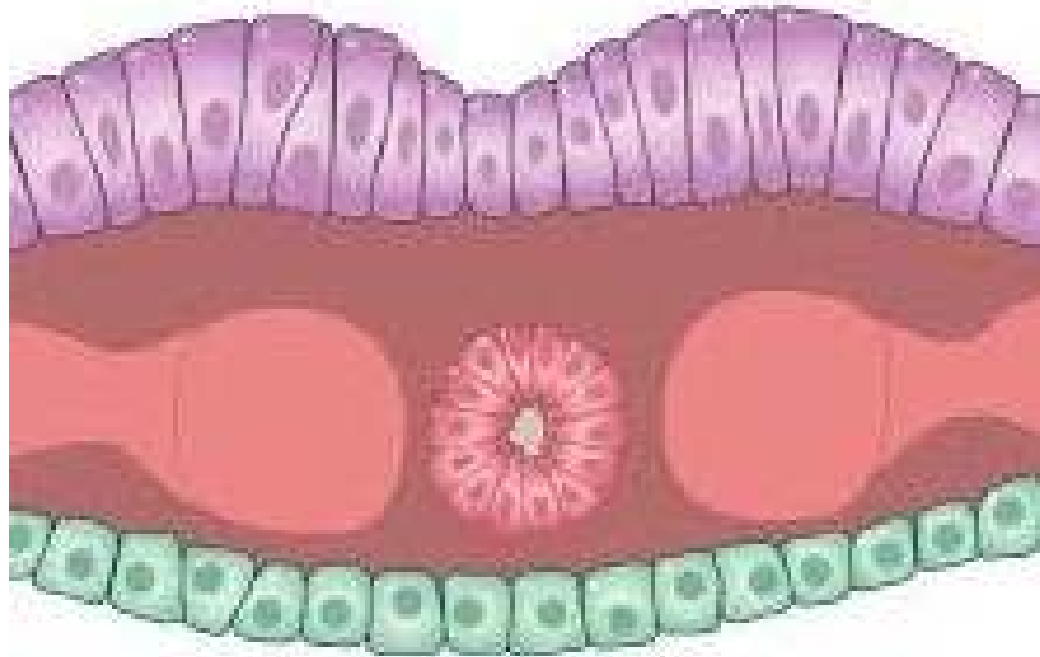
Rods & Cones





Anatomy and Physiology

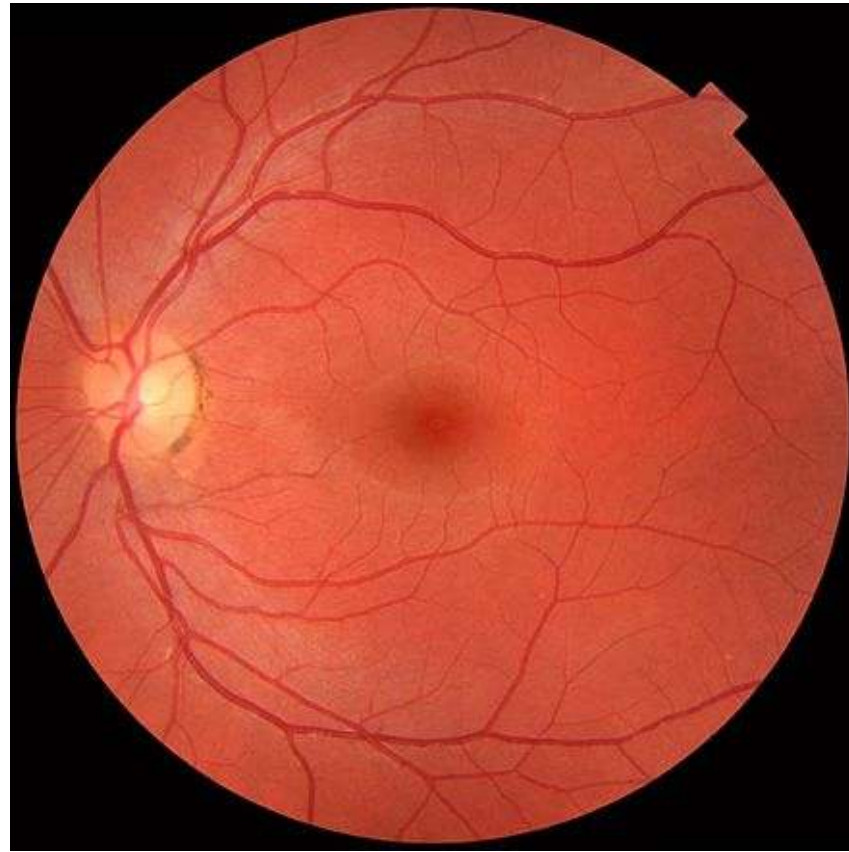
Neuroectoderm





Anatomy and Physiology

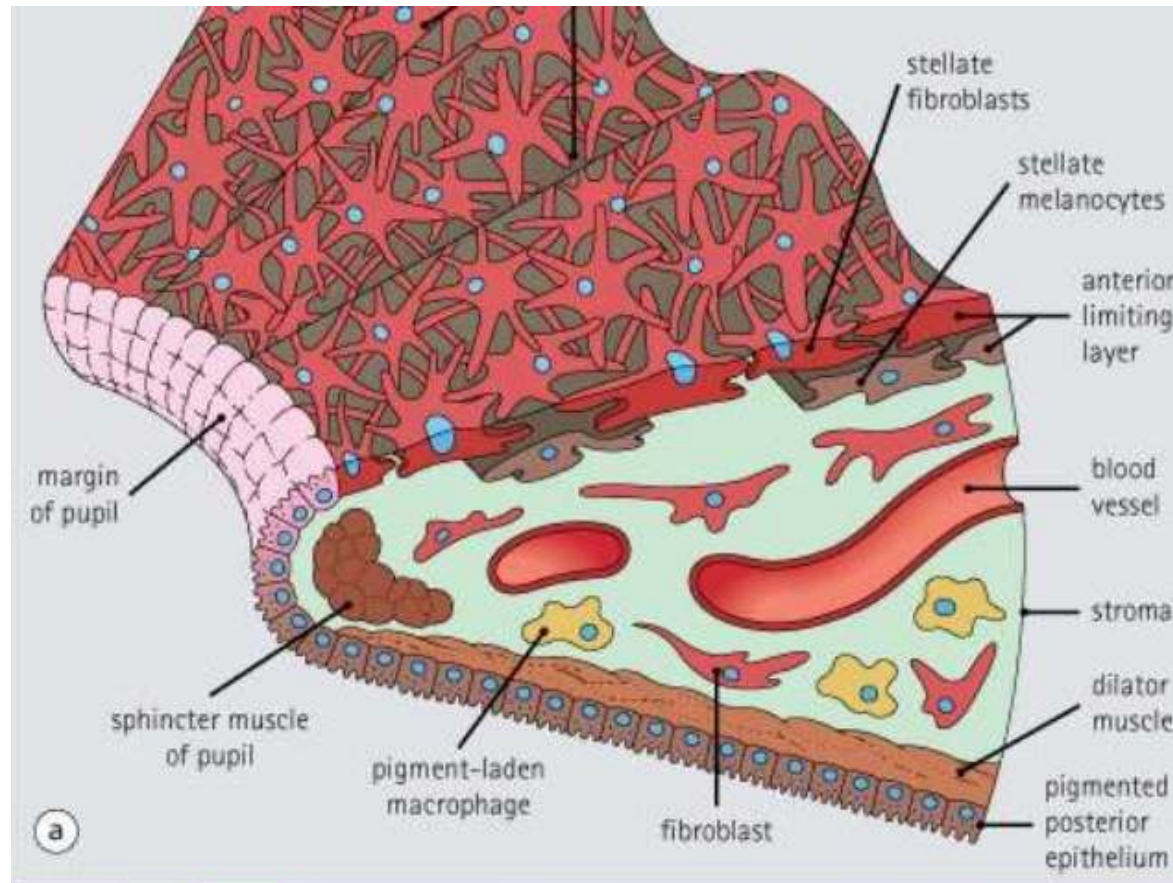
Optic Nerve





Anatomy and Physiology

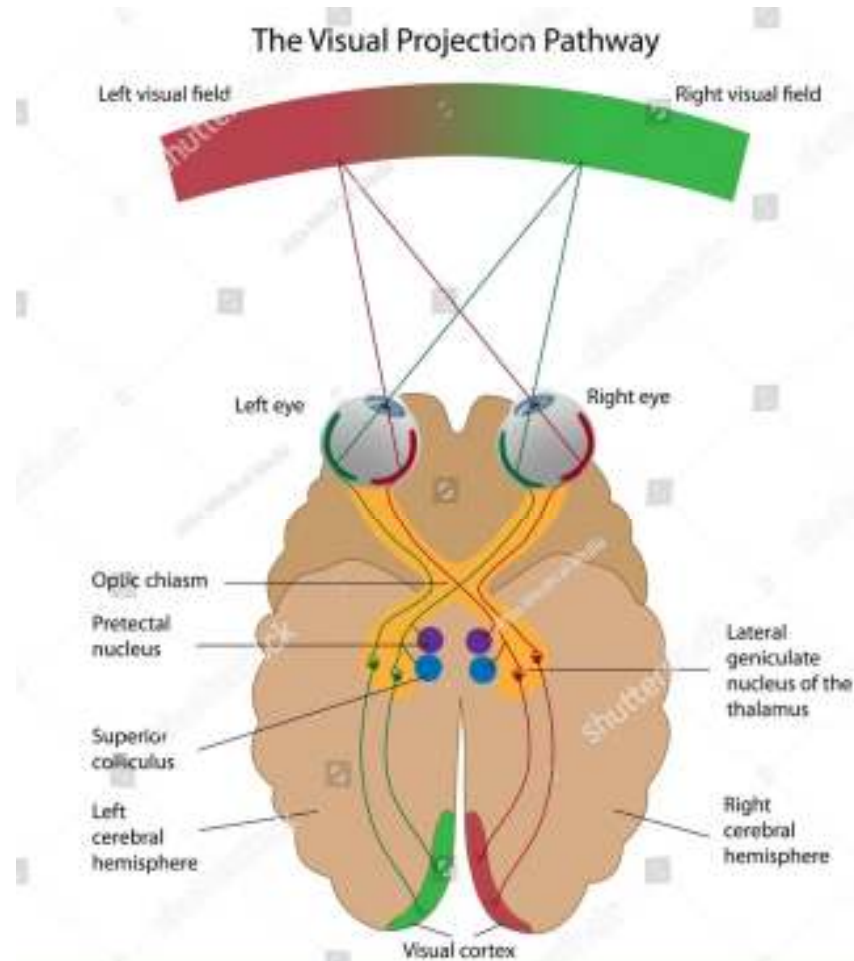
4 Layers of the Iris





Anatomy and Physiology

Optic Chiasm



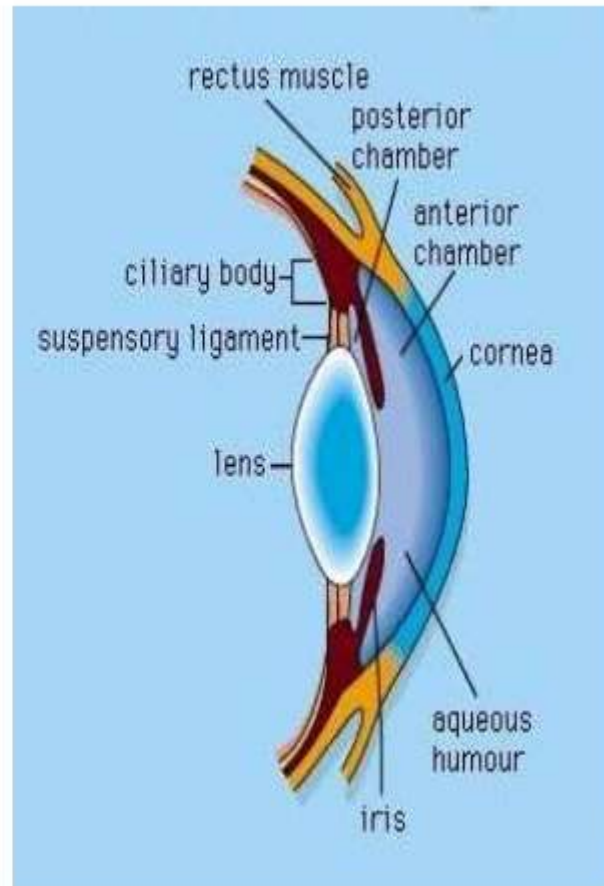


Anatomy and Physiology

Anterior Endothelium

ANTERIOR CHAMBER:

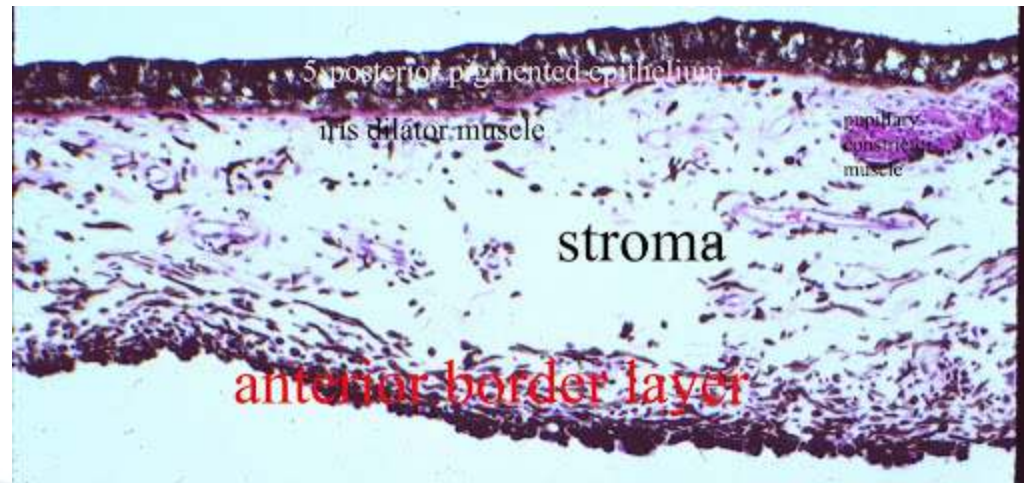
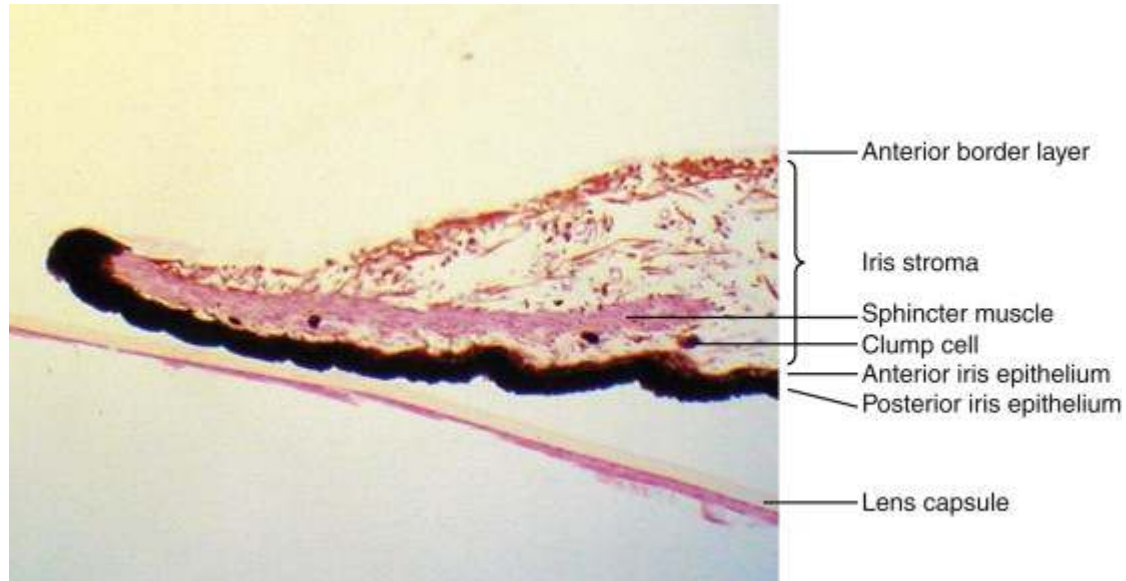
- ❖ Anterior chamber is an angular space.
- ❖ Anteriorly by the posterior (inner) surface of the cornea.
- ❖ posteriorly by the lens within the pupillary aperture, anterior surface of the iris and a part of ciliary body.





Anatomy and Physiology

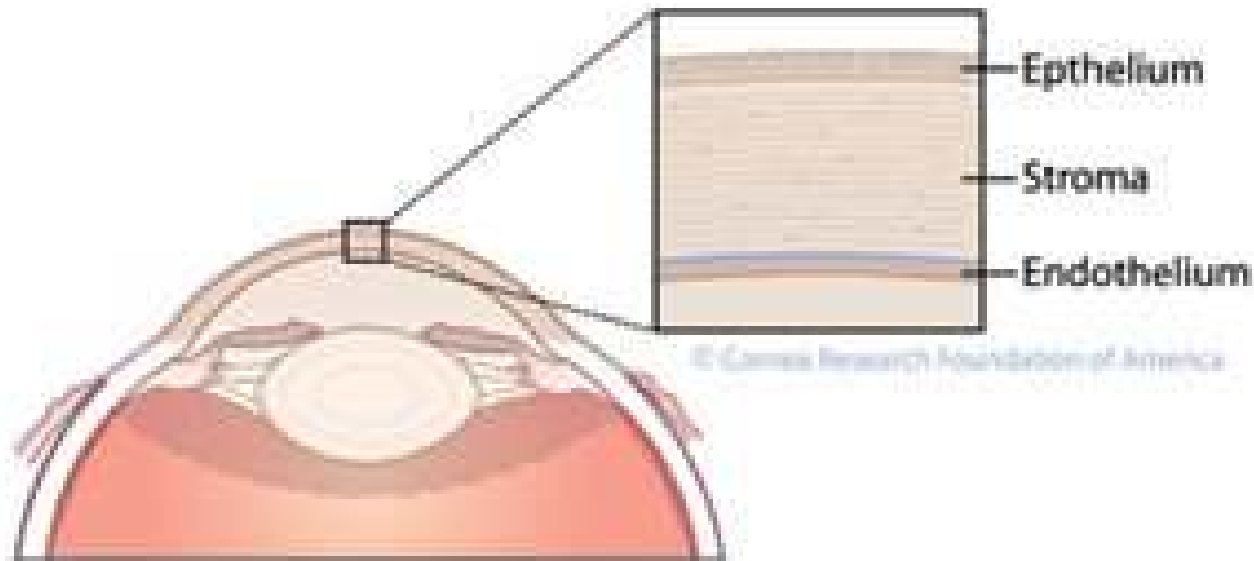
Anterior Border Layer





Anatomy and Physiology

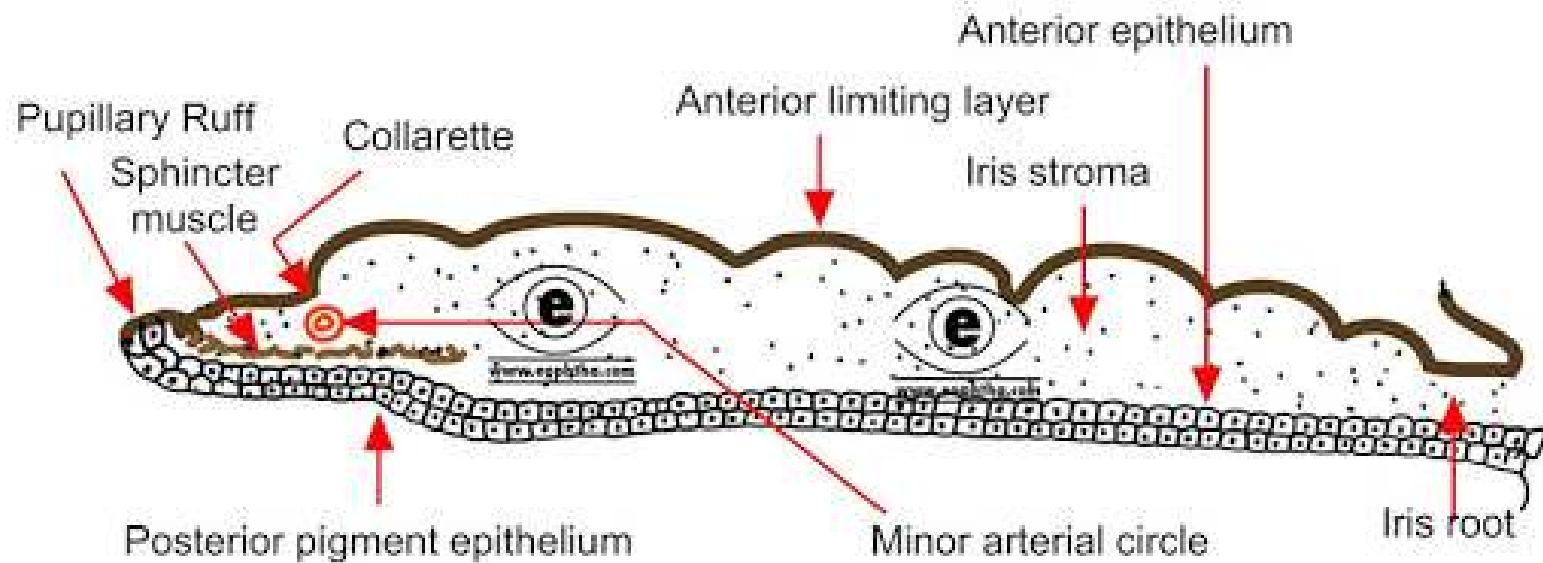
Stroma, Vascular Layer and Mesenchyme





Anatomy and Physiology

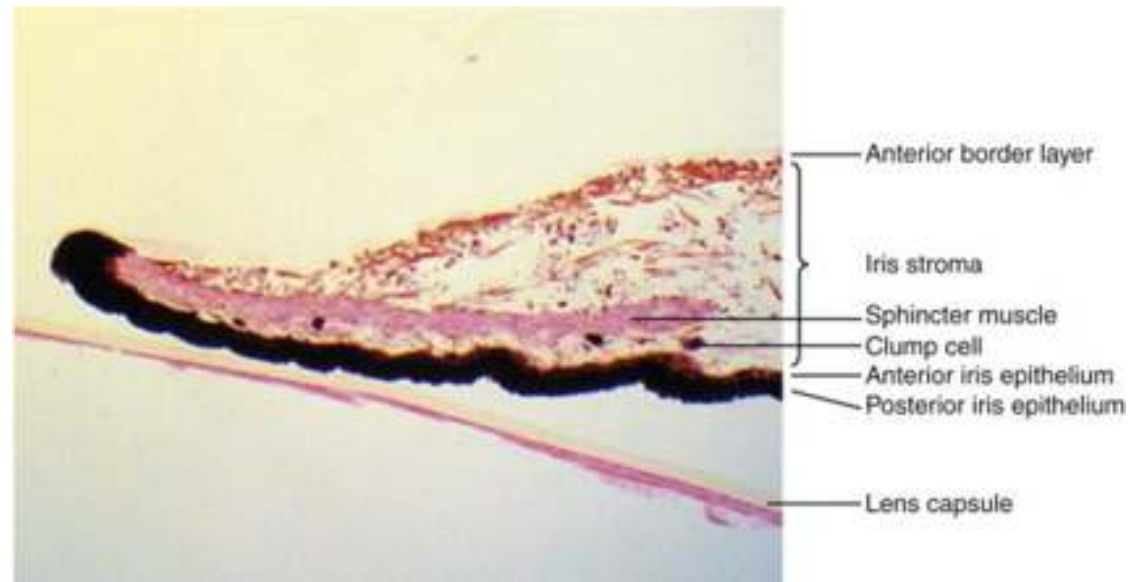
Posterior Membrane





Anatomy and Physiology

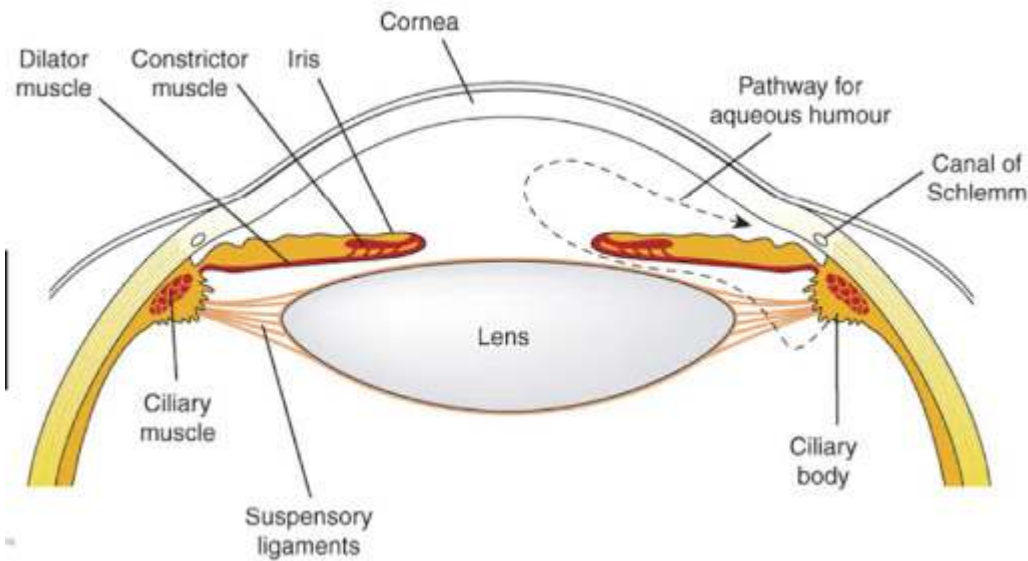
Posterior Epithelium





Anatomy and Physiology

Dilator Muscle



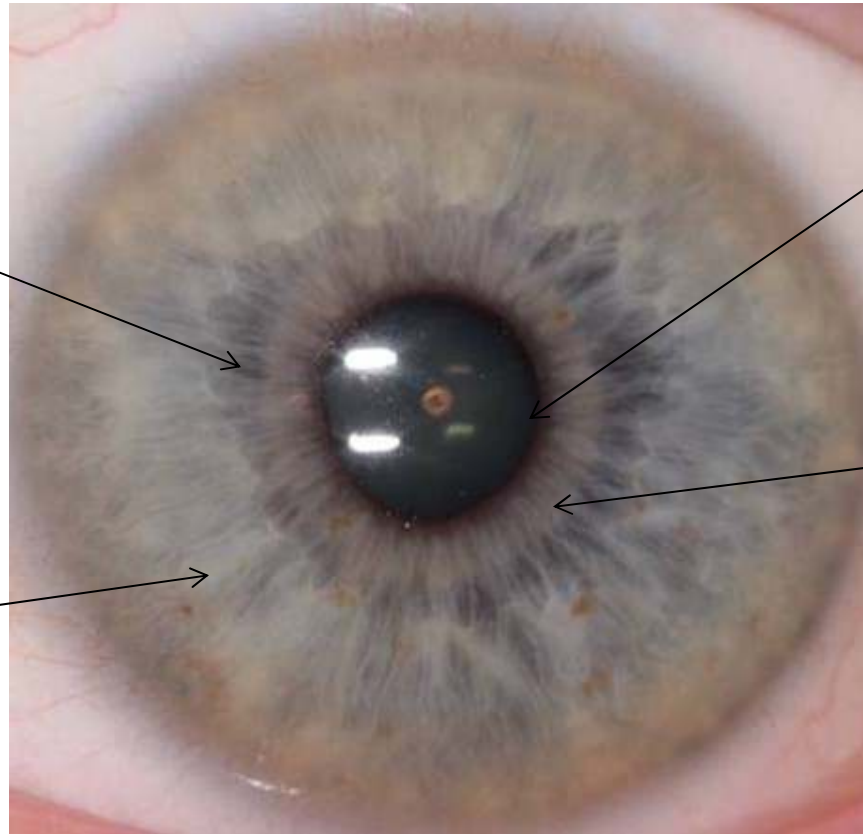


Anatomy and Physiology

Sphincter Muscle

Pupillary
Or
Nutritive
Zone

Ciliary
Zone



Pupillary
Border

Sphincter
Muscle

Collarette

