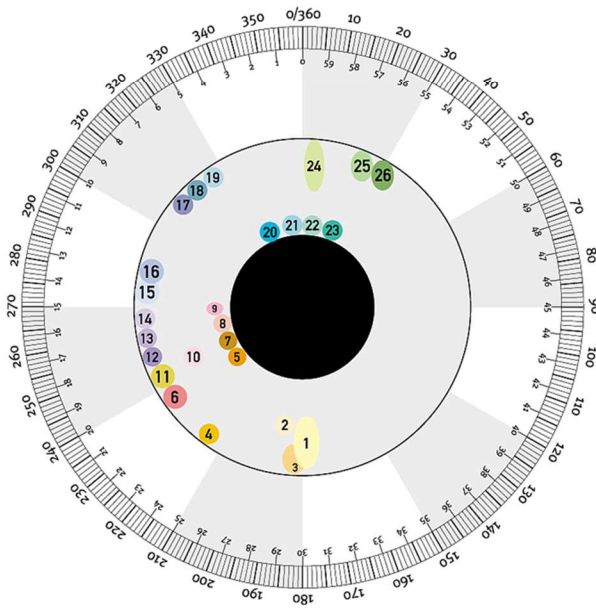
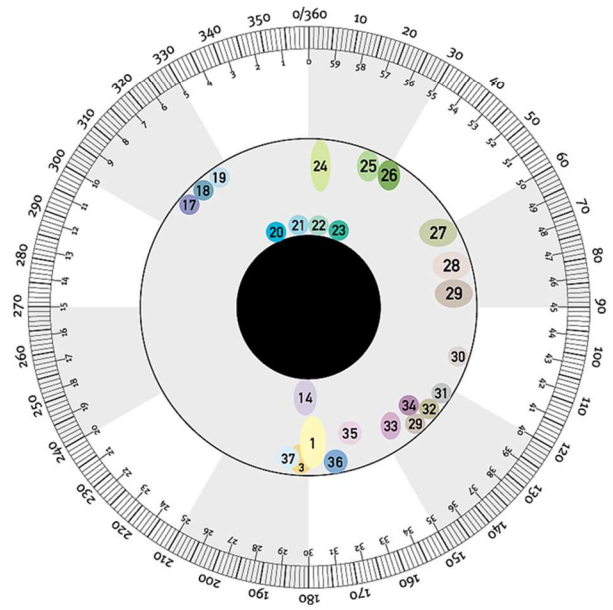


Embryogenesis chart

On the collarette the fetus is represented with its head downwards and close to the body and with its spine extending counterclockwise in the iris.

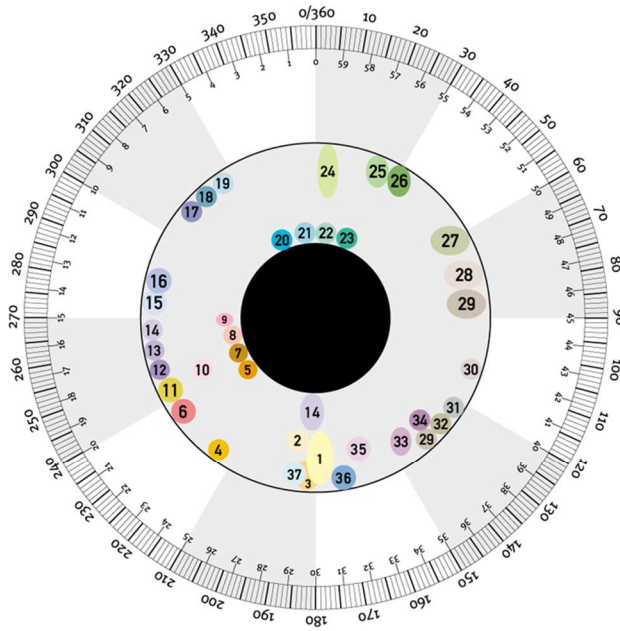


IRIDE DESTRA - RIGHT IRIS



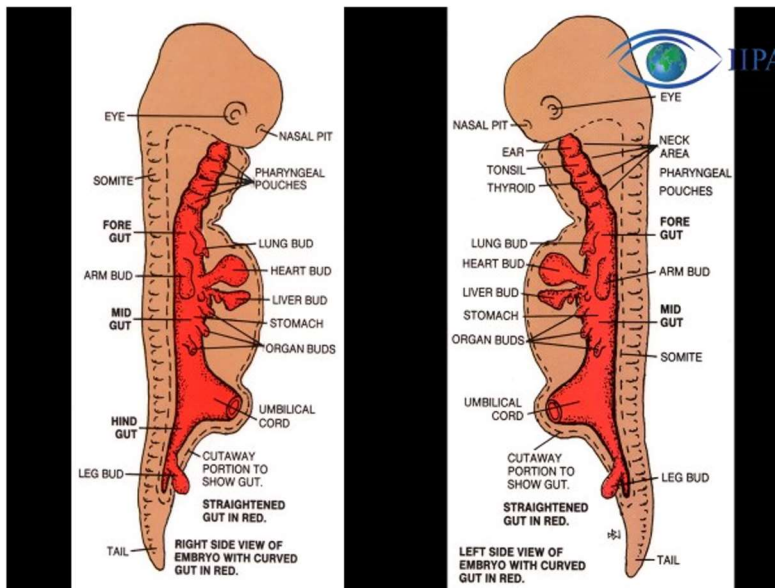
IRIDE SINISTRA - LEFT IRIS

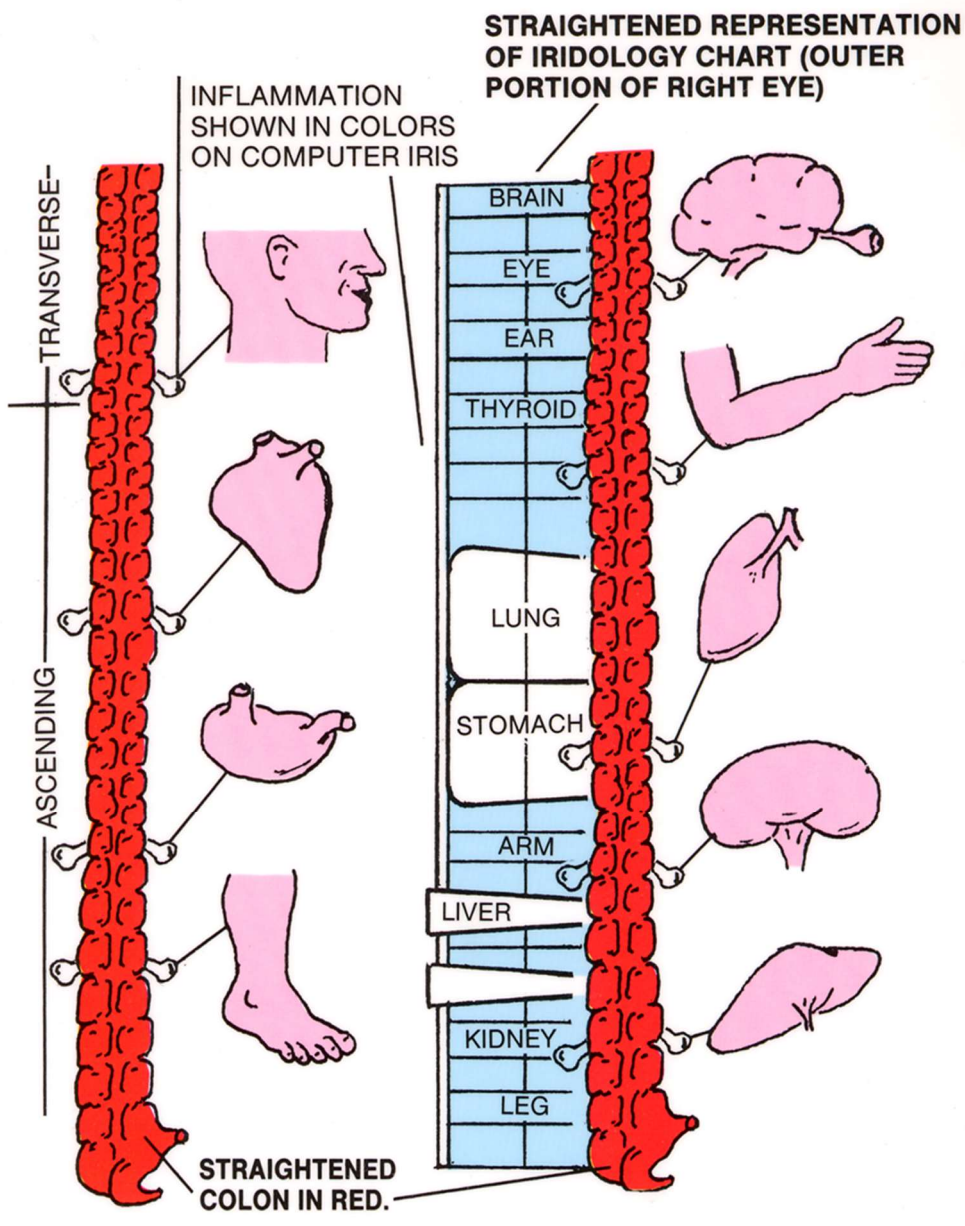
EMBRIOGENESI E IRIDOLOGIA EMBRYOGENESIS AND IRIDOLOGY



- | | |
|--------------------------------|--------------------------------------|
| 1. CEFALEA - HEADACHE | 21. ESOFAGO - OESOPHAGUS |
| 2. EPIFISI - PINEAL GLAND | 22. BRONCO - BRONCHUS |
| 3. VERMINOSI - WORMS | 23. GOLA - THROAT |
| 4. FEBBRE - FEVER | 24. EPILESSIA - EPYLEPSIS |
| 5. ORECCHIO - EAR | 25. PILORO - PYLORUS |
| 6. VERTIGINI - VERTIGO | 26. STOMACO - STOMACH |
| 7. TONSILLE - TONSILS | 27. PANCREAS - PANCREAS |
| 8. OCCHIO - EYE | 28. SURRENE - ADRENAL |
| 9. ADENOIDE - ADENOID | 29. RENE - KIDNEY |
| 10. LINGUA - TONGUE | 30. ANCA - HIP |
| 11. NASO - NOSE | 31. CERVELLO - BRAIN |
| 12. SENI PARANASALI - SINUS | 32. TESTICOLI, OVAIO - TESTES, OVARY |
| 13. ASMA - ASTHMA | 33. VESCICA - BLADDER |
| 14. MAMMELLA - BREAST | 34. PROSTATA - PROSTATA |
| 15. TIROIDE - THYROID | 35. ARTI INFERIORI - LEGS |
| 16. LARINGE - LARYNX | 36. GLICEMIA - GLYCAEMIA |
| 17. FEGATO - LIVER | 37. UTERO - UTERUS |
| 18. CISTIFELLEA - GALL BLADDER | |
| 19. CUORE - HEART | |
| 20. TRACHEA - TRACHEA | |

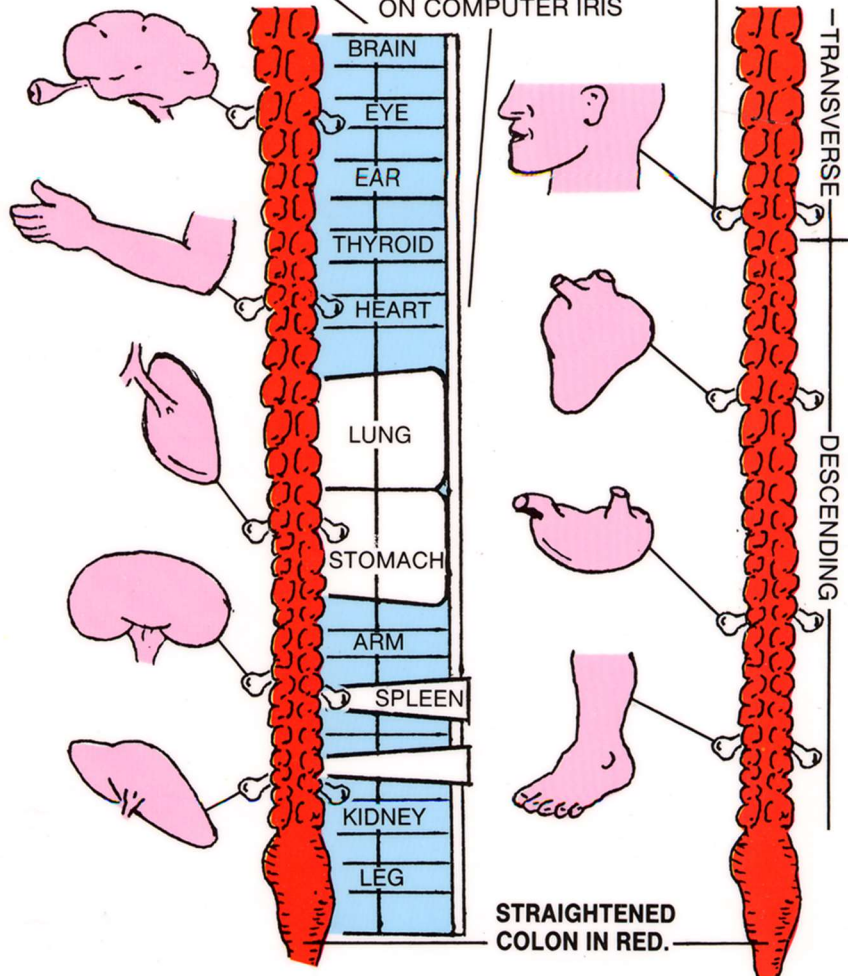
Copyright 2001 Dr. Daniele Lo Rito





**STRAIGHTENED REPRESENTATION
OF IRIDOLOGY CHART (OUTER
PORTION OF LEFT EYE)**

INFLAMMATION
SHOWN IN COLORS
ON COMPUTER IRIS





EMBRYOGENESIS (signs)

- **LACUNAE indicates potential for:**
 - structure laxity to organs
 - removal of cellular contact = less cellular strength
 - reduced communication of cells
 - functional fatigue - less energy



EMBRYOGENESIS (signs)

- **PIGMENT:**
 - compacted cellularity - message becomes stagnated to other cells
 - pigments can be topo labile or topo stabile



EMBRYOGENESIS (signs)

- **LACUNAE**
- **PIGMENT**
- **DEFECT**
- **RADIAL**
- **TRANSVERSAL**
- **STEP LACUNAE**
- **CRYPT**



EMBRYOGENESIS (signs)

- **PIGMENT:**
 - compacted cellularity - message becomes stagnated to other cells
 - pigments can be topo labile or topo stabile