

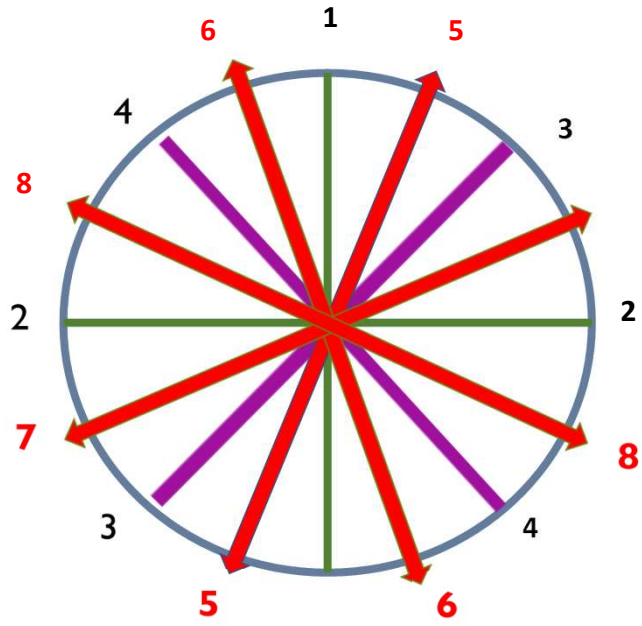
Based on the iris types in RAYID, what is the personality type of this iris?

1. Shaker-Jewel
2. Stream-Jewel
3. Shaker-Flower
4. Flower

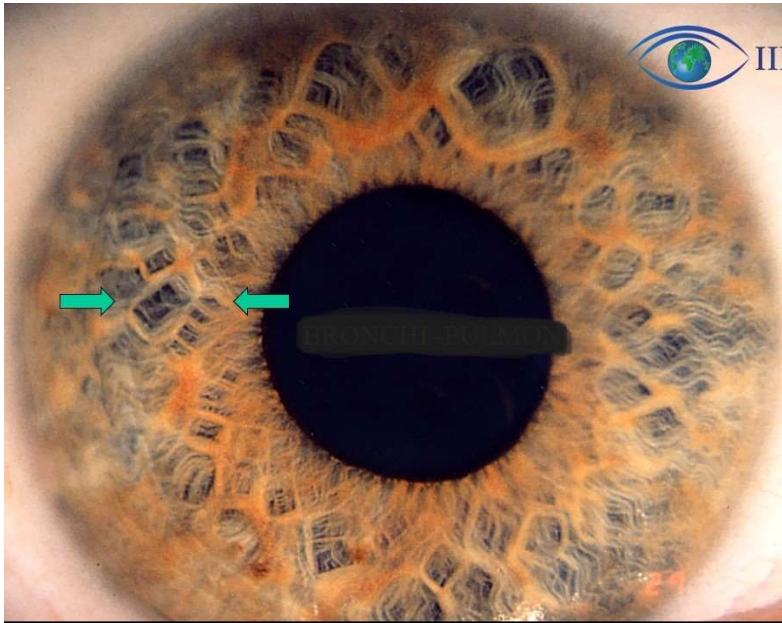
- **Shaker (driven) + tight fibers, lacuna, and pigment + Jewel (verbal - pigments) =Shaker Jewel (more jewel than lacuna)**
- **Stream (mental) straight fibers + Jewel (verbal) pigments = Stream Jewel**
- **Shaker (driven-lacuna, pigment, straight fibers) + Flower (emotion-lacuna) = Shaker Flower (more lacuna than pigment)**
- **Flower type- lacuna with no pigment present.**

Think of Opposites Attract.

Which number is the Disharmony Line?



#2:

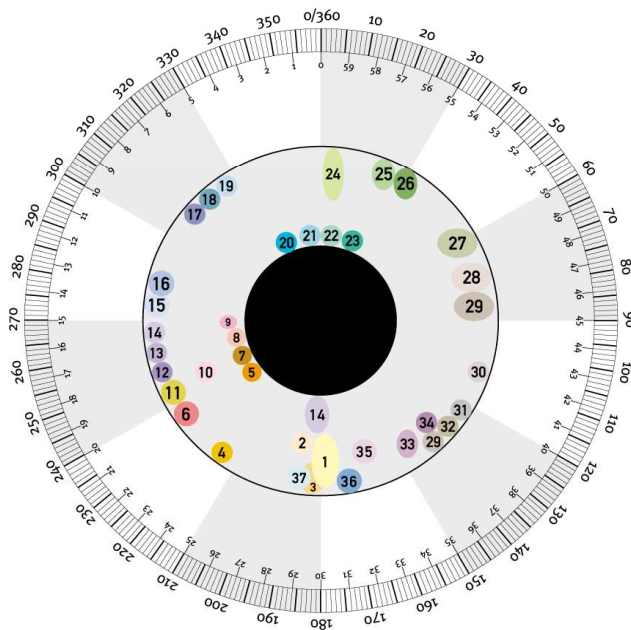


Look at the green arrows.

When thinking about Embryology in relation to the iris, what organ would possibly be affected?

1. Neck
2. Eye
3. Tonsils
4. Bronchus

Bronchus



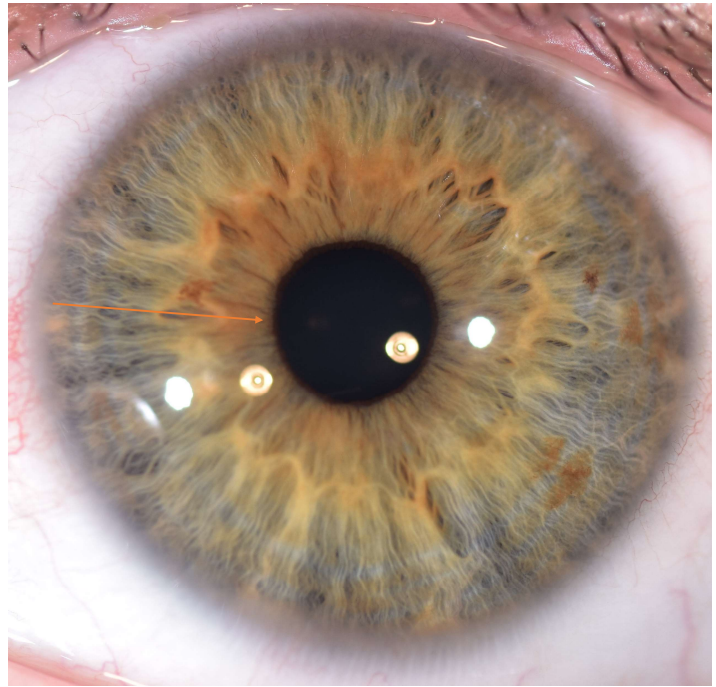
EMBRIOGENESI E IRIDOLOGIA EMBRYOGENESIS AND IRIDOLOGY

- | | |
|--------------------------------|--------------------------------------|
| 1. CEFALEA - HEADACHE | 21. ESOFAGO - OESOPHAGUS |
| 2. EPIFISI - PINEAL GLAND | 22. BRONCO - BRONCHUS |
| 3. VERMINOSI - WORMS | 23. GOLA - THROAT |
| 4. FEBBRE - FEVER | 24. EPILESSIA - EPILEPSIS |
| 5. ORECCHIO - EAR | 25. PIORO - PYLORUS |
| 6. VERTIGINI - VERTIGO | 26. STOMACO - STOMACH |
| 7. TONSILLE - TONSILS | 27. PANCREAS - PANCREAS |
| 8. OCCHIO - EYE | 28. SURRENE - ADRENAL |
| 9. ADENOIDE - ADENOID | 29. RENE - KIDNEY |
| 10. LINGUA - TONGUE | 30. ANCA - HIP |
| 11. NASO - NOSE | 31. CERVELLO - BRAIN |
| 12. SENI PARANASALI - SINUS | 32. TESTICOLI, OVAIO - TESTES, OVARY |
| 13. ASMA - ASTHMA | 33. VESCICA - BLADDER |
| 14. MAMMELLA - BREAST | 34. PROSTATA - PROSTATA |
| 15. TIROIDE - THYROID | 35. ARTI INFERIORI - LEGS |
| 16. LARINGE - LARYNX | 36. GLICEMIA - GLYCAEMIA |
| 17. FEGATO - LIVER | 37. UTERO - UTERUS |
| 18. CISTIFELLEA - GALL BLADDER | |
| 19. CUORE - HEART | |
| 20. TRACHEA - TRACHEA | |

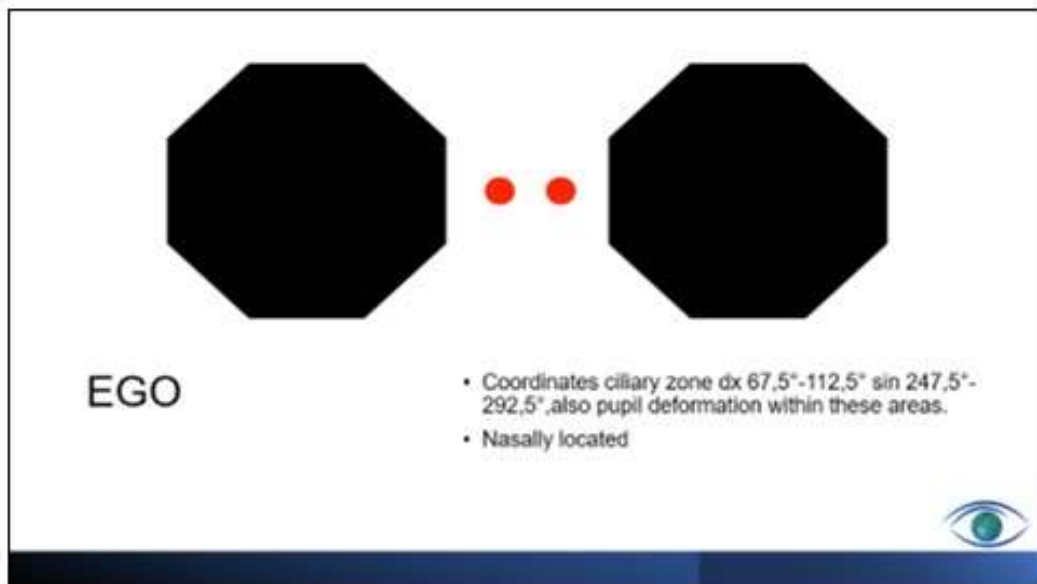
Think about
Multidimensional
Iridology.

When looking at the
pupil flatness, what
area do you notice?

1. Religion
2. Pleasure
3. EGO
4. Pleasure



EGO





Which syndrome does this person most closely match?

1. Roemheld
2. Cardio Renal
3. Cardio Abdominal
4. Roemheld and Cardio Abdominal

Roemheld: This sign can be seen in both eyes, laterally. Lateral collarette appears “ballooned” and displaced. Named after Ludwig Roemheld, who first described this sign as a gastro-cardiac complex. Flatulence and bowel distention due to excessive gas production of the upper abdomen, transverse, and colon and splenic flexure.

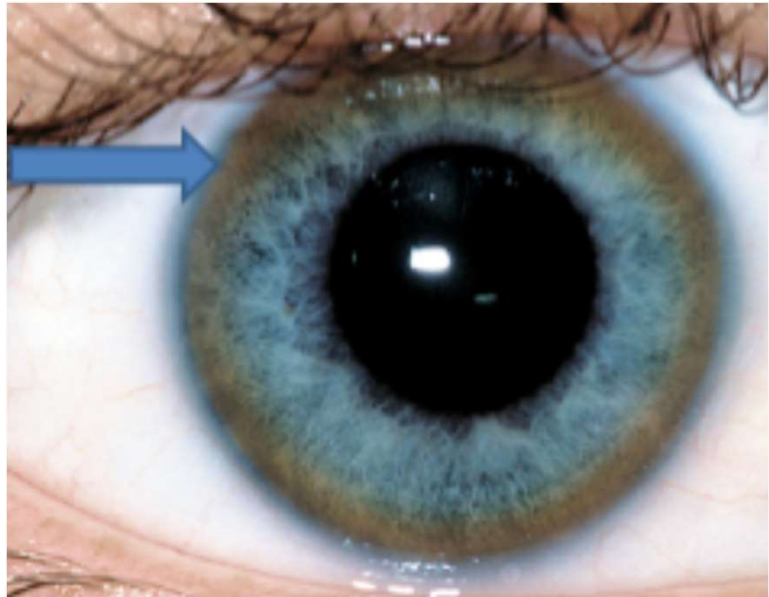
Cardio Renal: Large lacuna or honeycomb crypts in the heart and kidney region.

Cardio Abdominal: Large lacuna or honeycomb crypts in the heart reaction field and another in the splenic flexure or descending colon. The collarette is very distended in the splenic flexure or descending colon.

Roemheld and Cardio Abdominal: Two syndromes together.

This ring is called a:

1. Lipemic Diathesis
2. Ring of Perfection
3. Corneal Arcus
4. Kayser-Fleisher Ring

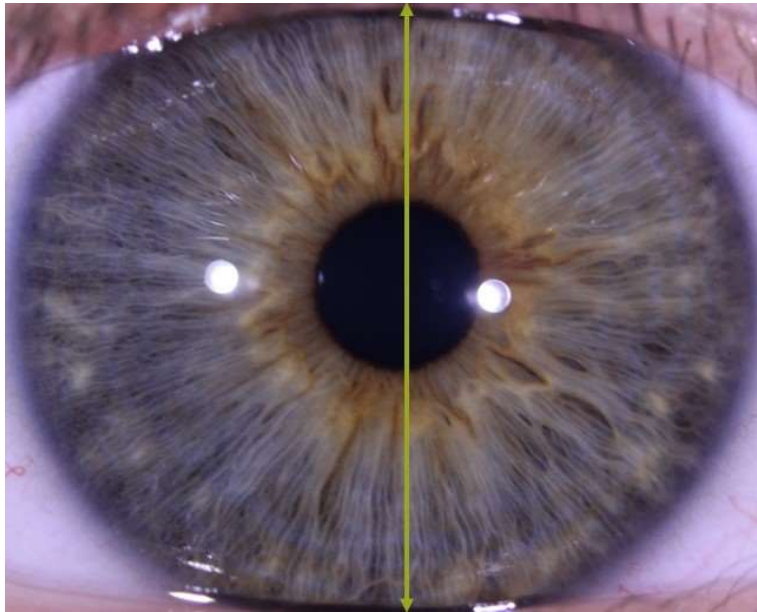


Kayser-Fleisher Ring

Wilson's Disease: Kayser- Fleischer Ring

- A genetic disorder caused by a **defect in the way the body utilizes copper in the liver.**
- The disease causes a faulty storage of copper so that it cannot be excreted properly in the bile.
- Copper accumulates in the liver causing biliary damage.
- When the liver is injured, copper leaches out into the blood stream.
- High levels of copper in the blood lead to copper deposits in the cornea.





Thinking of Opposites Attract, this line is called:

1. Line of Balance
2. Disharmony Line
3. Nose-Diaphragm Disharmony Line
4. Ear-Bladder Line

Line of Balance

A Line of Balance is dominant within the iris, if there are signs in both OPPOSITE DIRECTIONS.

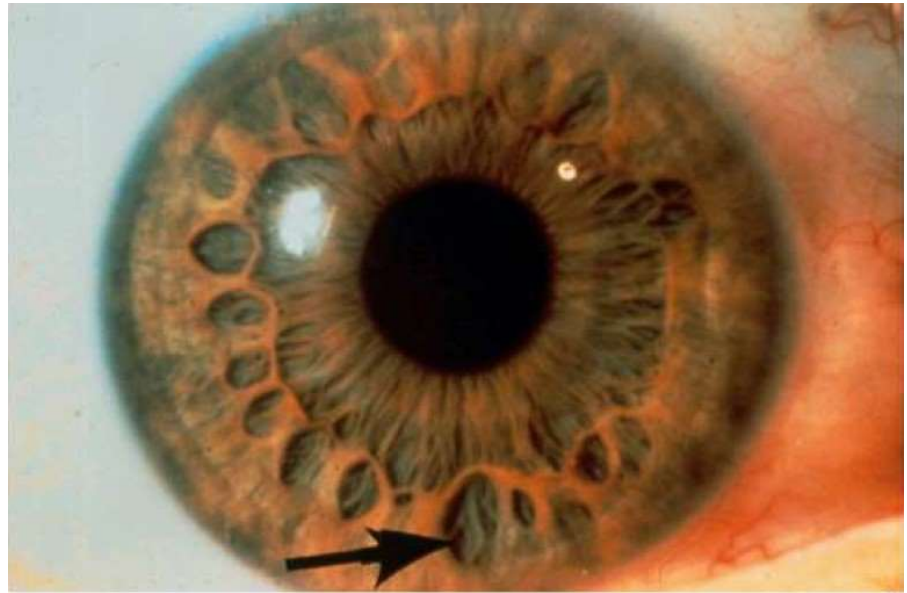
- Radials
- Pigments
- Tophi
- Rarefaction
- Reflexives
- Lacuna
- Different color shading
- Broken collarette

Also called the **Stress Line. Equilibrium line** or in medical words, **HPA** (Hypothalamus/pituitary axis)

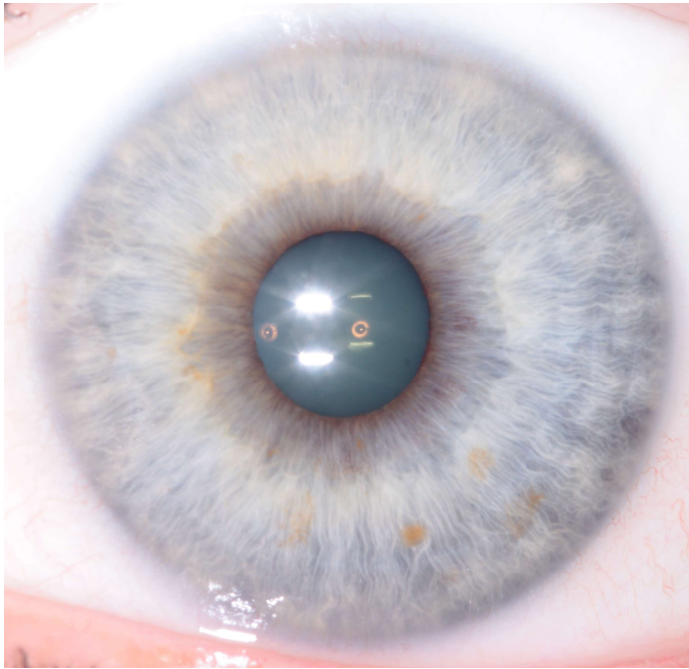
It connects the brain, feet adrenals, hypothalamus, (in some maps the pituitary gland) During a stressful situation, the hypothalamus gland releases a hormone which triggers the pituitary glands production of ACTH, which then prompts the adrenals to make cortisol. Cortisol releases sugar in the bloodstream and prepares the body for the “fight or flight” response. If the glands are in constant overdrive, the body gets cortisol resistant and chronic fatigue can become the norm. Legs stop moving.

Based on RAYID,
this iris would be a:

1. Stream-Jewel
2. Shaker-Flower
3. Flower
4. Shaker-Jewel



- Stream (mental) straight fibers + Jewel (verbal) pigments = Stream Jewel
- Shaker (driven-lacuna, pigment, straight fibers) + Flower (emotion-lacuna) = Shaker Flower (more lacuna than pigment)
- **Flower type- lacuna with no pigment present.**
- Shaker (driven) + tight fibers, lacuna, and pigment + Jewel (verbal - pigments) = Shaker Jewel (more jewel than lacuna)



How would you classify this iris based on Toni Miller's Constitutional Diathesis presentation:

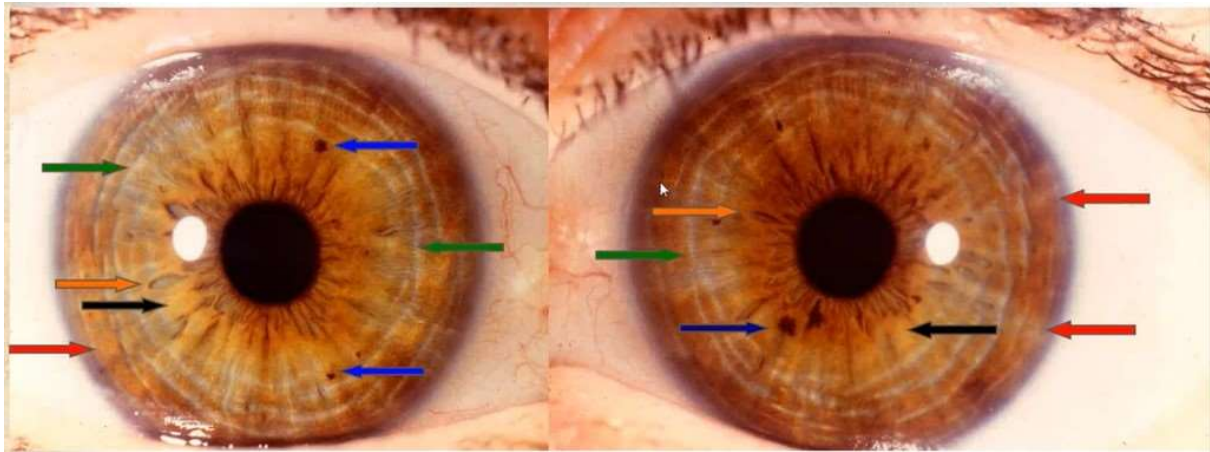
1. Hyper-Acidic
2. Febrile
3. Hydro-Lymphatic
4. Kidney-Lymphatic

Hyper-Acidic: Icy blue fibers look merged due to heavy white plaque – looks very very white. Fibers in the humoral zone are white, as are fibers in the ciliary body. White humoral zone. The degree of loading (white thickness) determines rheumatic disposition and collagen diseases. Scurf rim may be seen. Extreme lightening of fibers. Known as overacid subtype by IIPA.

Febrile: Greenish/yellow hues and tones characterize them. They may also appear grey or slightly greenish. Steal gray or greenish hue. The febrile is a subtype of the hyper acid diathesis. Thickened fibers meld together. Heavy plaque loading. Increased rheumatic issues – Inflammation, pain and tenderness, stiffness in the muscles and joints. This is an acquired diathesis. We know this as the Uric Acid Subtype with IIPA.

Hydro-Lymphatic (Hydrogenic): It may be seen in lymphatic or mixed irises. It can be seen in infancy within 3 months. You are either born with it or not. Tophi will not accumulate over time. 25% of the population have tophi. Toxic loading of the lymph. They do not want confrontations. They can be moody and impatient. They may complain about fluid retention. Known as Hydrogenoid Subtype with IIPA.

Kidney-Lymphatic: This diathesis also appears to have greenish or yellowish hues. There will be structural signs in the kidneys. This is what makes it different from the febrile: the structural markings. Blue iris with straw yellow pigment. Yellow structural sign in the kidney RF. Appears green to the naked eye. Yellow collarette and humoral zone. Structural marks in kidneys Tophi common may be yellow. Looks like Uric Acid Subtype from IIPA.



Think about the Precancerous Signs.

This iris would be a:

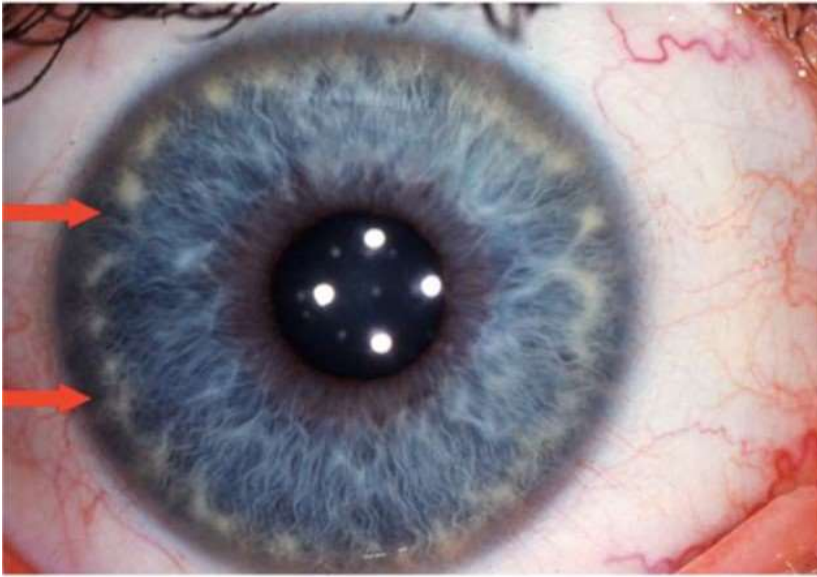
1. Psoric Constitution
2. Sycotic Constitution
3. Generali-Ackerman Constitution
4. None of the above

Psoric:

1. Blue-gray iris color (**lymphatic type**) though it may look brown due to a central heterochromia and brown pigmentations in the ciliary zone. It will always have a blue-gray background.
2. The two **pupils are often unequal in size** (anisocoria)
3. **Pigmentations** or Central heterochromia are located in the pupillary zone.
4. The fibers in **the ciliary zone are loose and /or filled with crypts**. Open or closed lacuna are on or close to the collarette, indicating organ deficiencies.
5. The ciliary zone contains several dark brown melanin pigments.

Sycotic:

1. The iris is generally **light brown** (biliary)
2. The **middle of the ciliary zone appears lighter** than the rest of the iris. The iris stroma has the appearance of a white ring due to contraction furrows (anxiety tetanic)
3. The periphery of the **pupillary zone and humoral zone region** appear milky in color, indicating poor, conditions of bodily fluids.
4. **Light colored tophi** are found in the periphery of the ciliary region.
5. There is usually a tarry **dark melanin pigment** or tarry pigments somewhere in one iris.



Think of the RAYID rings.

Which ring does this iris have?

1. Ring of Purpose
2. Ring of Harmony
3. Ring of Freedom
4. Ring of Determination

Ring of Purpose: Scuff Rim

Ring of Harmony: Lymphatic Rosary, Tophi

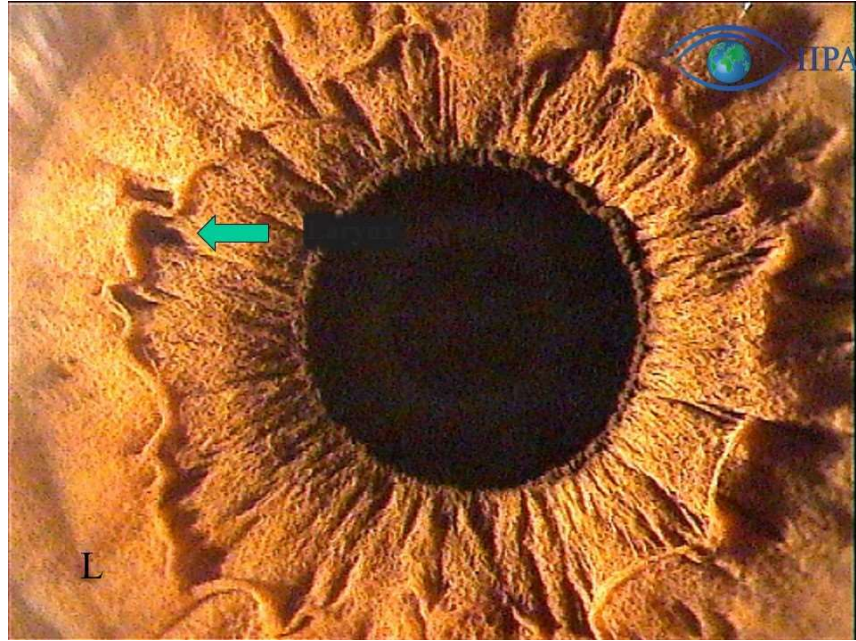
Ring of Freedom: Achievement – Contraction Furrows

Ring of Determination: Lipemic Ring

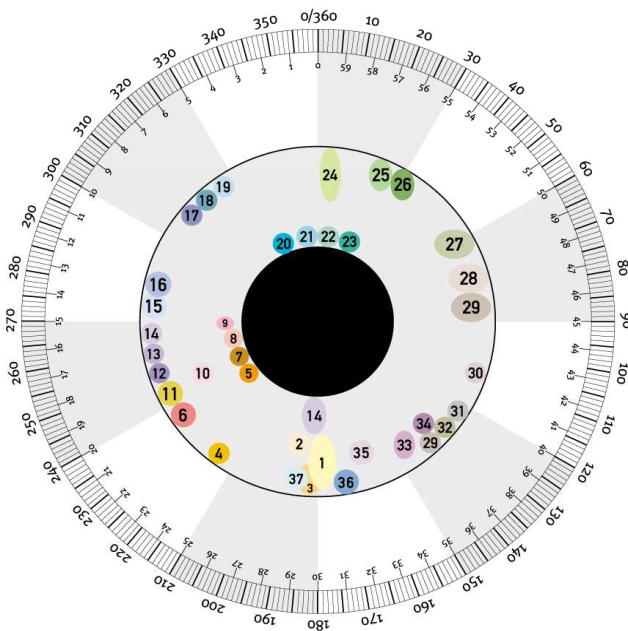
Notice the green arrow.

When you think about Embryology in relation to the iris, what part of the body could possibly be affected?

1. Adenoids
2. Larynx
3. Bladder
4. Thyroid

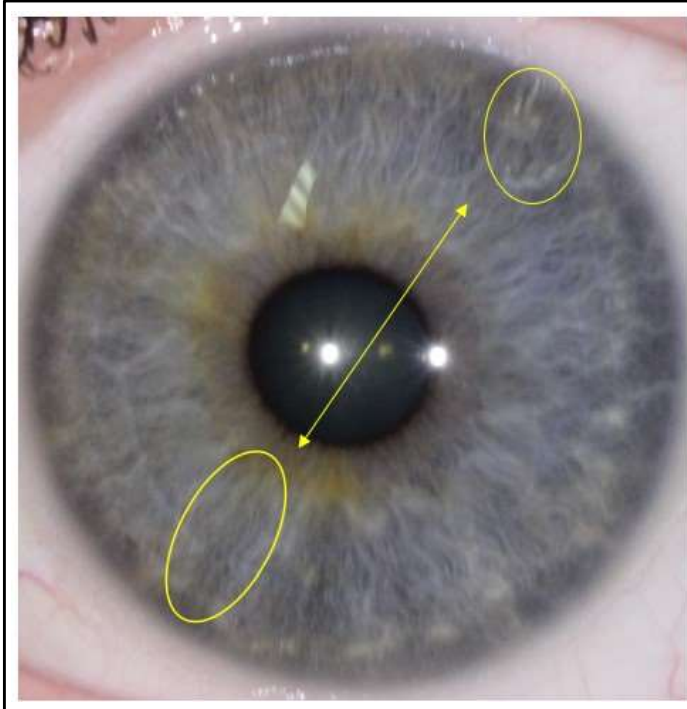


Larynx



EMBRIOGENESI E IRIDOLOGIA EMBRYOGENESIS AND IRIDOLOGY

- | | |
|--------------------------------|--------------------------------------|
| 1. CEFALEA - HEADACHE | 21. ESOFAGO - OESOPHAGUS |
| 2. EPIFISI - PINEAL GLAND | 22. BRONCO - BRONCHUS |
| 3. VERMINOSI - WORMS | 23. GOLA - THROAT |
| 4. FEBBRE - FEVER | 24. EPILESSIA - EPYLEPSIS |
| 5. ORECCHIO - EAR | 25. PILORO - PYLORUS |
| 6. VERTIGINI - VERTIGO | 26. STOMACO - STOMACH |
| 7. TONSILLE - TONSILS | 27. PANCREAS - PANCREAS |
| 8. OCCHIO - EYE | 28. SURRENE - ADRENAL |
| 9. ADENOIDE - ADENOID | 29. RENE - KIDNEY |
| 10. LINGUA - TONGUE | 30. ANCA - HIP |
| 11. NASO - NOSE | 31. CERVELLO - BRAIN |
| 12. SENI PARANASALI - SINUS | 32. TESTICOLI, OVAIO - TESTES, OVARY |
| 13. ASMA - ASTHMA | 33. VESCICA - BLADDER |
| 14. MAMMELLA - BREAST | 34. PROSTATA - PROSTATA |
| 15. TIROIDE - THYROID | 35. ARTI INFERIORI - LEGS |
| 16. LARINGE - LARYNX | 36. GLICEMIA - GLYCAEMIA |
| 17. FEGATO - LIVER | 37. UTERO - UTERUS |
| 18. CISTIFELLEA - GALL BLADDER | |
| 19. CUORE - HEART | |
| 20. TRACHEA - TRACHEA | |

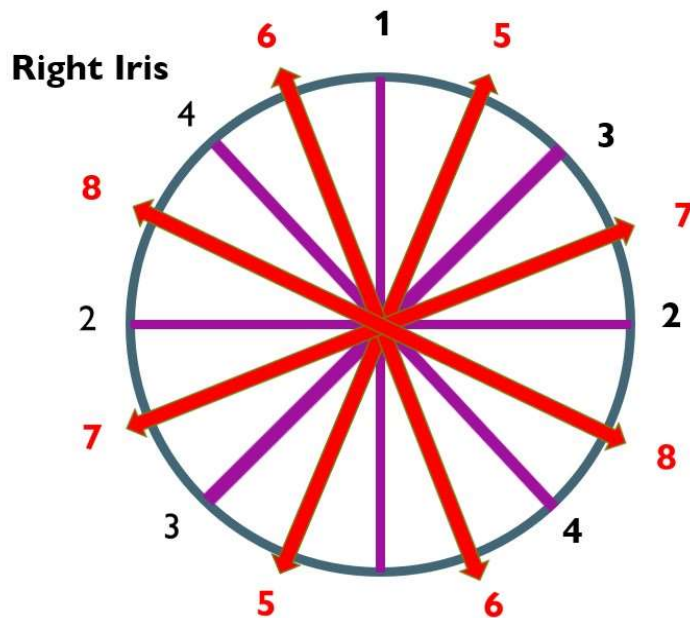


Think of Opposites Attract.

When you see the yellow line across the iris the line is the:

1. Disharmony Line
2. Ear-Bladder Line
3. Mouth-Hand Line
4. Cerebellum-Uterus Line

Ear-Bladder Line



Mrs. Madaus first divided the iris into four quadrants.

Horizontal 1-2 Purple line

Vertical 3-4 purple line

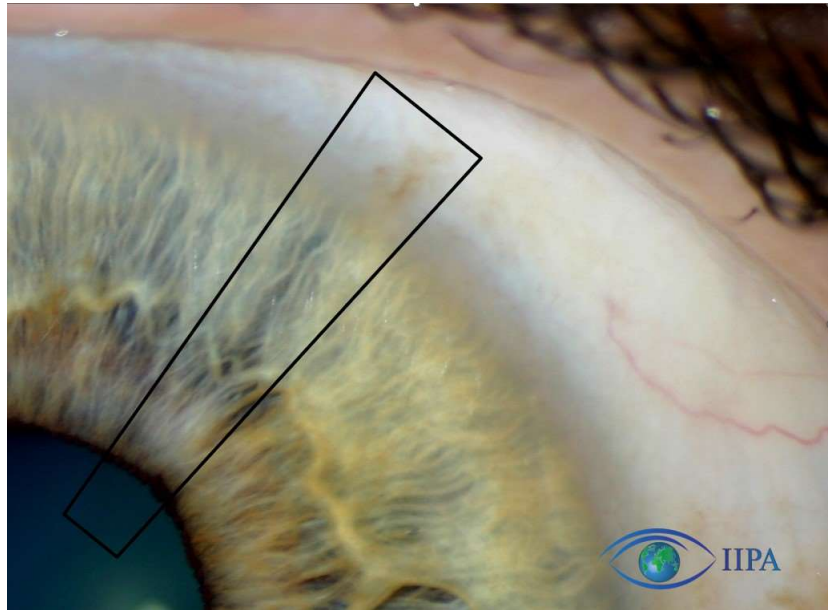
1. Line of balance, coordination or vertex-foot line.
2. Disharmony line
3. Nose-diaphragm line
4. Ear-bladder line
5. Right: cerebellum-uterus line
6. Left: cerebellum- rectum line
7. Mouth-hand line
8. Axillary cross or line of support

Think about SpaceRisk

- If we have the sign on the Limbus and in the area of the organ corresponding to the space
- If we have a sign on the Limbus and on the I.P.B.
- If we have a sign on the Limbus and embryological topography.

It's called:

1. Discordant
2. Concordant



Concordant

CONCORDANT

- If we have the sign on Limbus and in the area of the organ corresponding to the space
- If we have a sign on Limbus and on the I.P.B.
- If we have a sign on Limbus and embryological topography.

DISCORDANT

- When we only have the sign on Limbus