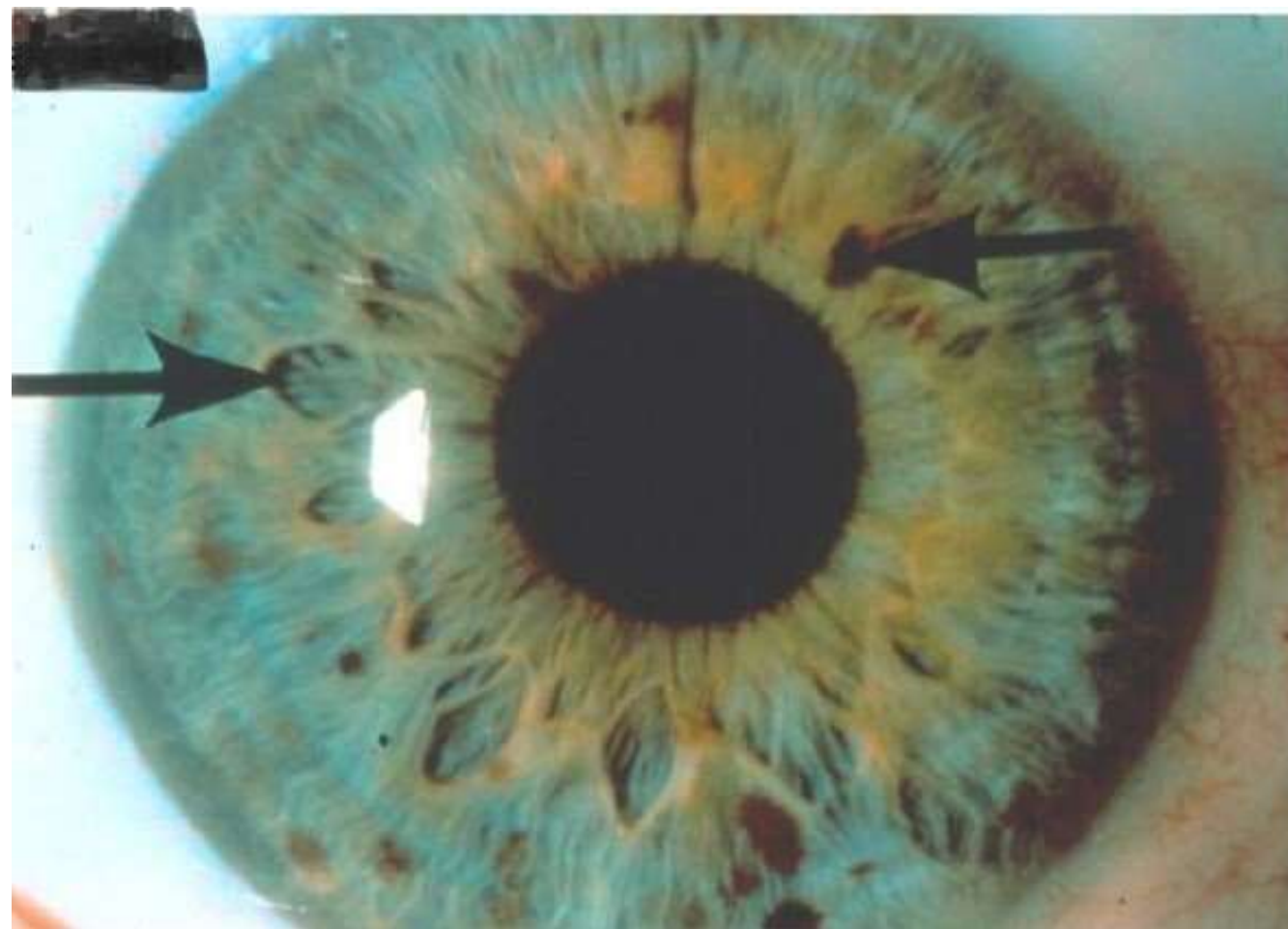


The background is a vibrant red with a fine, woven texture. A large, semi-transparent white circle is positioned on the right side of the image, serving as a backdrop for the text.

IIPA Level III

Exam Practice

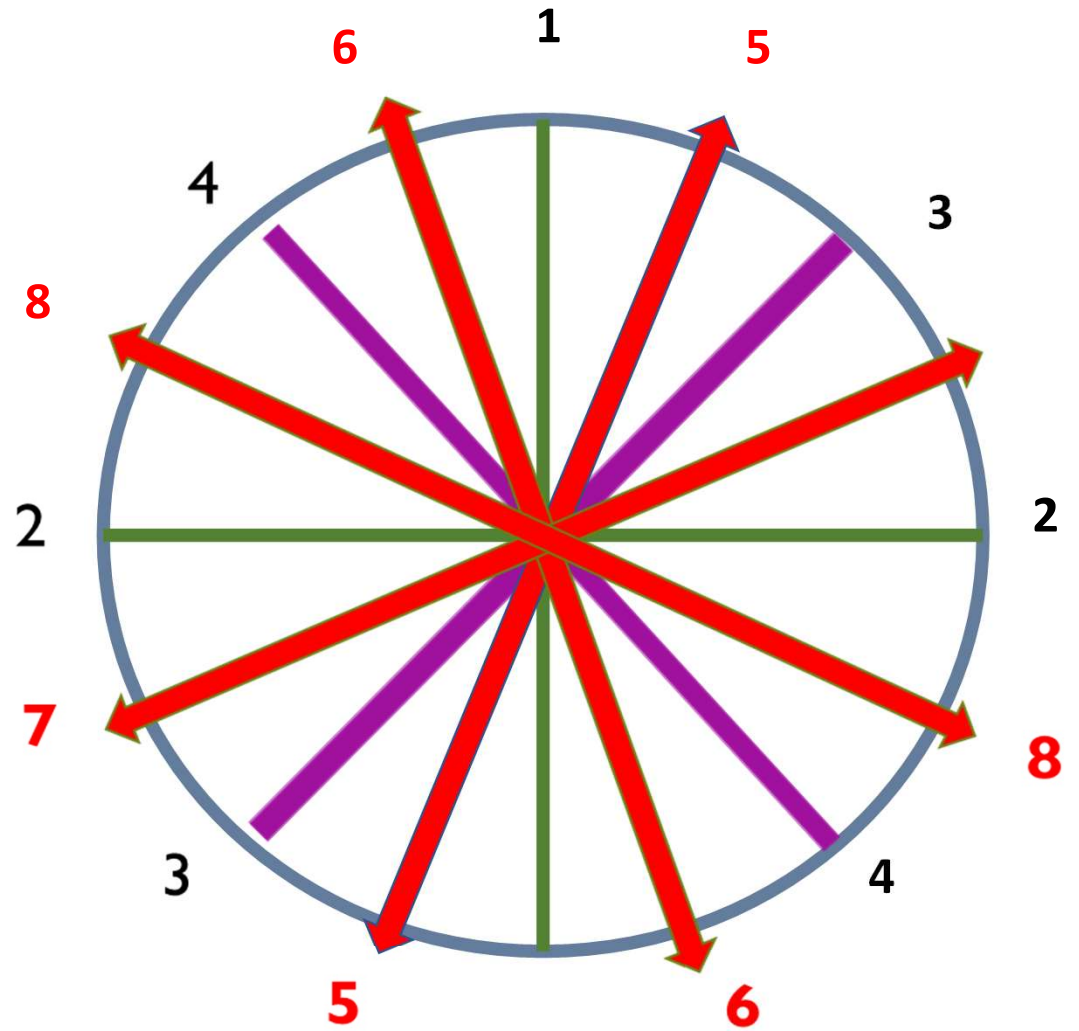


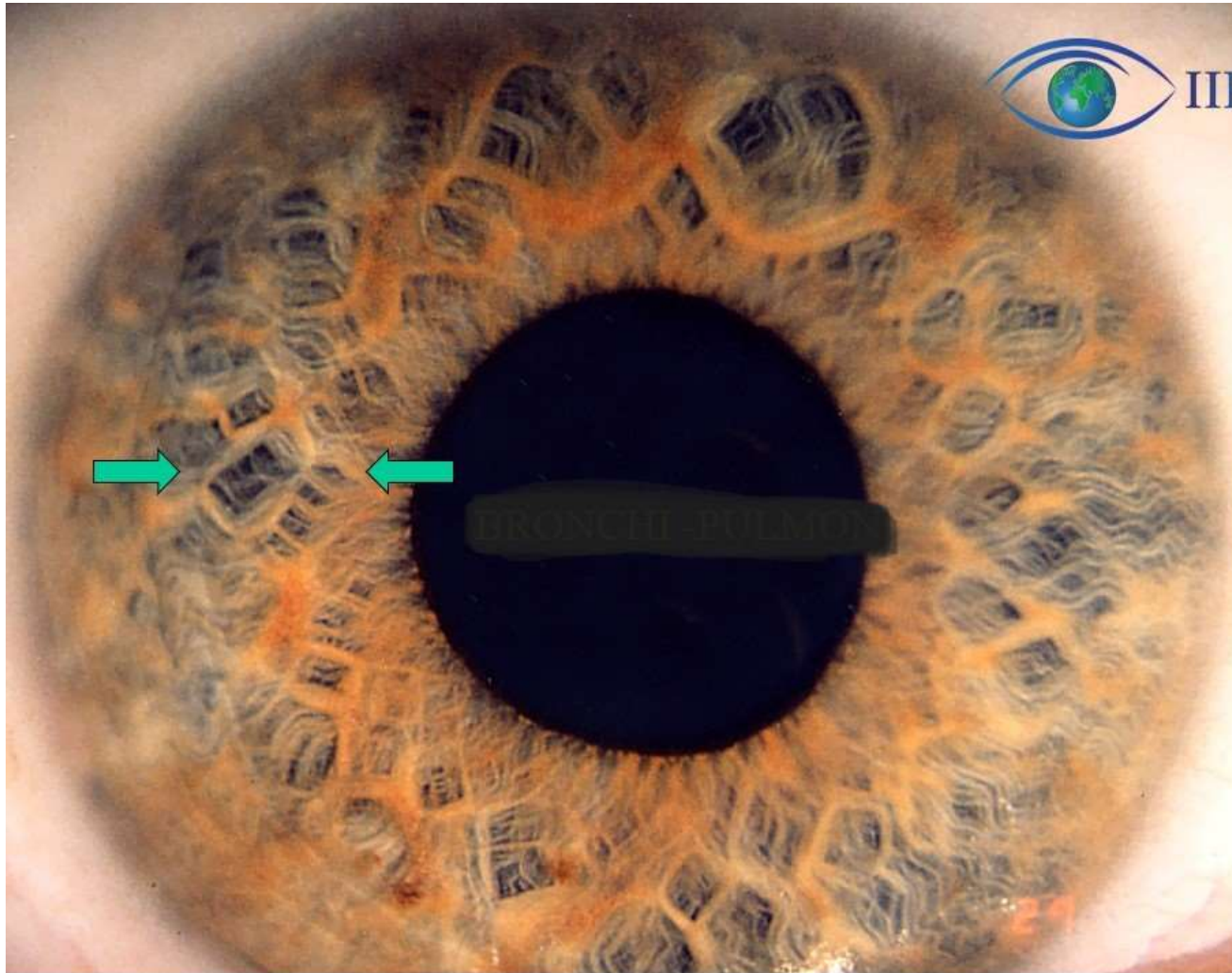
Based on the iris types in RAYID, what is the personality type of this iris?

1. Shaker-Jewel
2. Stream-Jewel
3. Shaker-Flower
4. Flower

Think of Opposites Attract.

Which number is the Disharmony Line?





Look at the green arrows.

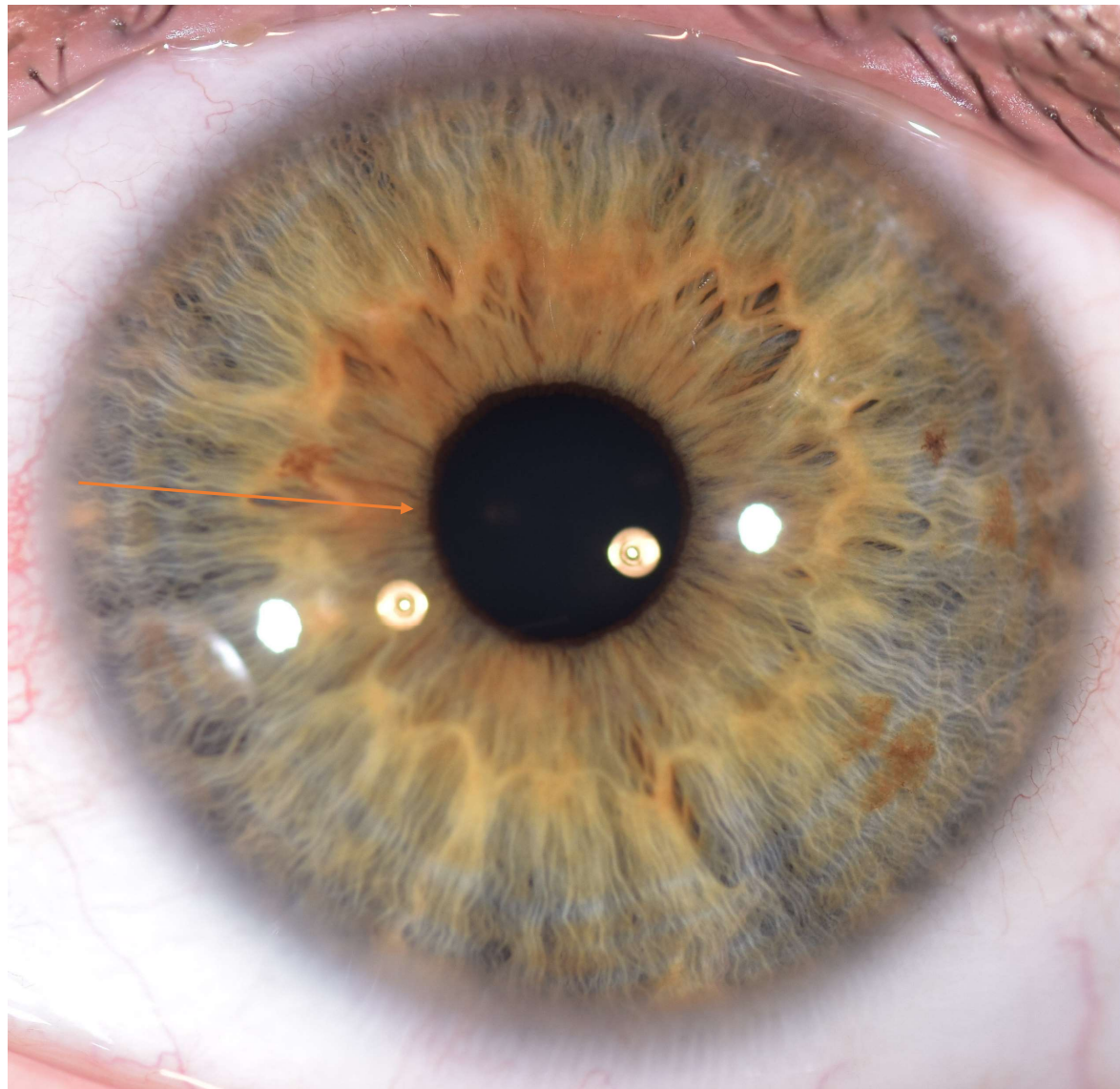
When thinking about Embryology in relation to the iris, what organ would possibly be affected?

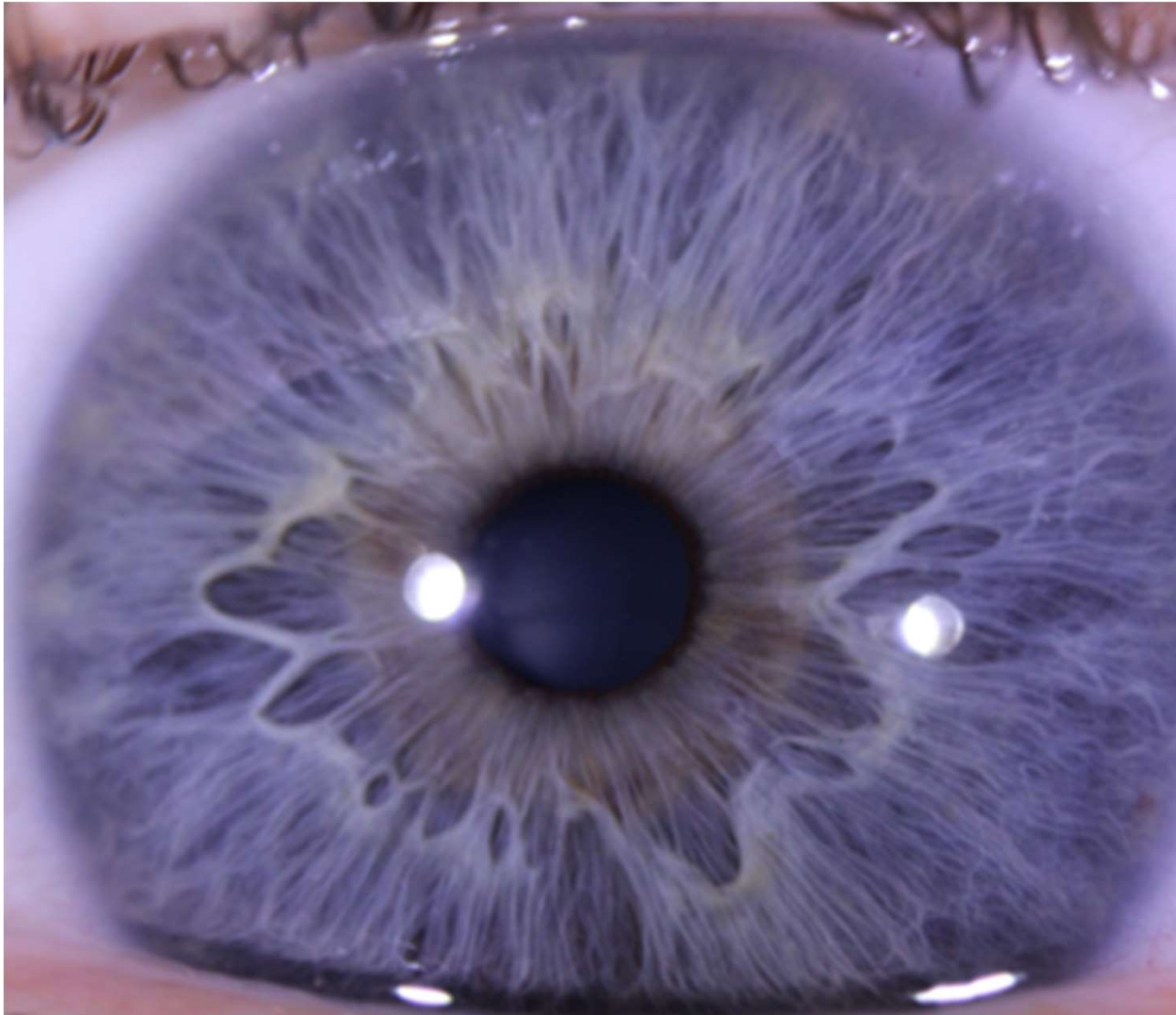
1. Neck
2. Eye
3. Tonsils
4. Bronchus

Think about
Multidimensional
Iridology.

When looking at the
pupil flatness, what
area do you notice?

1. Religion
2. Pleasure
3. EGO
4. Pleasure



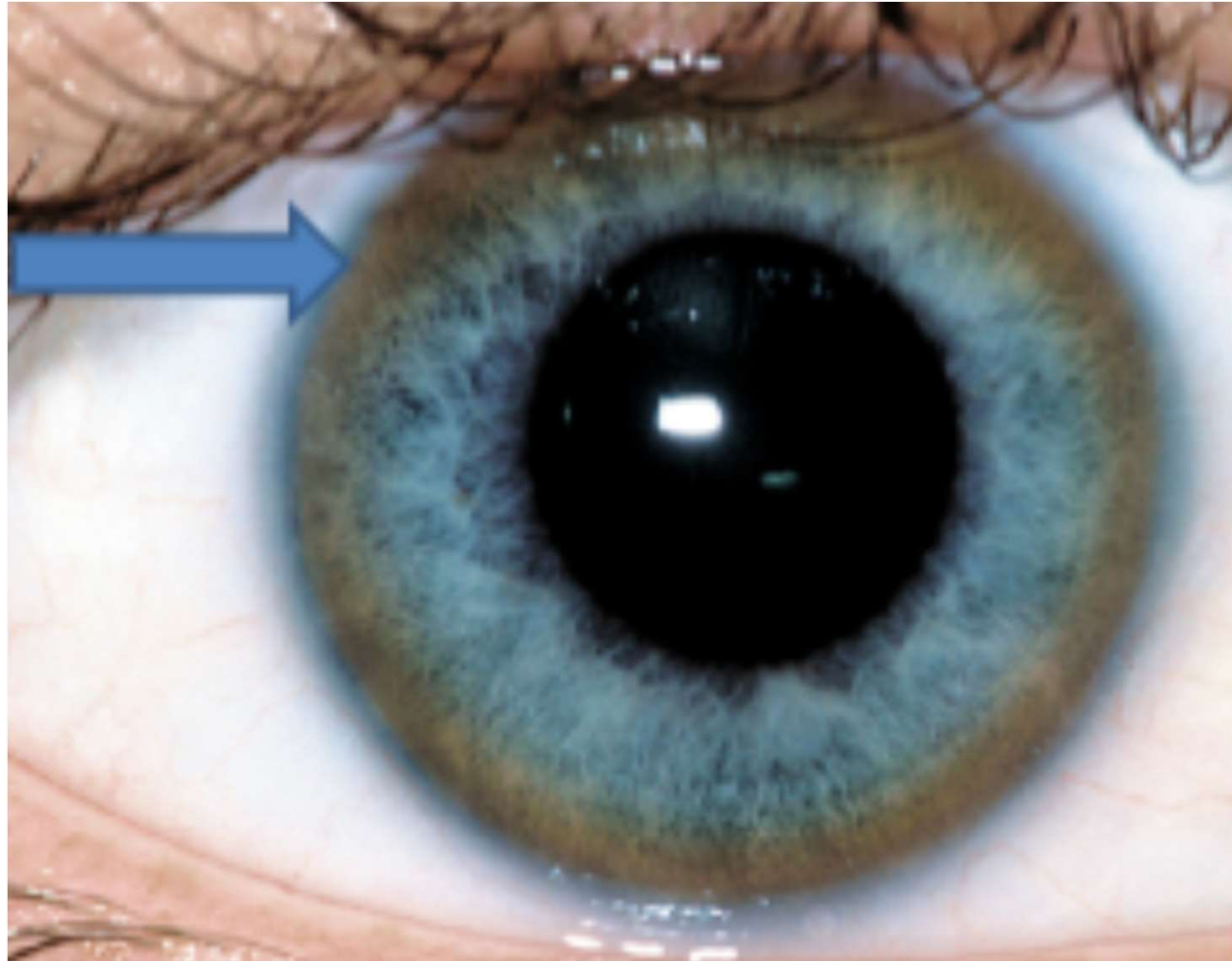


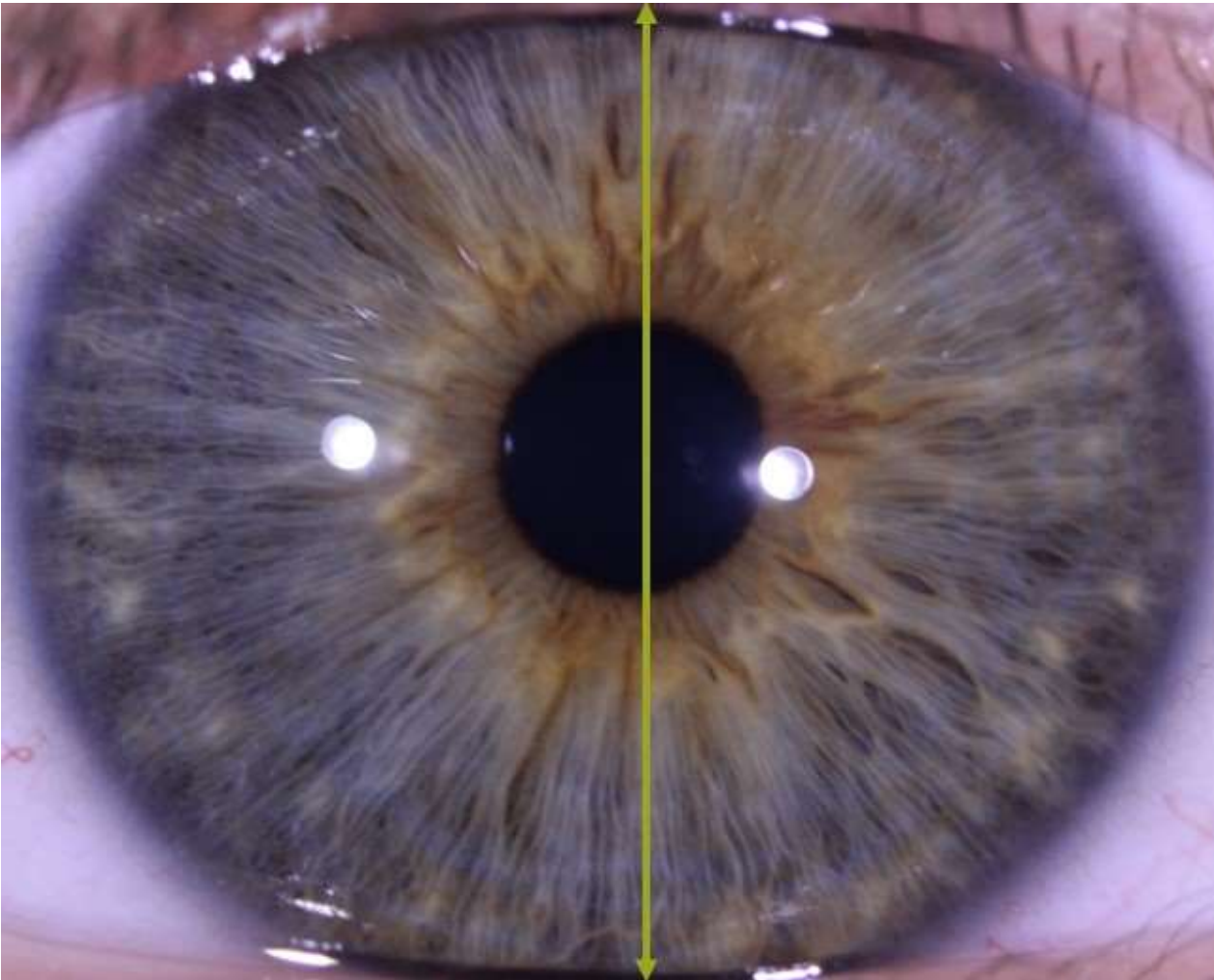
Which syndrome does this person most closely match?

1. Roemheld
2. Cardio Renal
3. Cardio Abdominal
4. Roemheld and Cardio Abdominal

This ring is called a:

1. Lipemic Diathesis
2. Ring of Perfection
3. Corneal Arcus
4. Kayser-Fleisher Ring



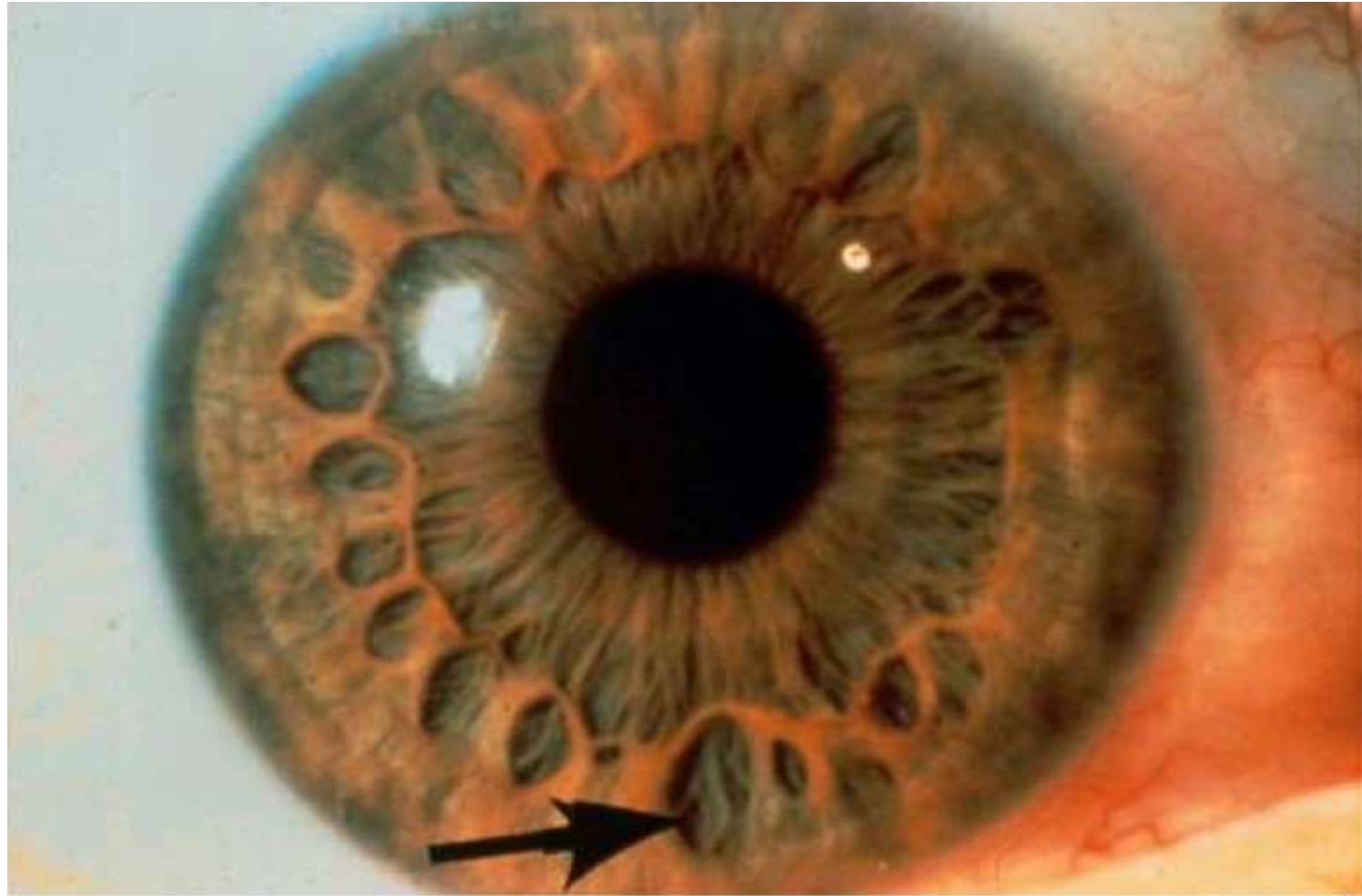


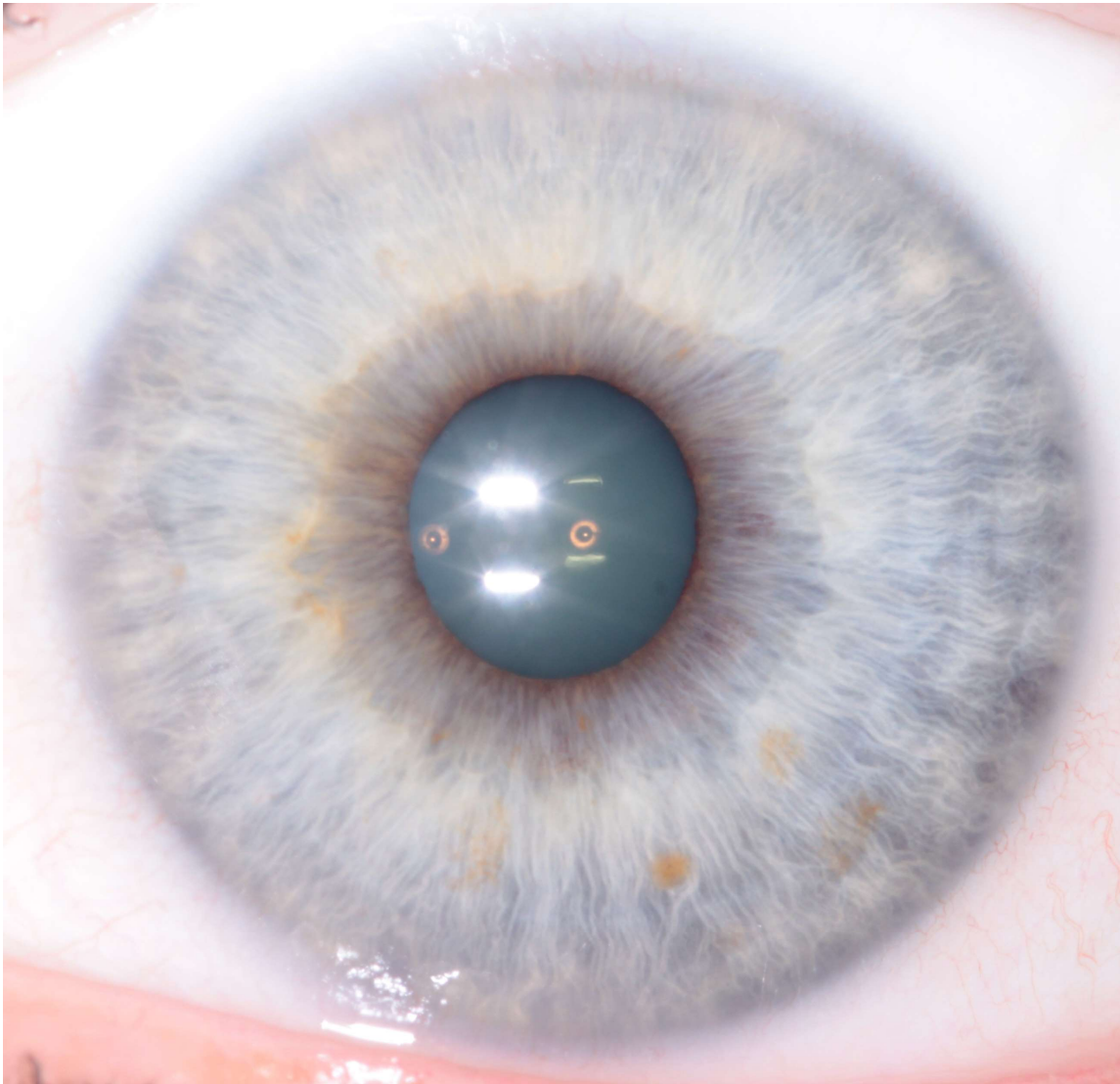
Thinking of Opposites Attract, this line is called:

1. Line of Balance
2. Disharmony Line
3. Nose-Diaphragm Disharmony Line
4. Ear-Bladder Line

Based on RAYID,
this iris would be a:

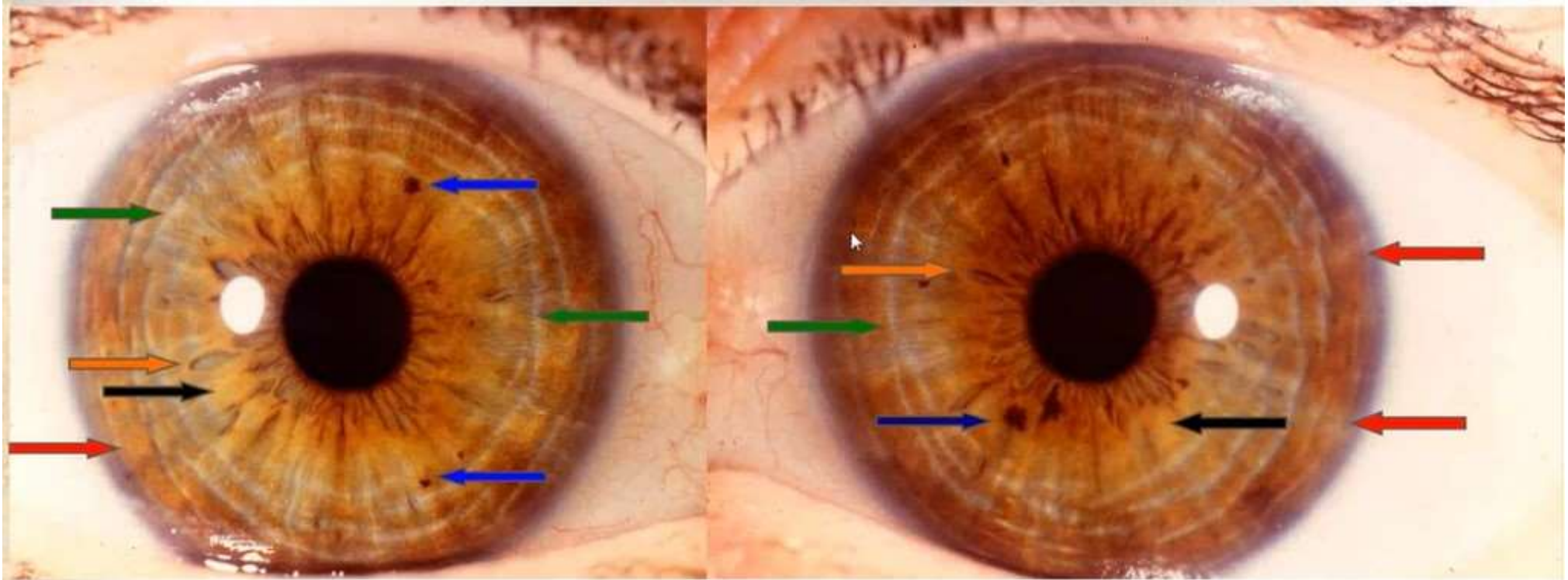
1. Stream-Jewel
2. Shaker-Flower
3. Flower
4. Shaker-Jewel





How would you classify this iris based on Toni Miller's Constitutional Diathesis presentation:

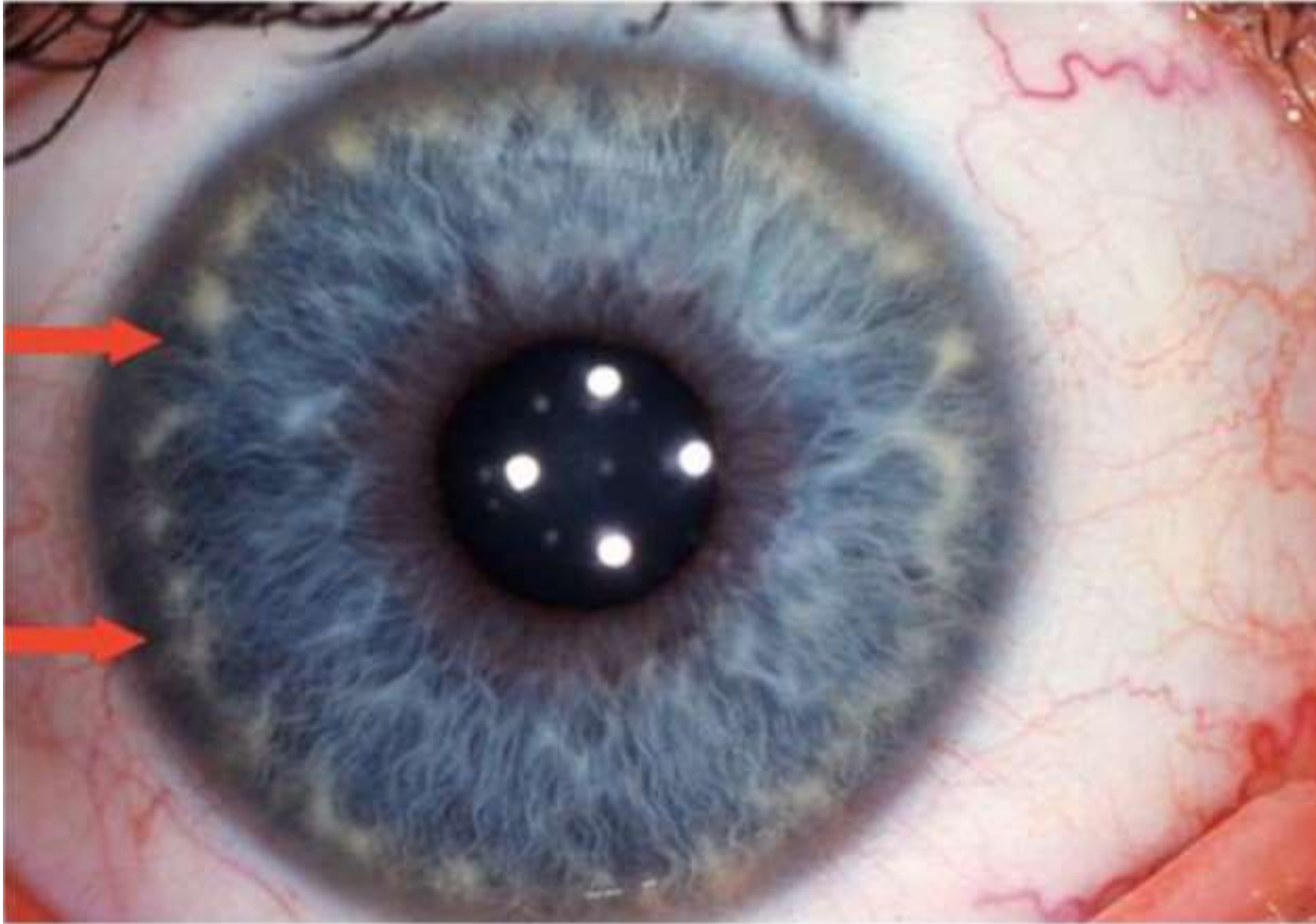
1. Hyper-Acidic
2. Febrile
3. Hydro-Lymphatic
4. Kidney-Lymphatic



Think about the Precancerous Signs.

This iris would be a:

1. Psoric Constitution
2. Sycotic Constitution
3. Generali-Ackerman Constitution
4. None of the above



Think of the RAYID rings.

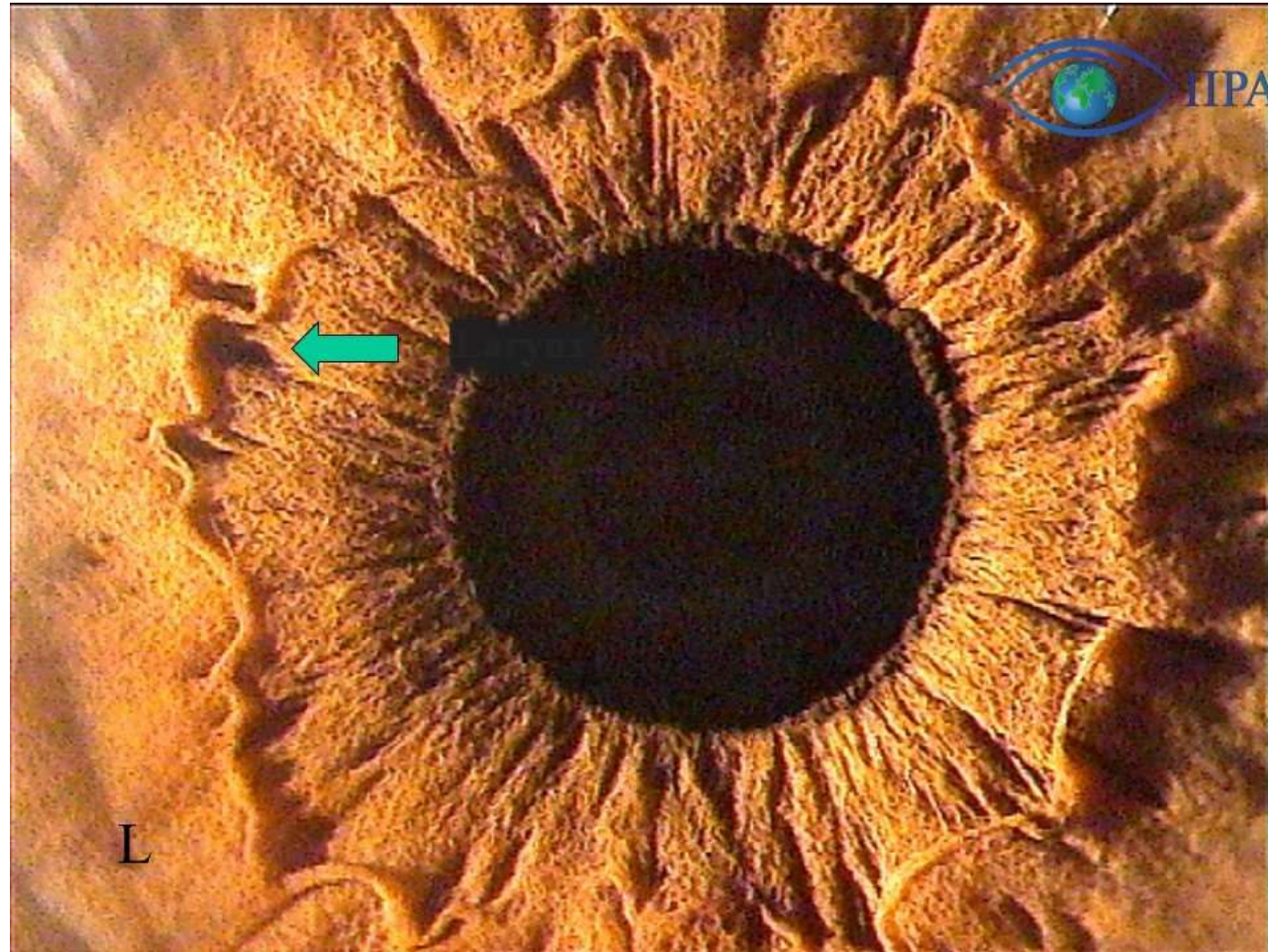
Which ring does this iris have?

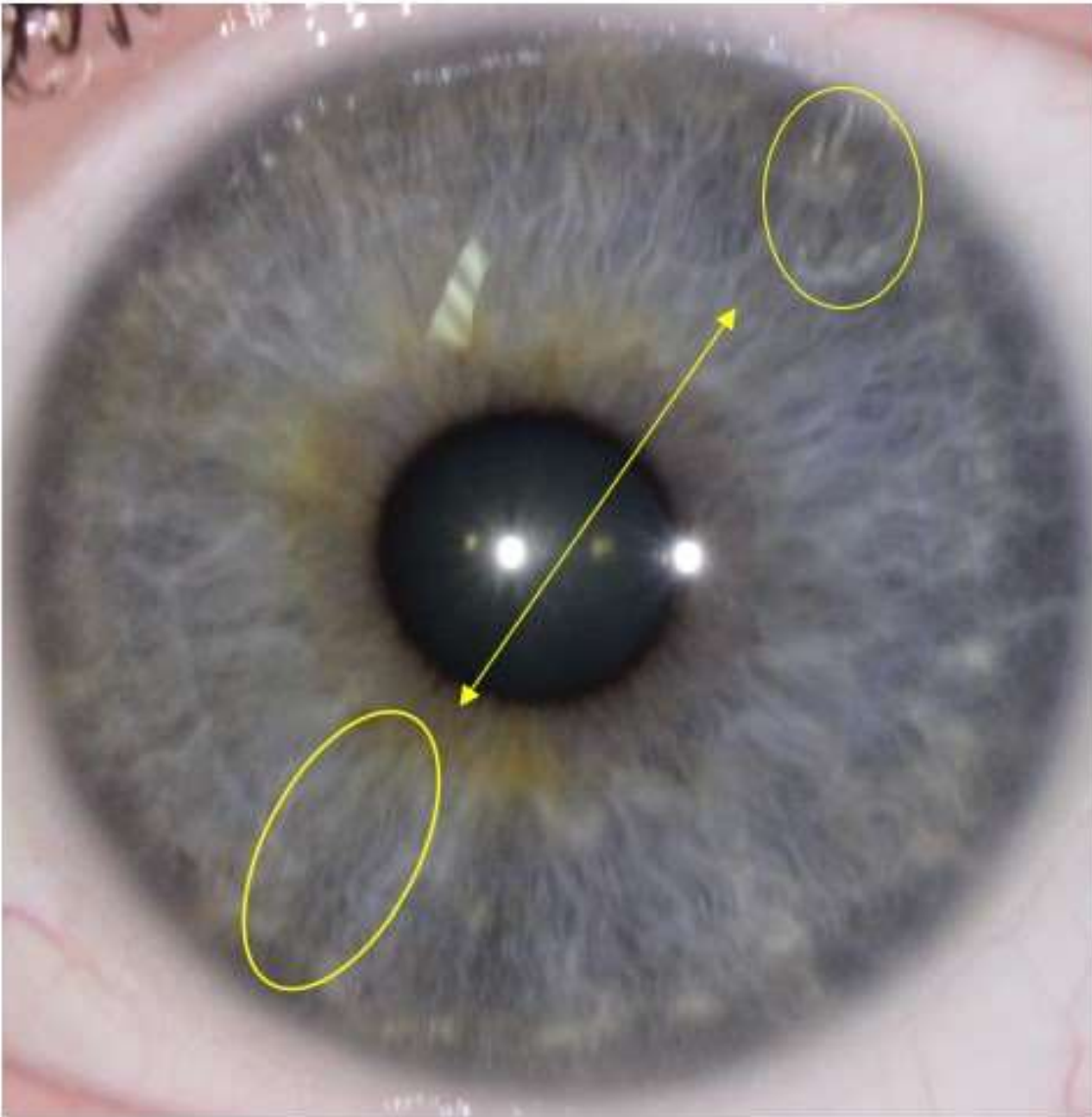
1. Ring of Purpose
2. Ring of Harmony
3. Ring of Freedom
4. Ring of Determination

Notice the green arrow.

When you think about Embryology in relation to the iris, what part of the body could possibly be affected?

1. Adenoids
2. Larynx
3. Bladder
4. Thyroid





Think of Opposites Attract.

When you see the yellow line across the iris the line is the:

1. Disharmony Line
2. Ear-Bladder Line
3. Mouth-Hand Line
4. Cerebellum-Uterus Line

Think about SpaceRisk

- If we have the sign on the Limbus and in the area of the organ corresponding to the space
- If we have a sign on the Limbus and on the I.P.B.
- If we have a sign on the Limbus and embryological topography.

It's called:

1. Discordant
2. Concordant

