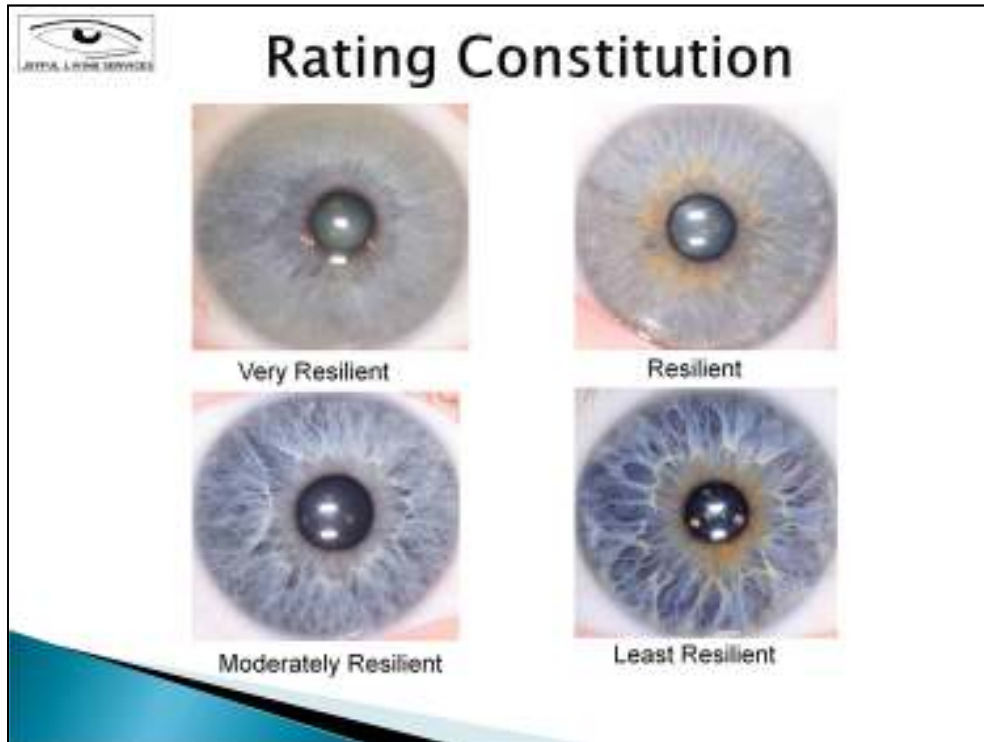


Welcome everyone!



**Density** = Resistance or resilience. Refers to the body's ability to resist disease or dis-ease as Dr. Jensen used to explain it.

Very Resilient

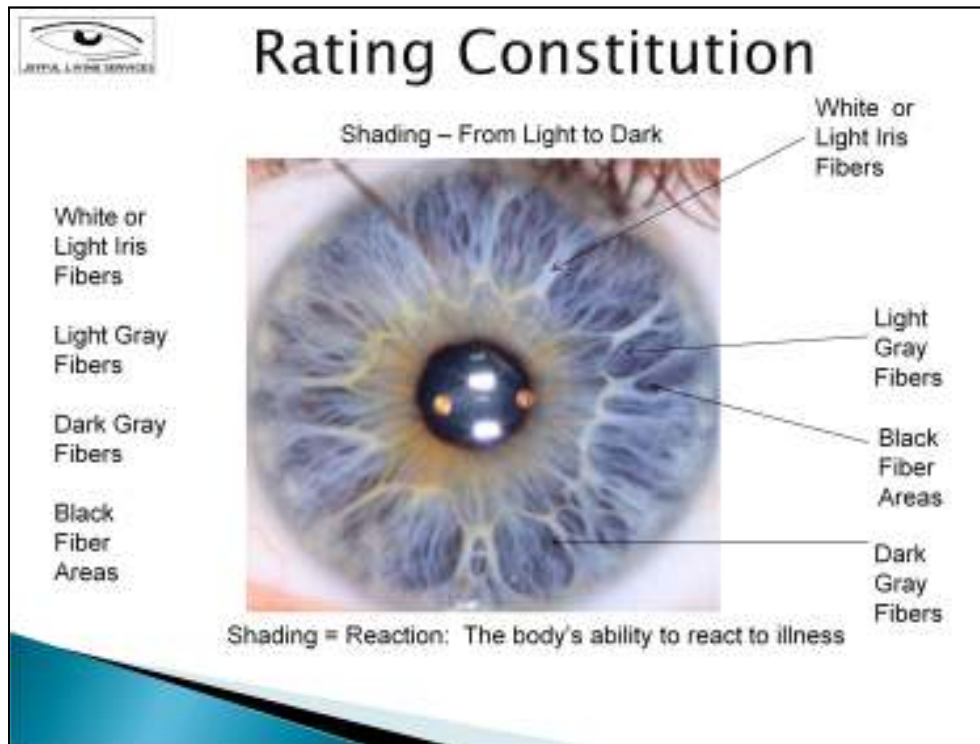
Resilient

Moderately Resilient

Least Resilient

**Iris fiber density is an indication of the structural integrity of the body. Density in iridology is related to the closeness and depth of the weave of the iris fibers or trabeculae within the iris stroma.**

**Resilience** refers to the body's ability to resist disease or to bounce back quickly from illness. Density and shading work together to help determine the true nature of the genetically deficient areas in a person's body.



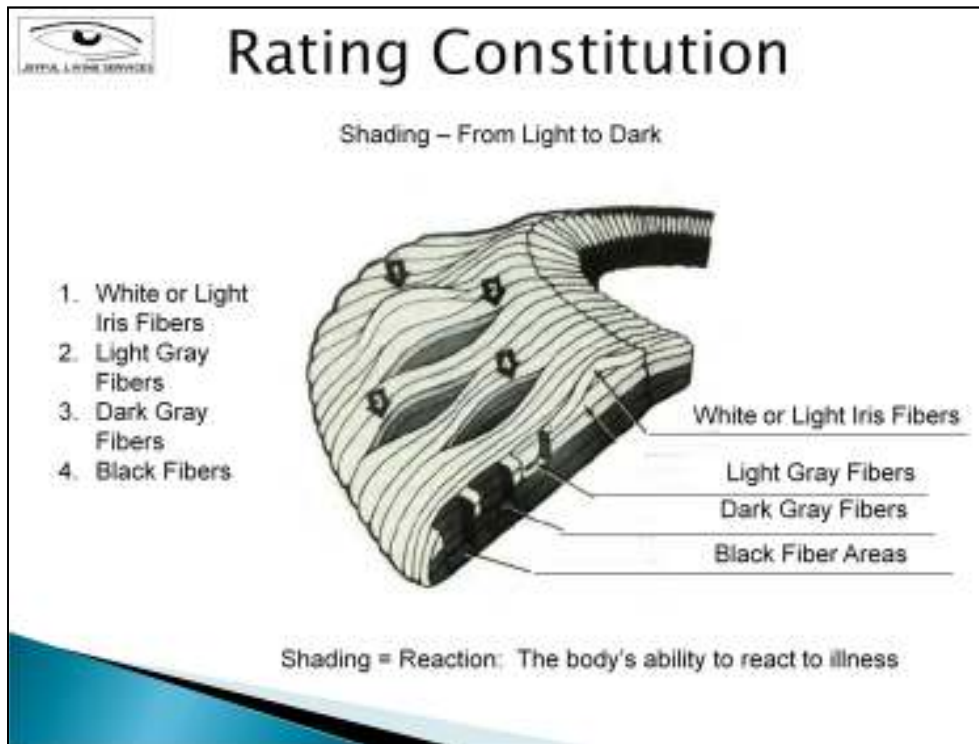
**White or Light Iris Fibers** that are raised signify potential agitation, irritation, inflammation, possible pain or discharge to the organs represented by the reaction fields of the iris that these signs are found in.

**Light Gray Fibers** that are slightly lower than the stromal surface indicate a tendency for sluggishness and a lowered ability to ward off illness in the organs represented by the iris fields they are in.

**Dark Gray Fibers** that are deeper than the light gray fibers show potential deficiency, lack of ability to hold in nutrients and throw off toxicity.

**Black Fiber Areas** in the iris show the greatest genetic weakness or insufficiency in those organ areas that they represent in the body. These organs may not cause difficulty until later in life. Measures of prevention should be considered particularly if there has been much physical abuse as they are believed to be predictors of serious illnesses.

**Density and Shading** work together to help determine the true nature of the genetically deficient areas in a person's body.




**White or Light Iris Fibers** that are raised signify potential agitation, irritation, inflammation, possible pain or discharge to the organs represented by the reaction fields of the iris that these signs are found in.

**Light Gray Fibers** that are slightly lower than the stromal surface indicate a tendency for sluggishness and a lowered ability to ward off illness in the organs represented by the iris fields they are in.

**Dark Gray Fibers** that are deeper than the light gray fibers show potential deficiency, lack of ability to hold in nutrients and throw off toxicity.

**Black Fiber Areas** in the iris show the greatest genetic weakness or insufficiency in those organ areas that they represent in the body. These organs may not cause difficulty until later in life. Measures of prevention should be considered particularly if there has been much physical abuse as they are believed to be predictors of serious illnesses.

**Density and Shading** work together to help determine the true nature of the genetically deficient areas in a person's body.



## Iris Constitutional Subtypes by Color

Lymphatic	Biliary	Hematogenic
Overacid	Hydrogenoid	Ferrum Chromatose/Tiger Striping
Febrile	Ferrum Chromatose/Tiger Striping	Possible Elevated Blood Levels of Blood Pressure, Blood Sugar, and Elevated Cholesterol
Hydrogenoid	Scurf Rim	
Uric Acid		
Scurf Rim		

These are the categories of subtypes based on color that fall within each major type.

### **Lymphatic Iris Constitution Based on Color**

- Overacid
- Febrile
- Hydrogenoid
- Uric Acid
- Scurf Rim

### **Biliary Iris Constitution Based on Color**

- Hydrogenoid
- Ferrum Chromatose/Tiger Striping
- Scurf Rim

### **Hematogenic Iris Constitution Based on Color**

- Ferrum Chromatose/Tiger Striping
- Possible Elevated Blood Levels of Blood Pressure, Blood Sugar, and Elevated Cholesterol



## Iris Constitutional Subtypes Based on Iris Structure

Lymphatic	Biliary	Hematogenic
Neurogenic	Neurogenic	Neurogenic
Anxiety Tetanic	Anxiety Tetanic	Anxiety Tetanic
Polyglandular	Polyglandular	Polyglandular
Connective Tissue	Connective Tissue	Connective Tissue

These are the categories of subtypes based on structure that fall within each major type.

### **Lymphatic Iris Constitution Subtypes**

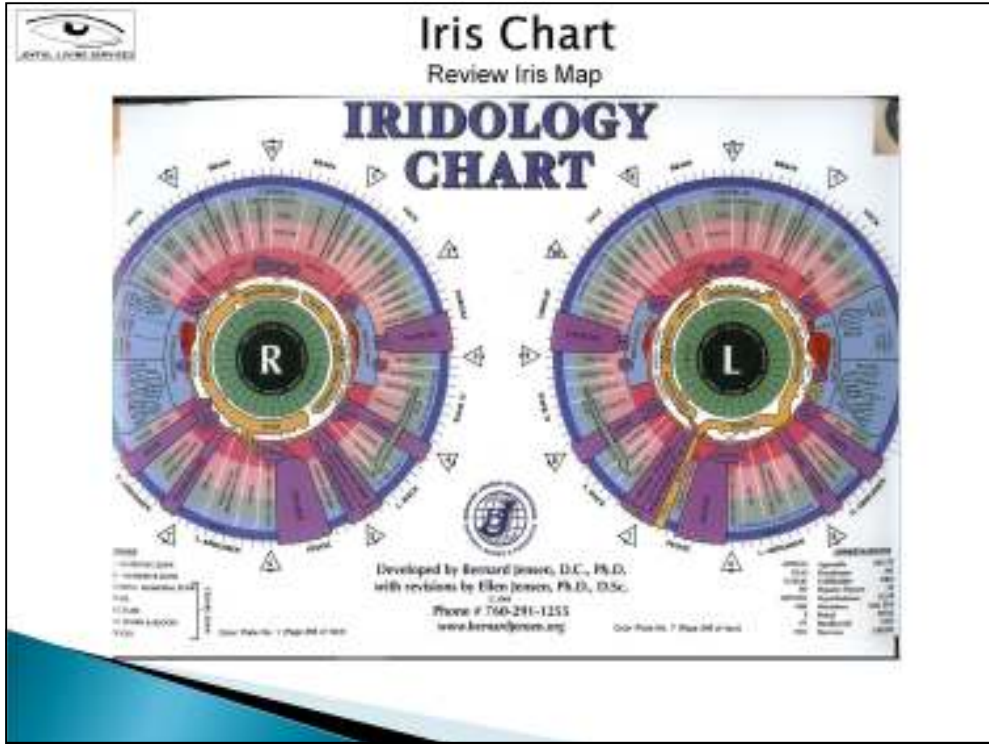
- Neurogenic
- Anxiety Tetanic
- Polyglandular
- Connective Tissue

### **Biliary Iris Constitution Subtypes**

- Neurogenic
- Anxiety Tetanic
- Polyglandular
- Connective Tissue

### **Hematogenic Iris Constitution Subtypes**

- Neurogenic
- Anxiety Tetanic
- Polyglandular
- Connective Tissue

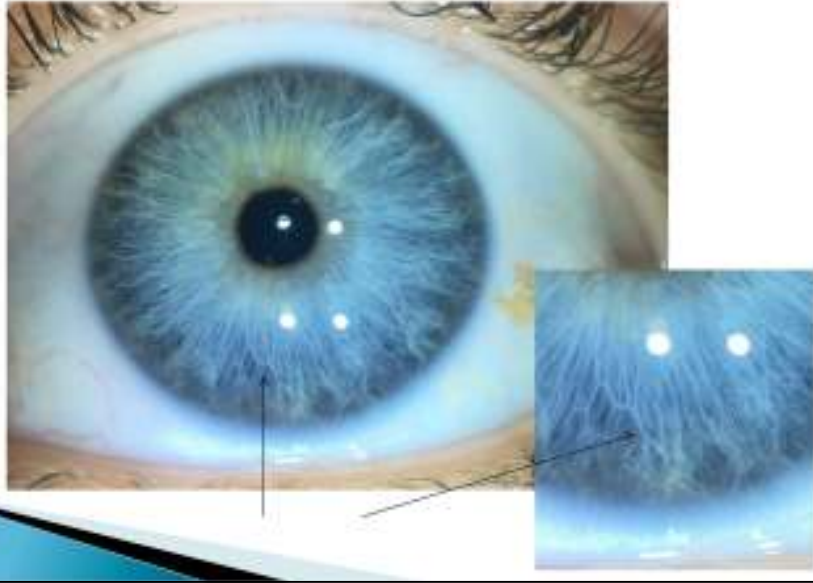


Ellen Tart-Jensen, Ph.D. Updated Iridology Chart Review



# Iris Signs – Definitions

## Transversals



- Iris fibers that have gone askew.
- They travel across the radial fibers.
- If they are white or lighter than the iris color, they indicate a tendency for inflammation or pain.
- They also mean a tendency for agitation and irritation in the areas of the body they reflect.





# Iris Signs – Definitions

Transversals



- Iris fibers that have gone askew.
- They travel across the radial fibers.
- If they are white or lighter than the iris color, they indicate a tendency for inflammation or pain.
- They also mean a tendency for agitation and irritation in the areas of the body they reflect.



# Iris Signs – Definitions

Vascularized Transversals



- Transversals that are pink or red.
- The protective sheath that covers them has worn away.
- This is a more serious sign than the white or light transversal.
- It may indicate a potential for serious tissue changes, and possibly congestion and pain.



Tricia - Case Study #1



## Jaw Areas in the Sclera



These are Trauma Forks in the Upper Jaw of the right sclera and Upper Jaw of the left sclera.

Tricia - Case Study #1



## Tricia - Case Study #1



Tricia - Case Study #1



Lona – Case Study #2



## James - Case Study #3



James - Case Study #3



## Sylvia - Case Study #4



Sylvia - Case Study #4





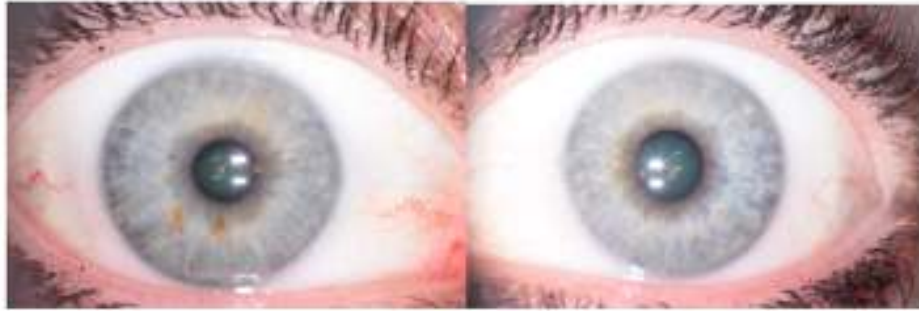
## Ovidiu - Case Study #5



Ovidiu - Case Study #5



## Debi - Case Study #6



Debi - Case Study #6



## Charlotte - Case Study #7



Charlotte - Case Study #7



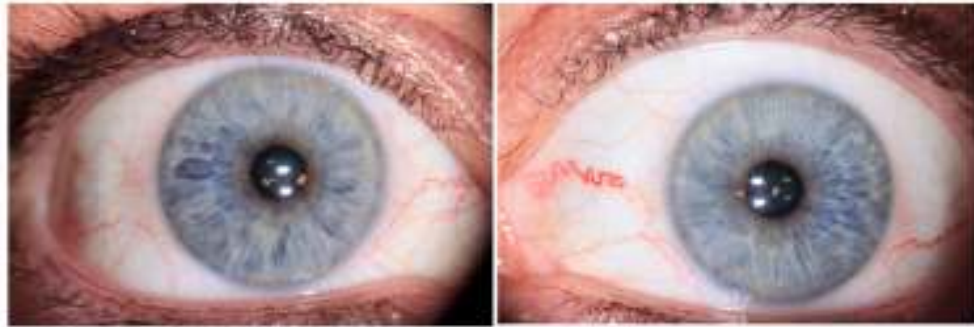
## Arthur – Case Study #8



Arthur – Case Study #8



## Laura - Case Study #9



Laura - Case Study #9



## Mark - Case Study #10



Mark - Case Study #10



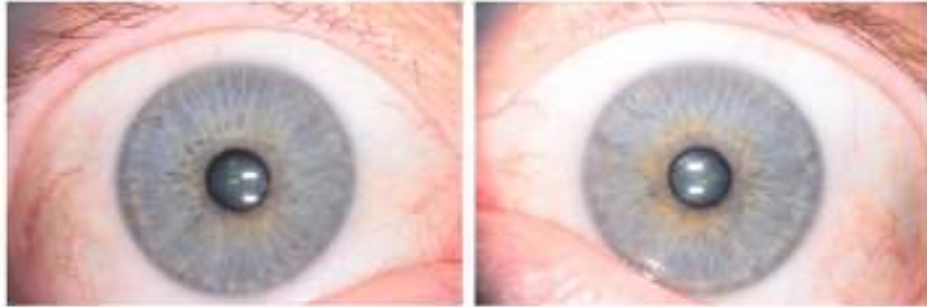
## Mirella - Case Study #11



Mirella - Case Study #11



## James - Case Study #12



James - Case Study #12





## Joshua - Case Study #13



Joshua - Case Study #13



## Brenda - Case Study #14



Brenda - Case Study #14



## Josephine – Case Study #15



Josephine – Case Study #15



# Elaine - Case Study #16



Top: 2012



Bottom: 2017



Elaine - Case Study #16



Tricia 28 years ago – Case Study #22



Family – 3 Generations: Male – Case Study #17



Family – Father, Mother Son – Case Study #18



Family – 3 Generations: Female – Case Study #19





Family – Father, Mother, Daughter – Case Study #20



Family – Father, Mother, Daughter, Son – Case Study #21