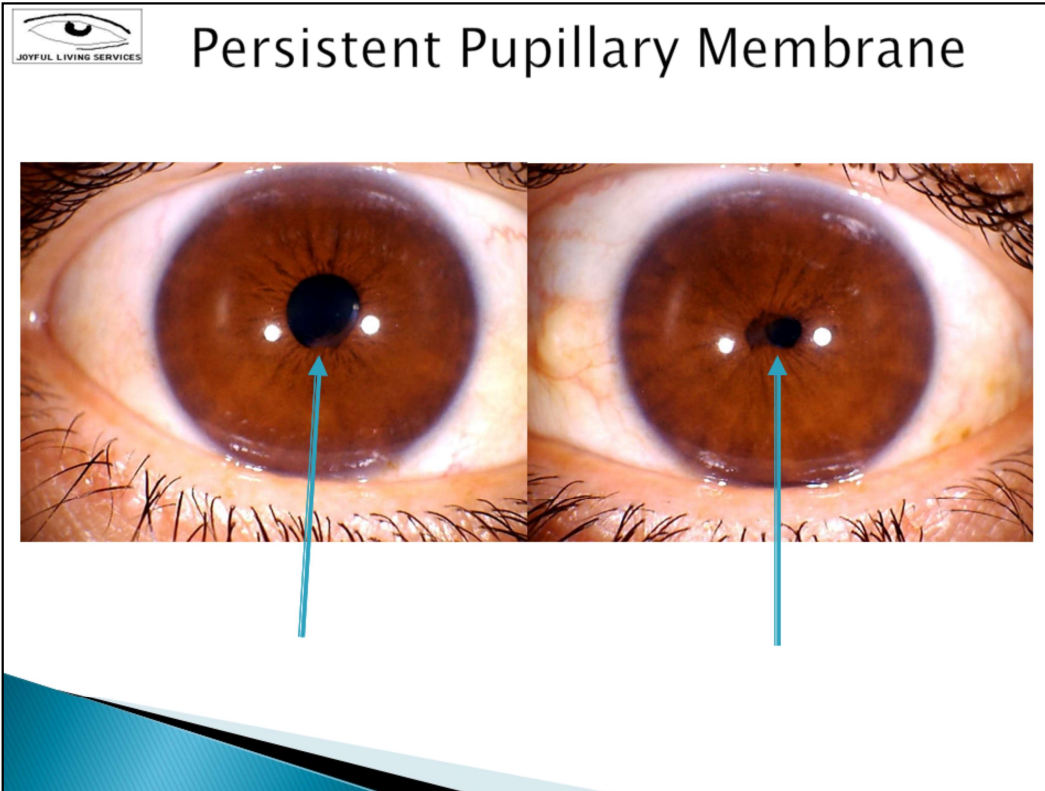


Welcome everyone!



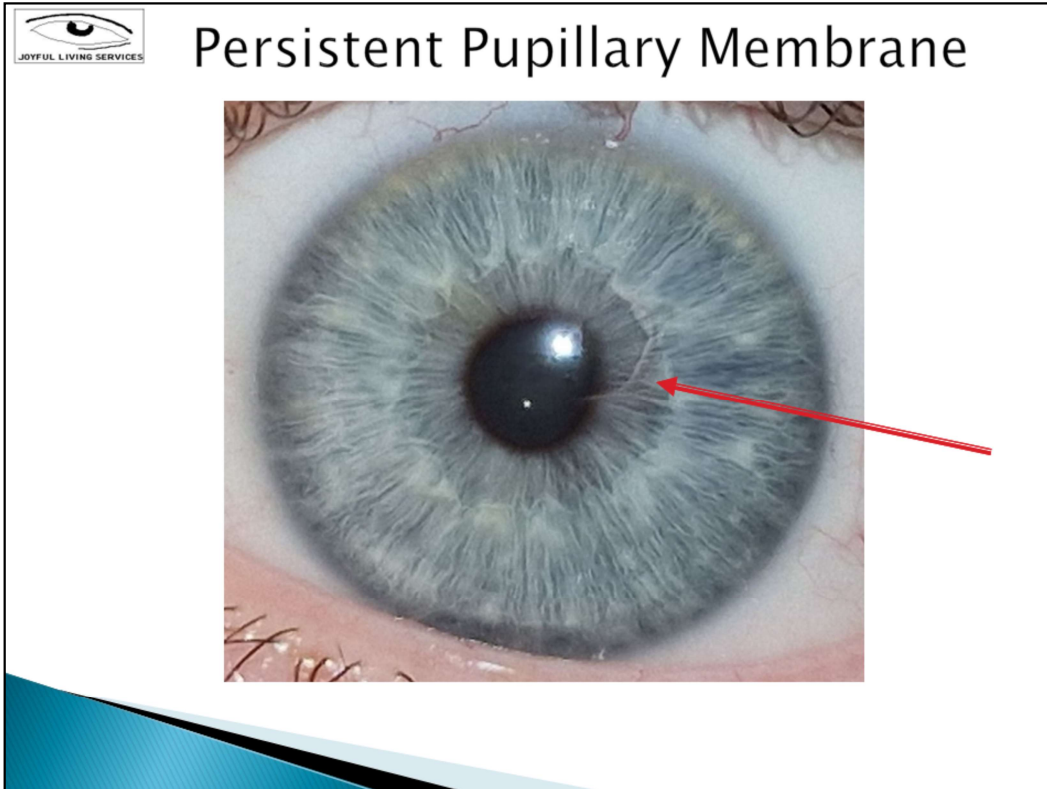
### **Persistent Pupillary Membrane:**

Toni Miller, Integrated Iridology Textbook, Page 345

**Sign:** This is a condition of the eye involving remnants of the fetal membrane that persist as strands of tissue crossing the pupil. The pupillary membrane acts as a source of blood supply for the lens during fetal development.

This membrane normally atrophies between birth and eight weeks. PPM occurs when the atrophy is incomplete.

**Significance:** Persistent pupillary membrane is generally without symptoms and is not usually a cause of visual discomfort for the individual. The PPM strands usually connect to other parts of the iris but they can also connect to the cornea or lens. Attachment to the cornea can cause small corneal opacities while attachment to the lens can cause small cataracts.



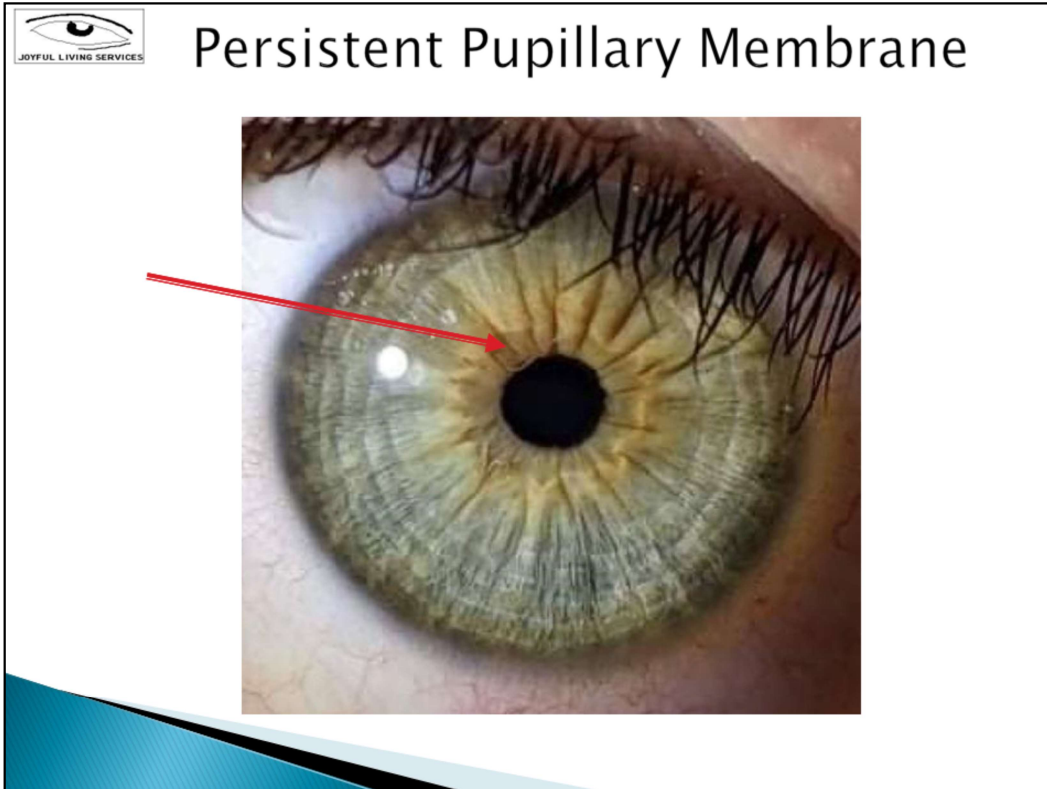
### **Persistent Pupillary Membrane:**

Toni Miller, Integrated Iridology Textbook, Page 345

**Sign:** This is a condition of the eye involving remnants of the fetal membrane that persist as strands of tissue crossing the pupil. The pupillary membrane acts as a source of blood supply for the lens during fetal development.

This membrane normally atrophies between birth and eight weeks. PPM occurs when the atrophy is incomplete.

**Significance:** Persistent pupillary membrane is generally without symptoms and is not usually a cause of visual discomfort for the individual. The PPM strands usually connect to other parts of the iris but they can also connect to the cornea or lens. Attachment to the cornea can cause small corneal opacities while attachment to the lens can cause small cataracts.



### **Persistent Pupillary Membrane:**

Toni Miller, Integrated Iridology Textbook, Page 345

**Sign:** This is a condition of the eye involving remnants of the fetal membrane that persist as strands of tissue crossing the pupil. The pupillary membrane acts as a source of blood supply for the lens during fetal development.

This membrane normally atrophies between birth and eight weeks. PPM occurs when the atrophy is incomplete.

**Significance:** Persistent pupillary membrane is generally without symptoms and is not usually a cause of visual discomfort for the individual. The PPM strands usually connect to other parts of the iris but they can also connect to the cornea or lens. Attachment to the cornea can cause small corneal opacities while attachment to the lens can cause small cataracts.