



# Lipemic Diatheses





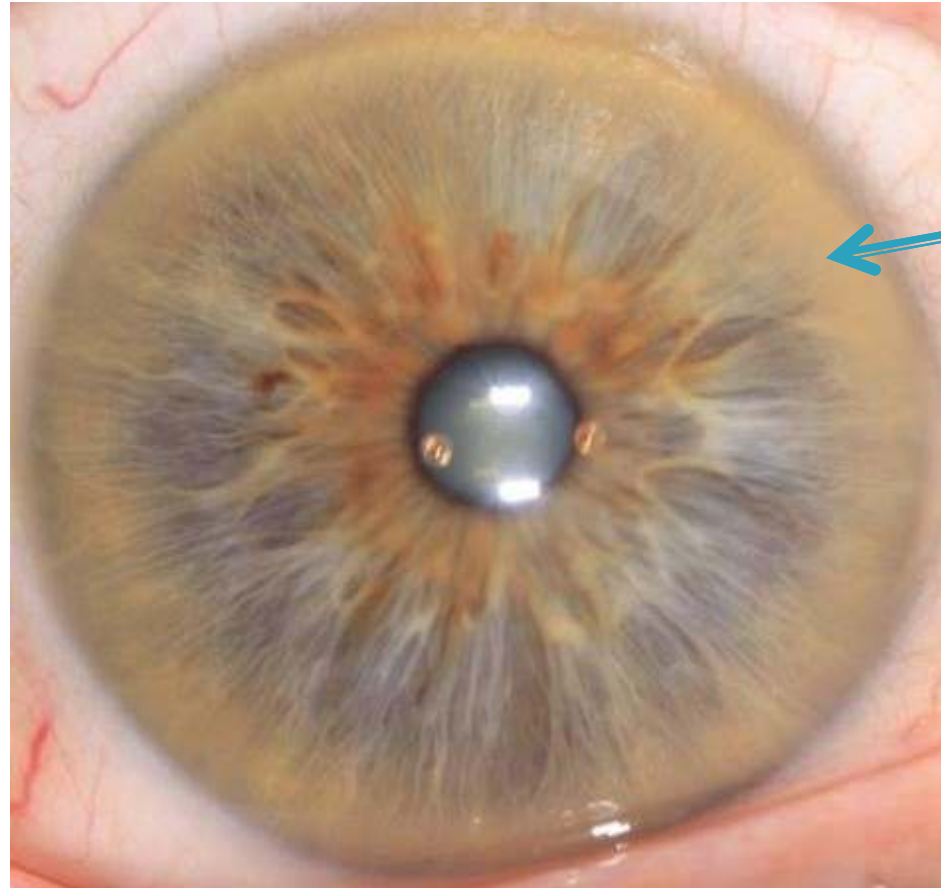
# Lipemic Diathesis Corneal Sign

- ▶ Lymphatic Eye
- ▶ Biliary Eye
- ▶ Hematogenic Eye





# Lipemic Diathesis Lymphatic Eye



This sign is a corneal marking that appears on the cornea and NOT the iris.

If this sign is seen in someone under the age of 40,  
they need to be under a medical physician's care.

This sign is noted as someone who is aging.



# Lipemic Diathesis Lymphatic Eye

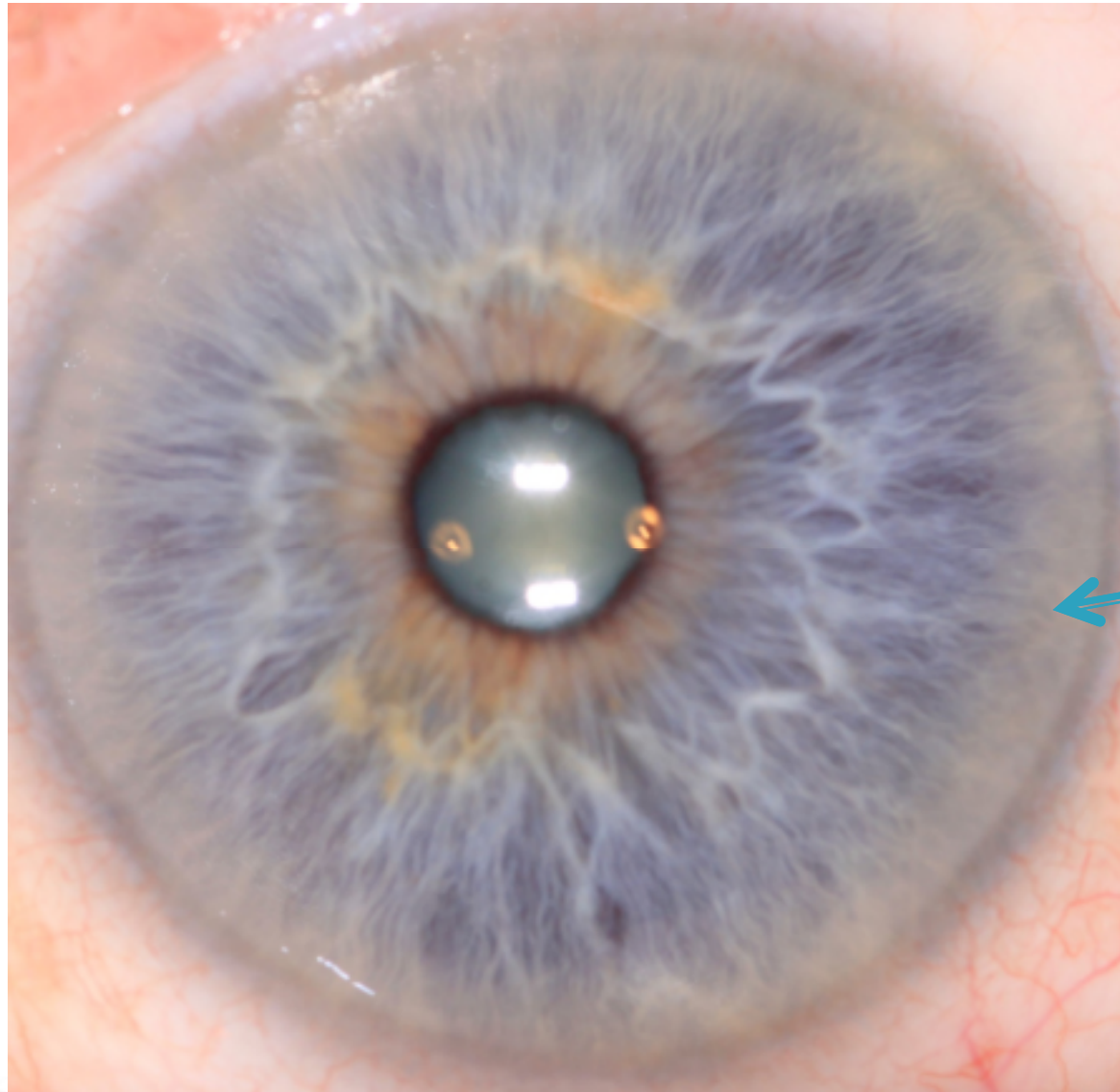
## Suggestions for Improving Health

- Avoid inorganic minerals such as table salt, dolomite, oyster shell calcium
- Eliminate red meats high in fat, pork, fried foods, dairy products, coffee, alcohol, non-dairy creamers, processed foods, white bread, black tea, tobacco.
- Increase green vegetables. Use supplements high in chlorophyll such as chlorella, blue-green algae, wheat grass juice.
- Eat fiber-rich foods to help reduce serum cholesterol such as barley, beans, brown rice, oats, oat bran, rice bran, glucomannan.
- Pure virgin olive oil helps to lower serum cholesterol. Use as a salad dressing with lemon juice. Add cayenne as it improves circulation. Liquefy parsley, alfalfa sprouts and fresh pineapple juice and sip slowly.
- To improve circulation, drink tea made with Elder flowers. Drink potassium broths made with potato peelings. Garlic and lecithin are excellent for lower cholesterol.
- Policosanol made from the sugar cane plant helps to lower cholesterol.
- Liver cleanse, bowel cleanse, and exercise are all important.





# Lipemic Diathesis Lymphatic Eye



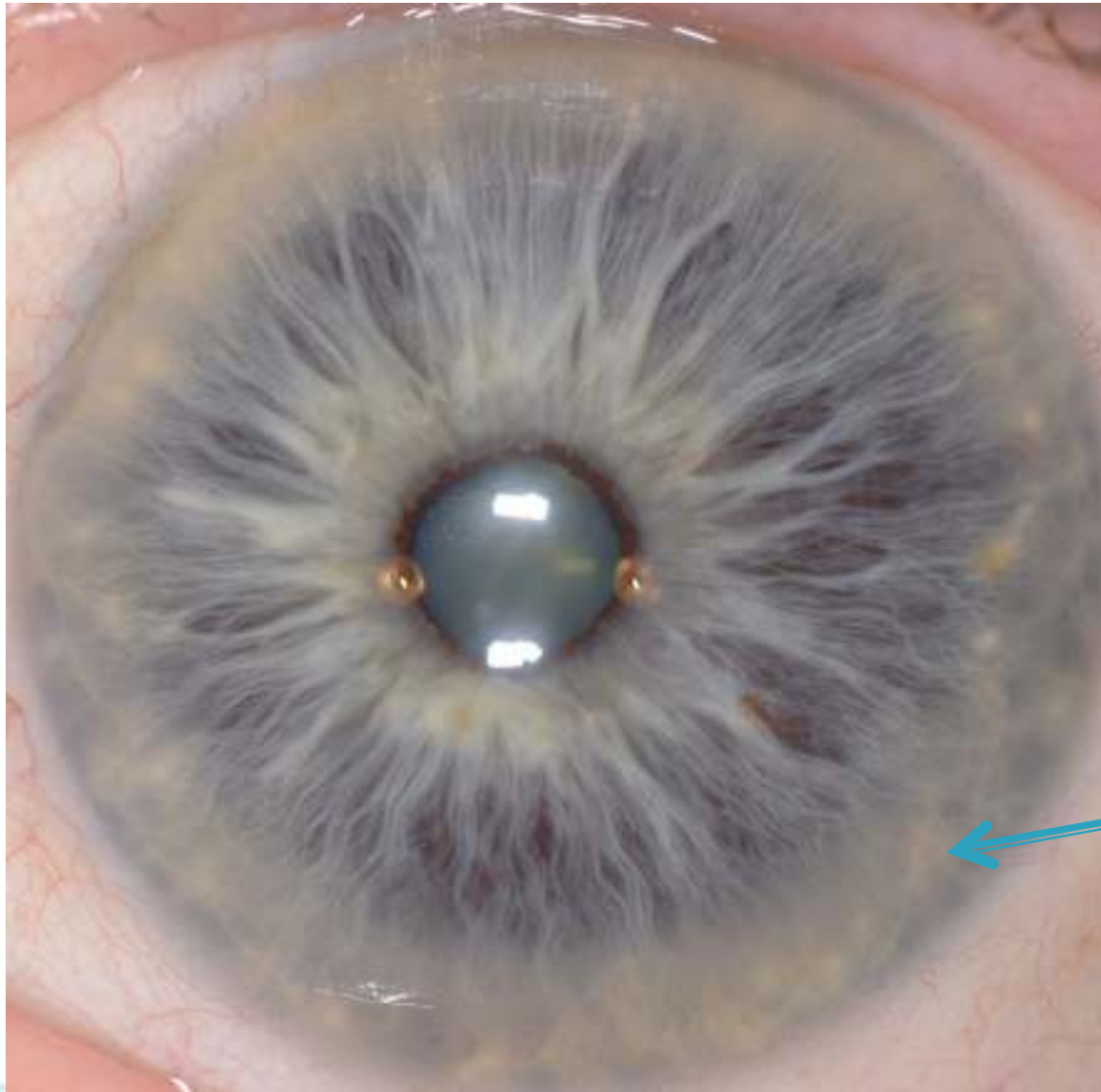


# Lipemic Diathesis Lymphatic Eye



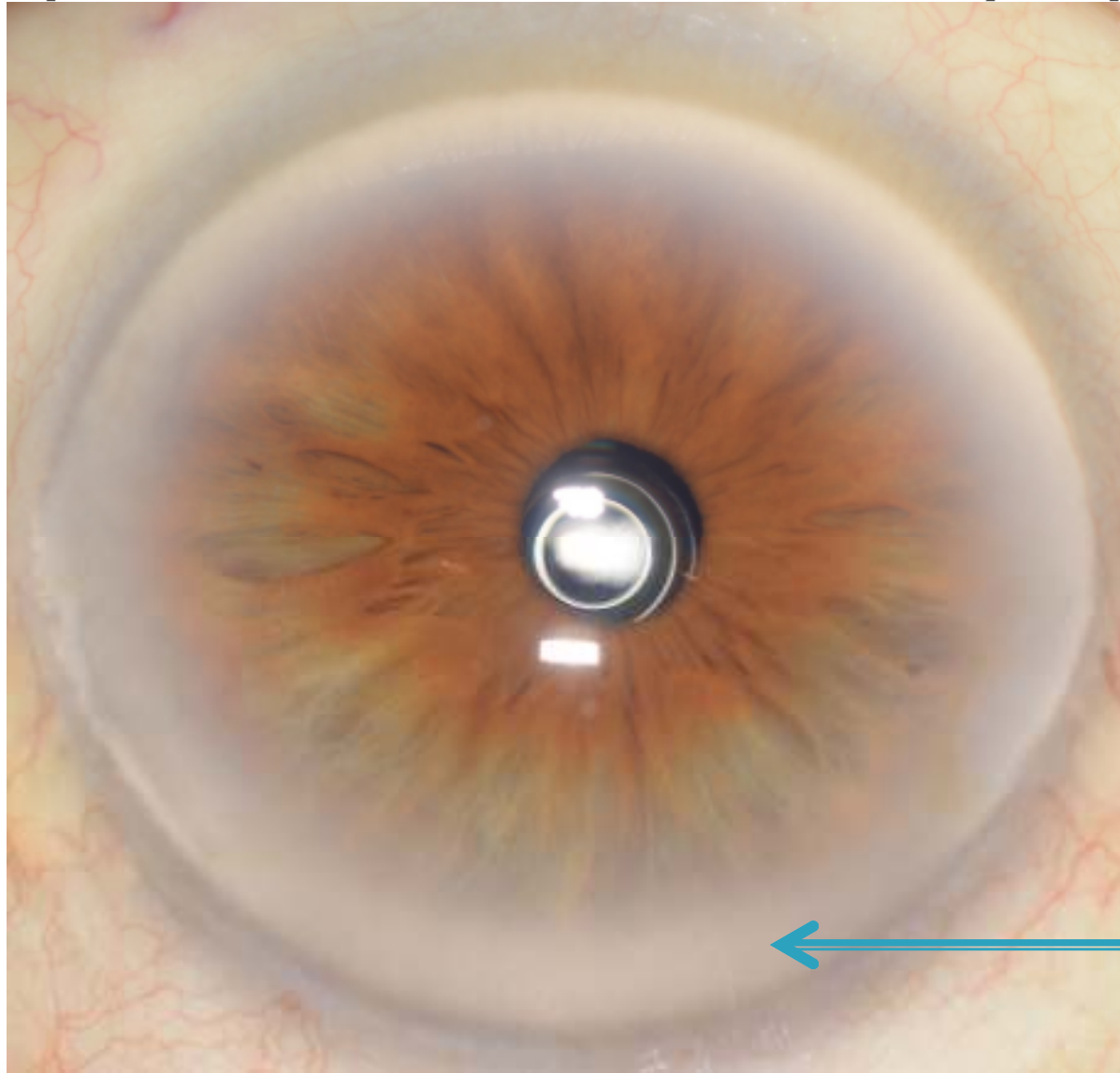


# Lipemic Diathesis Lymphatic Eye





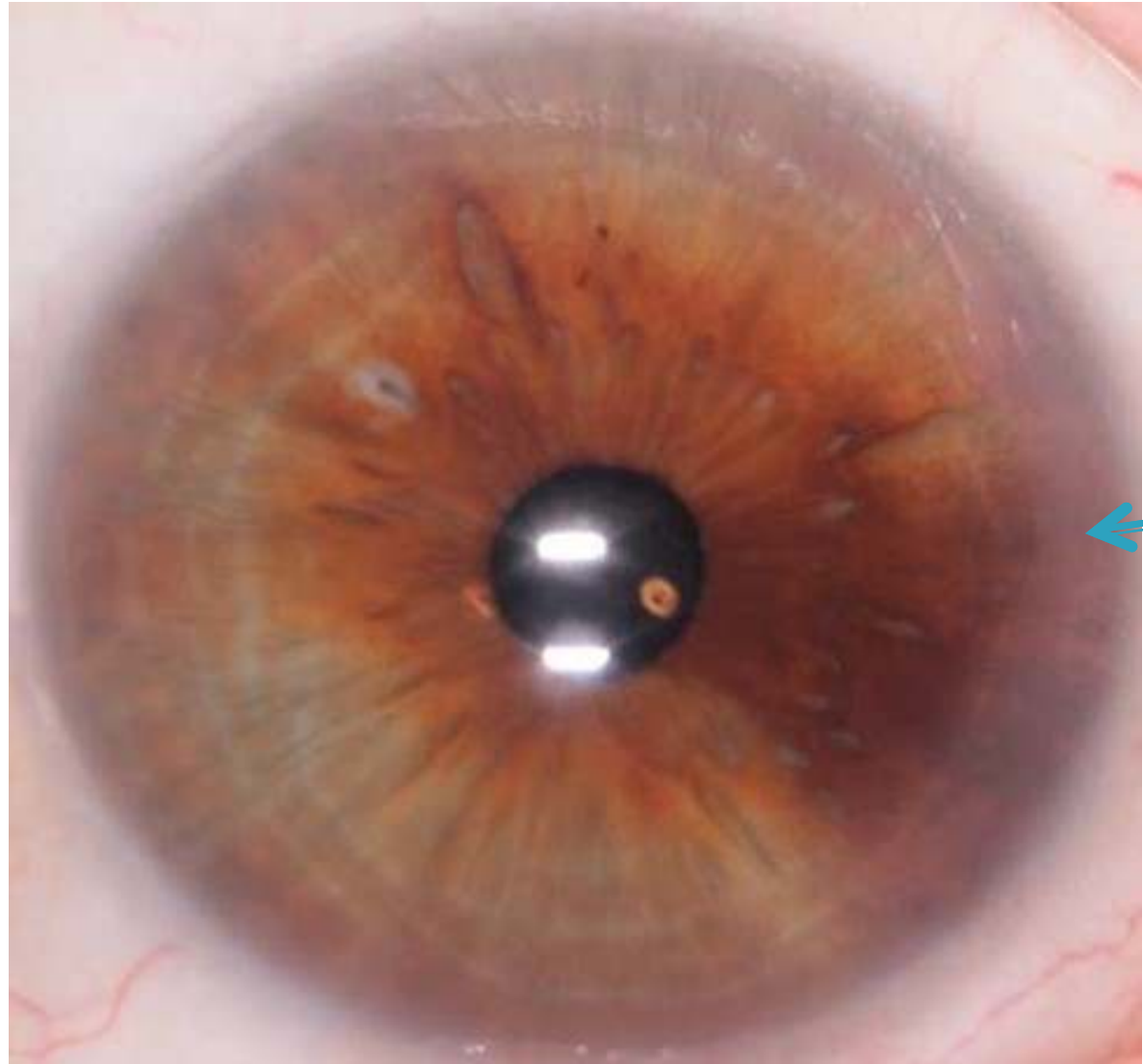
# Lipemic Diathesis Biliary Eye





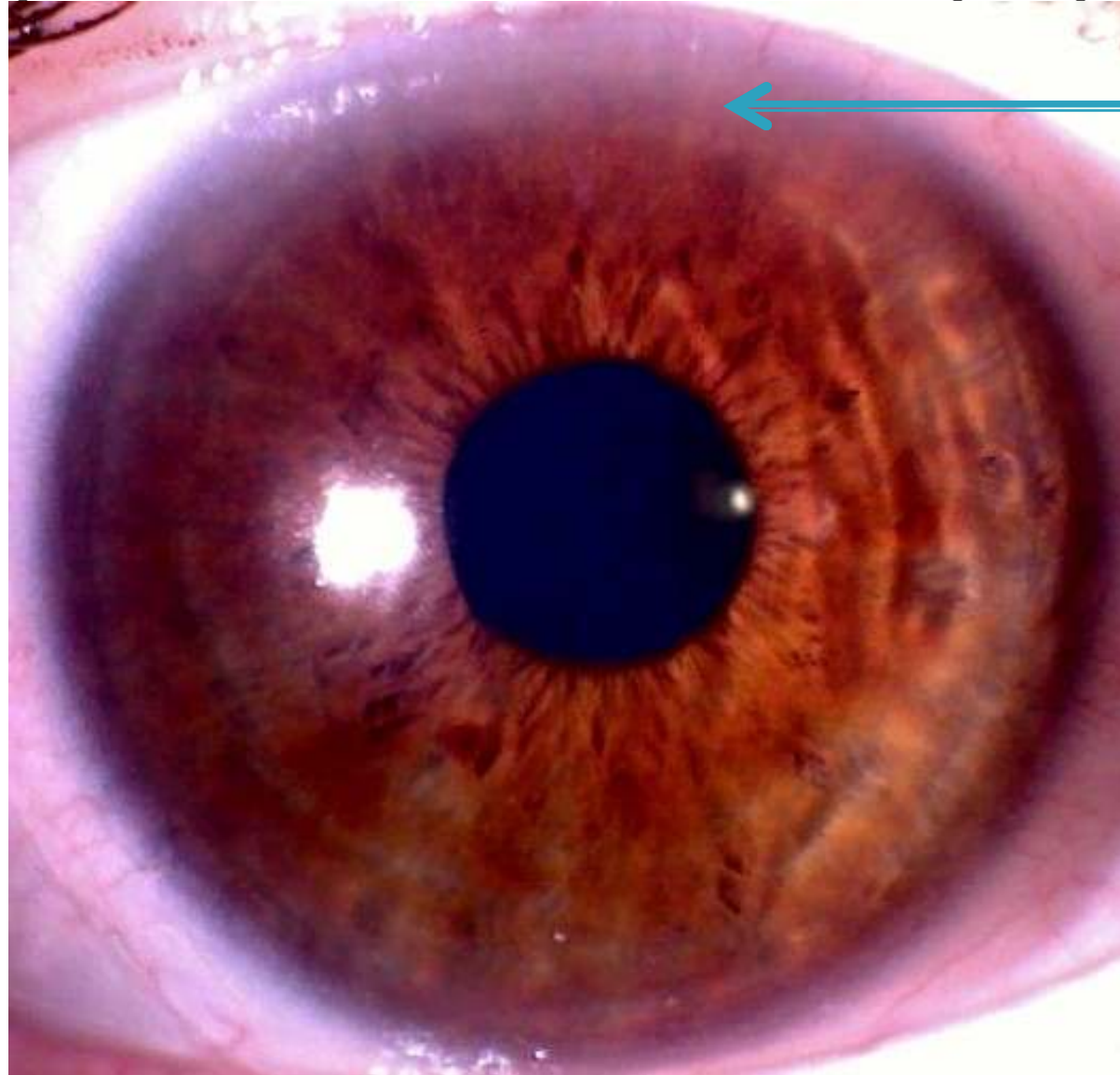


# Lipemic Diathesis Biliary Eye



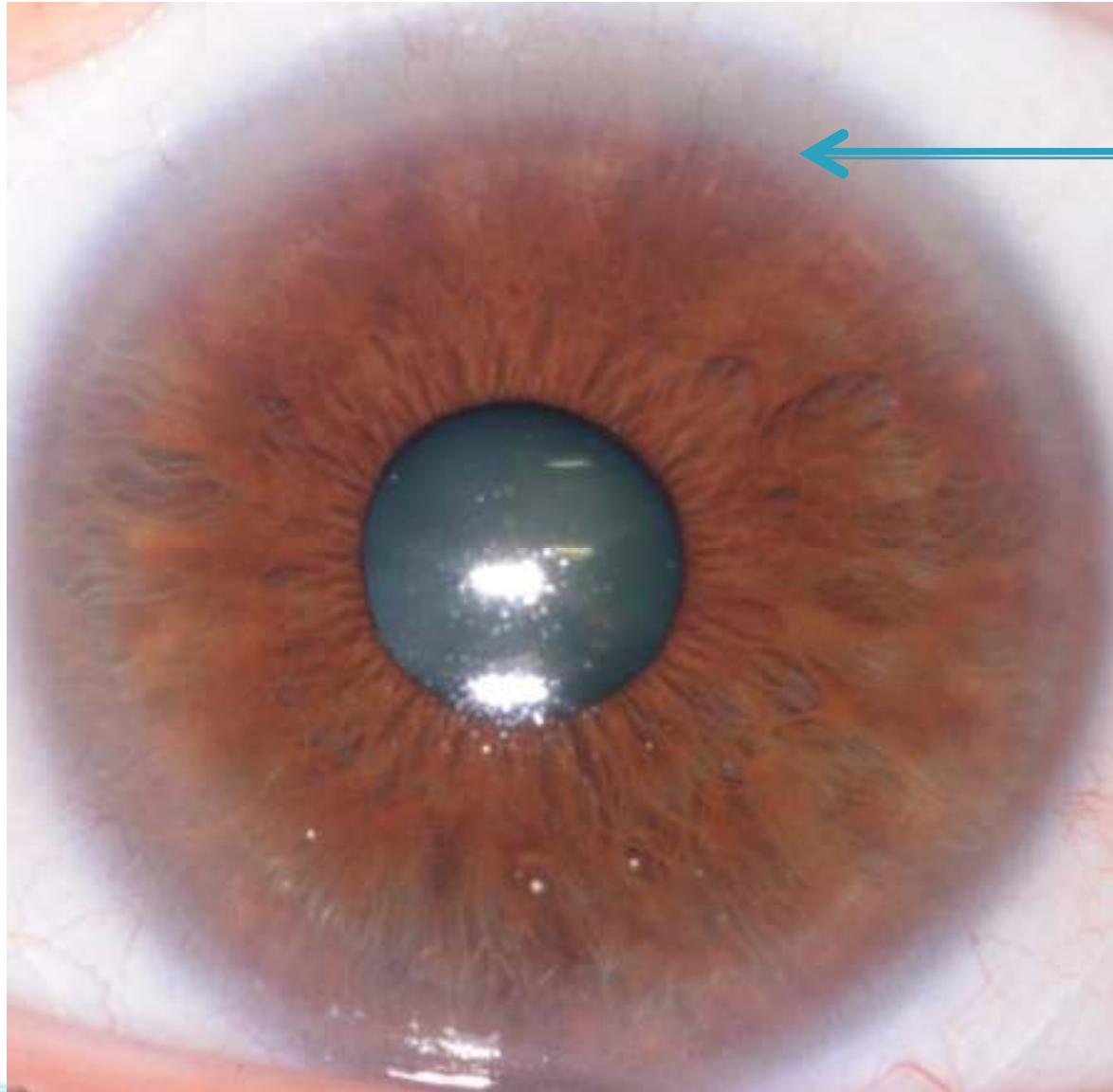


# Lipemic Diathesis Biliary Eye



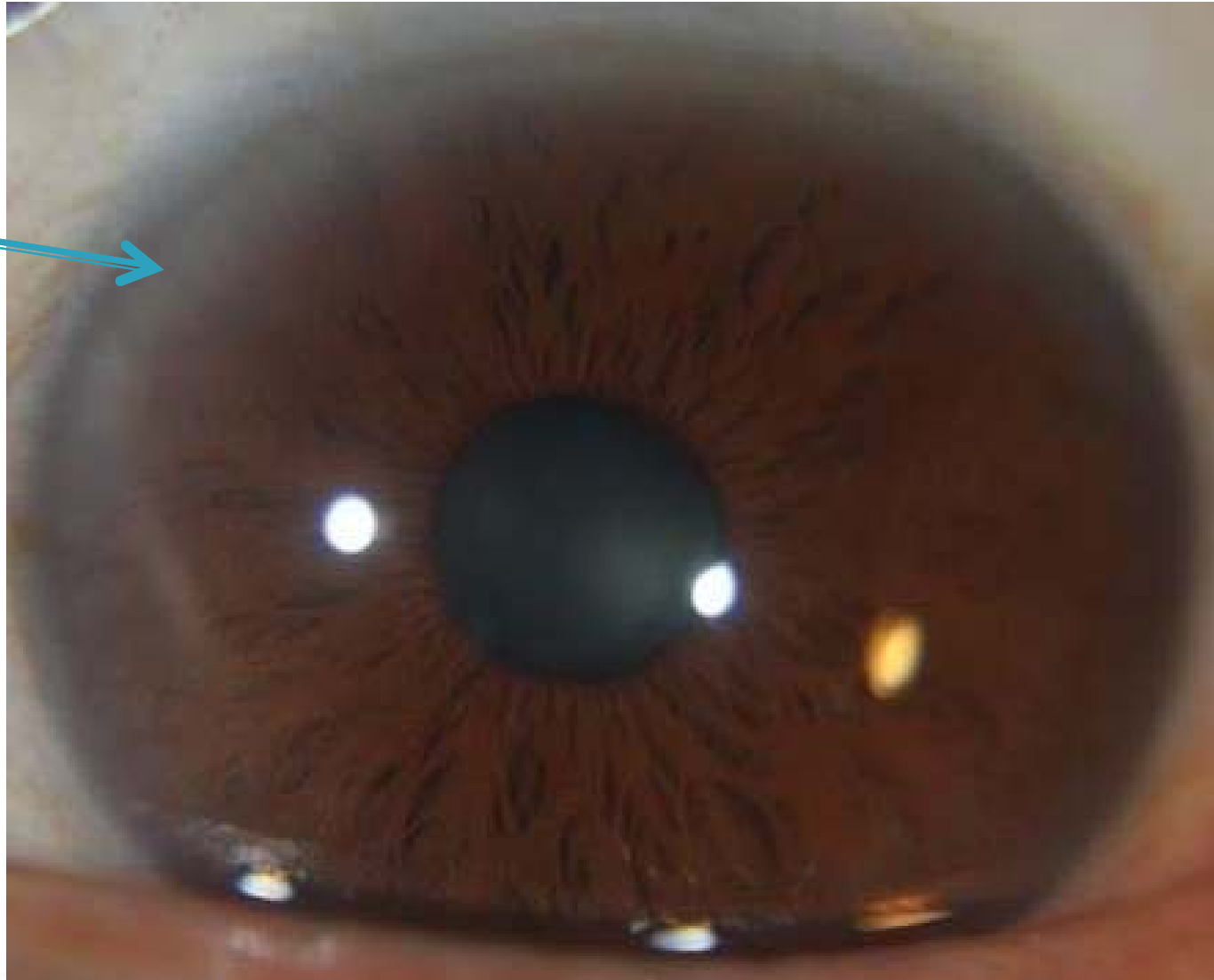


# Lipemic Diathesis Biliary Eye



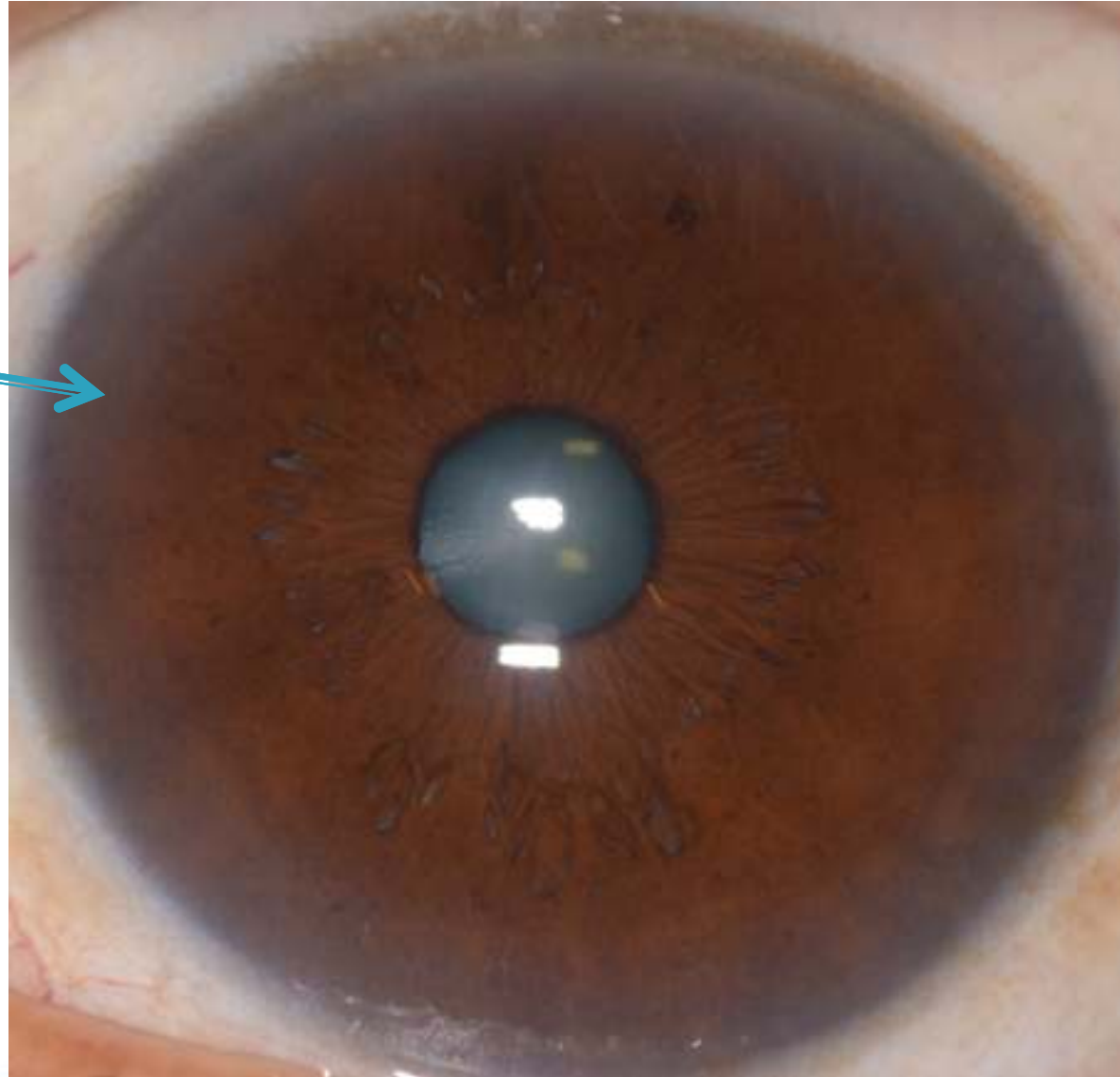


# Lipemic Diathesis Hematogenous Eye





# Lipemic Diathesis Hematogenous Eye





# Lipemic Diathesis Hematogenic Eye



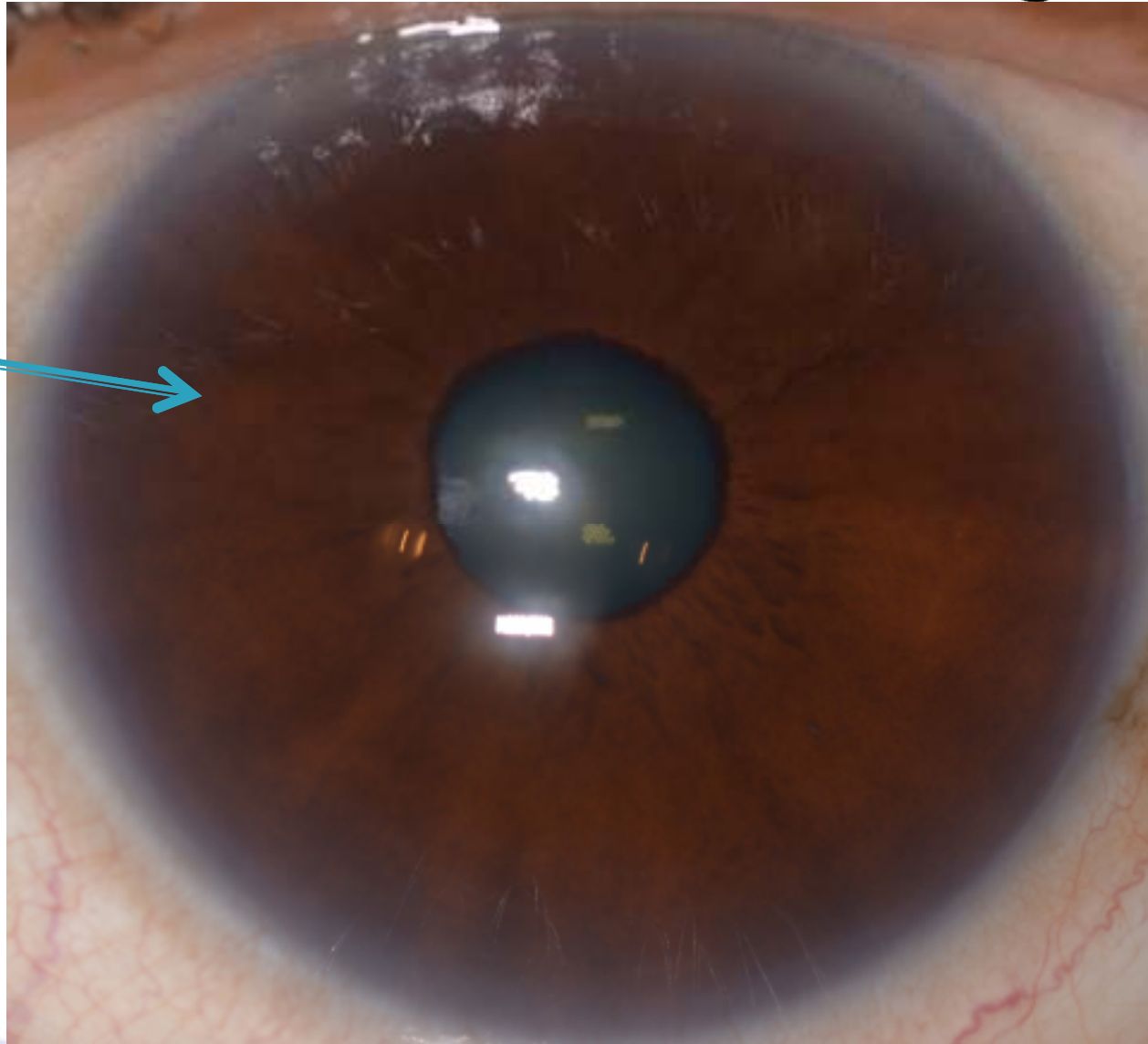
This sign is a corneal marking that appears on the cornea and NOT the iris.

If this sign is seen in someone under the age of 40, they need to be under a medical physician's care.

This sign is noted as someone who is aging.



# Lipemic Diathesis Hematogenous Eye





# Lipemic Diathesis Hematogenous Eye

