


Welcome everyone!

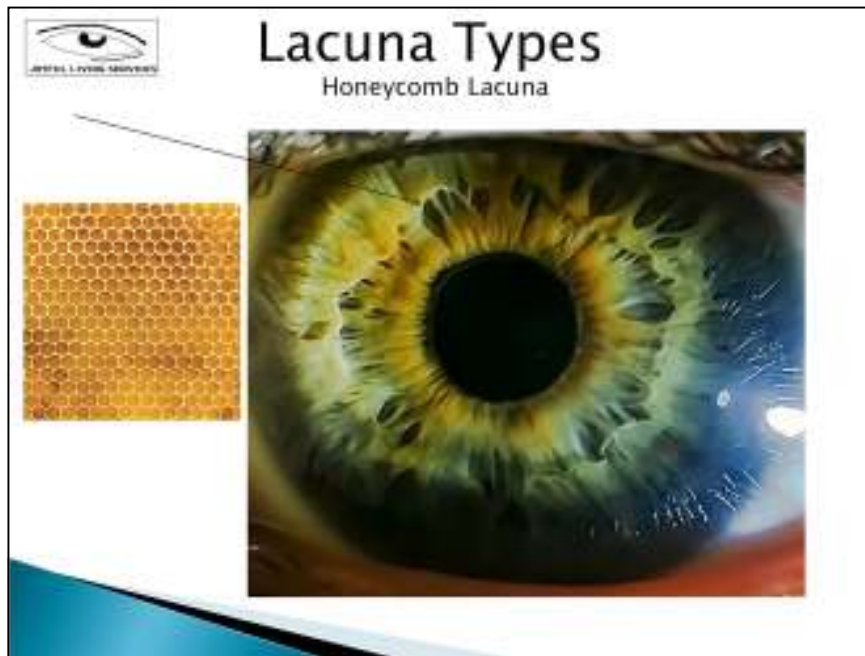


Lacuna Types

- › Honeycomb
- › Stairstep
- › Torpedo or Cigar
- › Beak Straight or Curved
- › Collarette Crypt
- › Tulip Lacuna
- › Shoe Lacuna
- › Asparagus Lacuna
- › Medusa/Jellyfish Lacuna
- › Neuronal Netting
- › Leaf Lacuna
- › Polypose Lacuna

Lacuna Types:

- Honeycomb
- Stairstep
- Torpedo or Cigar
- Beak Straight or Curved
- Collarette Crypt
- Tulip Lacuna
- Shoe Lacuna
- Asparagus Lacuna
- Medusa/Jellyfish Lacuna
- Neuronal Netting
- Leaf Lacuna
- Polypose Lacuna



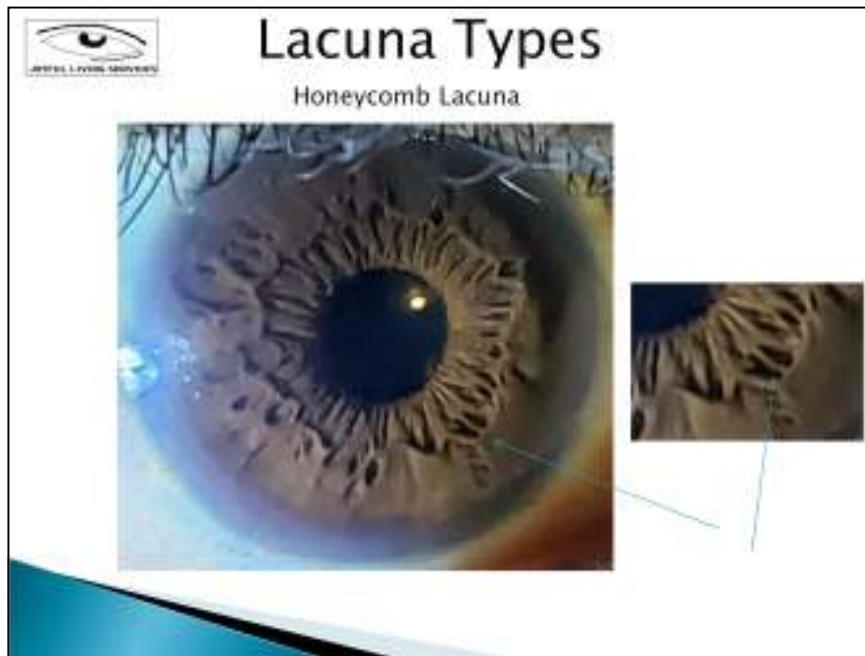
Honeycomb Lacuna

Webbing or a cluster of small crypts that are connected; most commonly found in the nutritive zone (pupillary zone).

If it is dark inside it will indicate lowered vitality where it is found.

If it is found in the pancreas or liver or nutritive zone it may indicate an environment that is conducive to parasites.

It is topostabile in the organ or tissue where it is found.



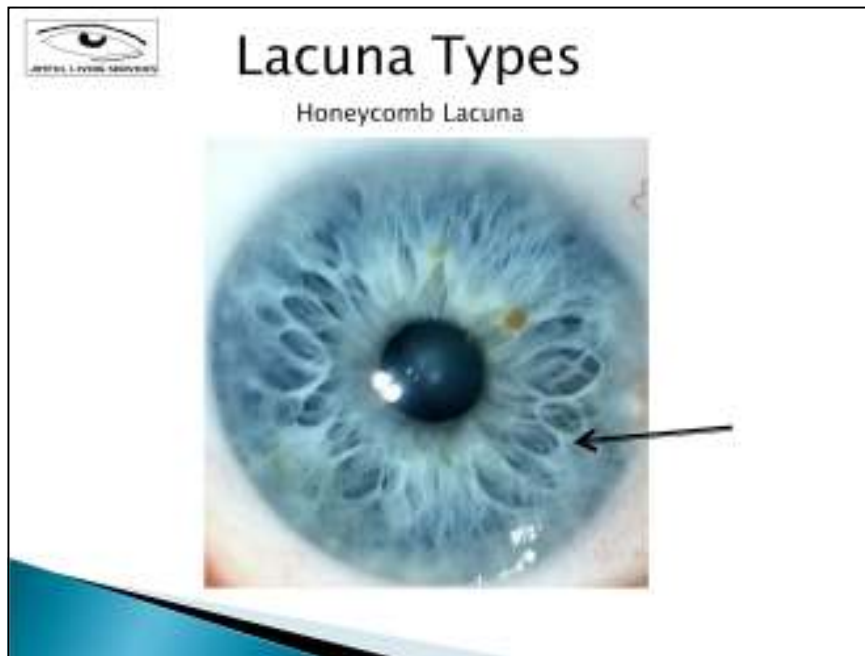
Honeycomb Lacuna

Webbing or a cluster of small crypts that are connected; most commonly found in the nutritive zone (pupillary zone).

If it is dark inside it will indicate lowered vitality where it is found.

If it is found in the pancreas or liver or nutritive zone it may indicate an environment that is conducive to parasites.

It is topostabile in the organ or tissue where it is found.



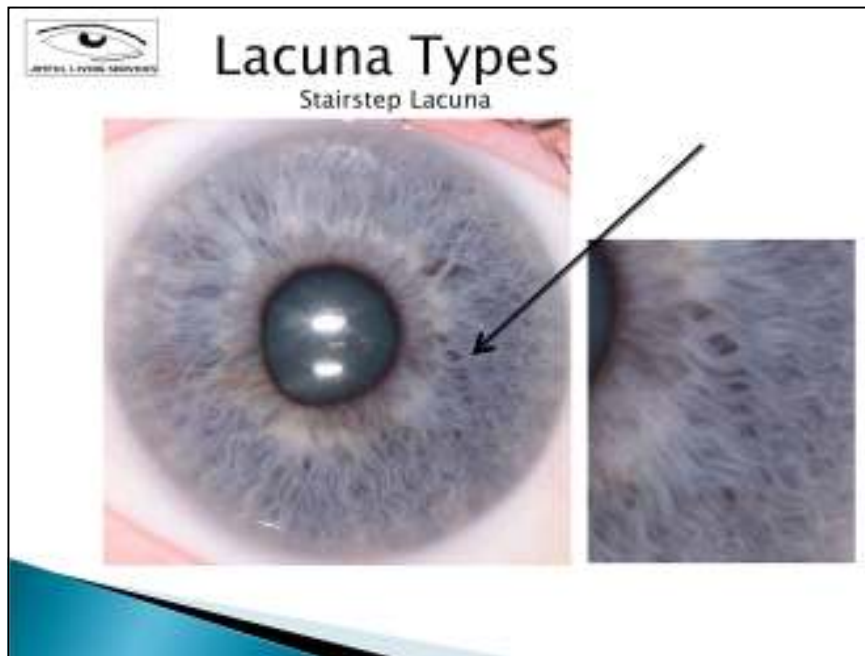
Honeycomb Lacuna

Webbing or a cluster of small crypts that are connected; most commonly found in the nutritive zone (pupillary zone).

If it is dark inside it will indicate lowered vitality where it is found.

If it is found in the pancreas or liver or nutritive zone it may indicate an environment that is conducive to parasites.

It is topostabile in the organ or tissue where it is found.



Stairstep Lacuna

This looks like stairs or a ladder.

It is a genetic marker.

It is a serious sign and can indicate possible (not probable) malignancy.

It can be found anywhere in the iris.

Used to be called a roof tile lacuna.

It is topostabile for the organ in which it is found.



Stairstep Lacuna

This looks like stairs or a ladder.

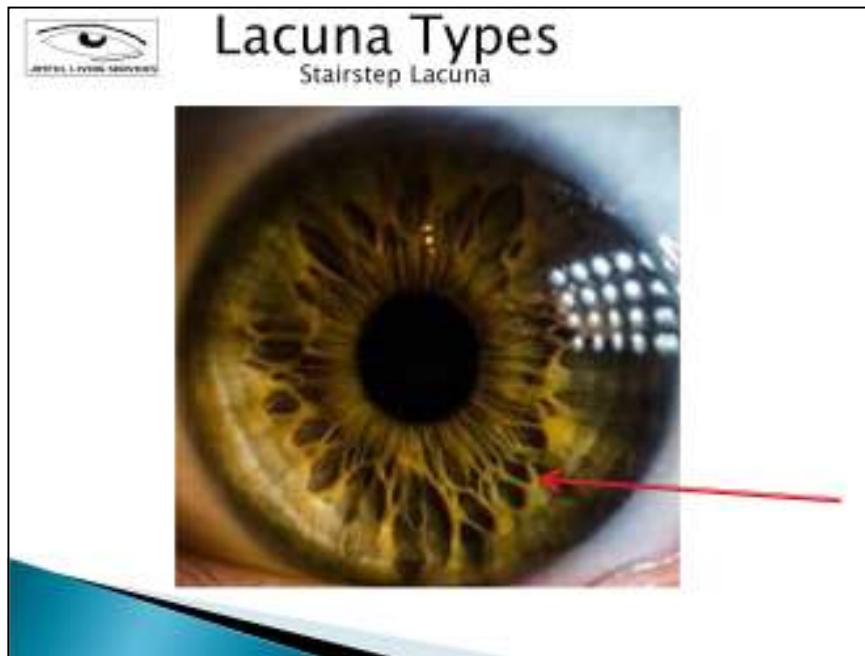
It is a genetic marker.

It is a serious sign and can indicate possible (not probable) malignancy.

It can be found anywhere in the iris.

Used to be called a roof tile lacuna.

It is topostabile for the organ in which it is found.



Stairstep Lacuna

This looks like stairs or a ladder.

It is a genetic marker.

It is a serious sign and can indicate possible (not probable) malignancy.

It can be found anywhere in the iris.

Used to be called a roof tile lacuna.

It is topostabile for the organ in which it is found.



Torpedo or Cigar Lacuna

This lacuna is encroaching on the collarette. It looks like it is pushing into the collarette.

It shows a lack of nerve energy in the nerves of the bowel.

It is topostabile wherever it is in the organ areas.

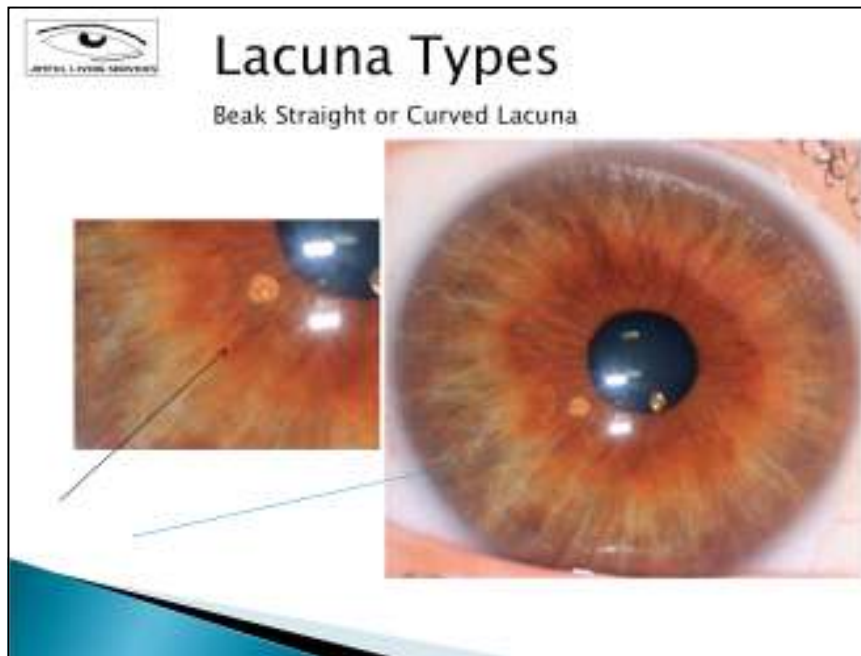


Torpedo or Cigar Lacuna

This lacuna is encroaching on the collarette. It looks like it is pushing into the collarette.

It shows a lack of nerve energy in the nerves or the bowel.

It is topostabile wherever it is in the organ areas.



Beak Straight or Curved Lacuna

This lacuna is named by a German Iridologist named Rudolf Schnable and is known as the “Schnabel beak”.

It is tiny and shaped like the beak of a small bird.

It affects the abdominal area and indicates weakness of the nerve supply.

If it breaks through the collarette or flattens it is considered more serious.

This sign is topostabile.

There are 2 types:

1. **Straight Pointed Beak**: This is more serious. The more it penetrates the collarette, the more it effects the nervous system and digestion.
2. **Curved Beak**: This is an indicator of a benign condition and is less serious.



Beak Straight or Curved Lacuna

This lacuna is named by a German Iridologist named Rudolf Schnable and is known as the “Schnabel beak”.

It is tiny and shaped like the beak of a small bird.

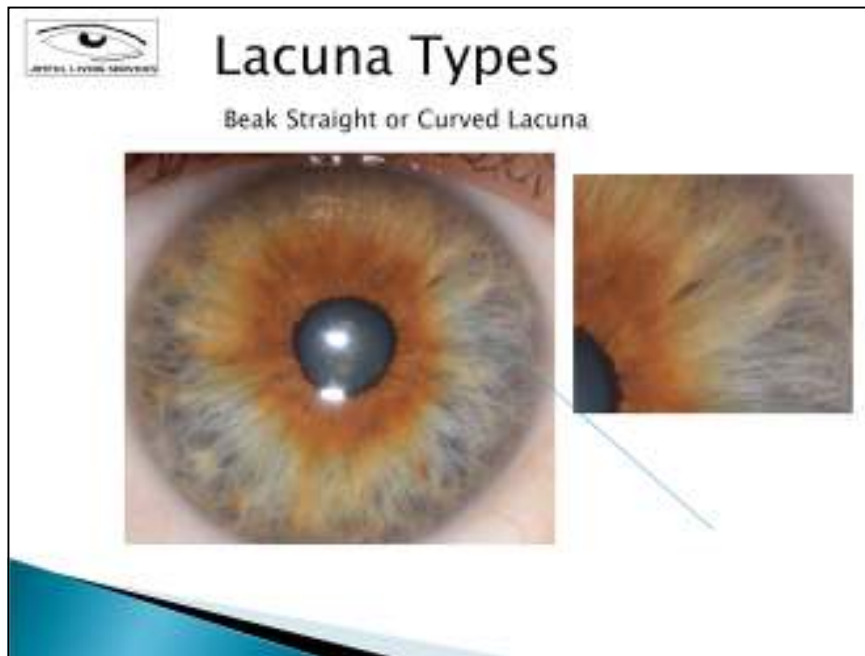
It affects the abdominal area and indicates weakness of the nerve supply.

If it breaks through the collarette or flattens it is considered more serious.

This sign is topostabile.

There are 2 types:

1. **Straight Pointed Beak**: This is more serious. The more it penetrates the collarette, the more it effects the nervous system and digestion.
2. **Curved Beak**: This is an indicator of a benign condition and is less serious.



Beak Straight or Curved Lacuna

This lacuna is named by a German Iridologist named Rudolf Schnable and is known as the “Schnabel beak”.

It is tiny and shaped like the beak of a small bird.

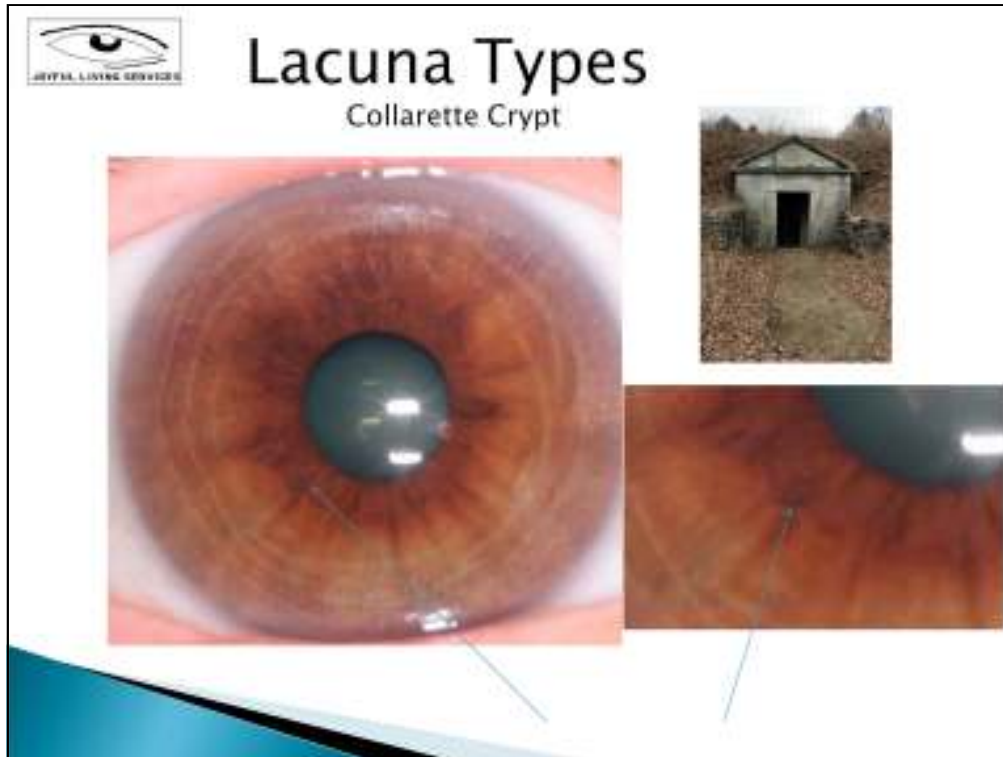
It affects the abdominal area and indicates weakness of the nerve supply.

If it breaks through the collarette or flattens it is considered more serious.

This sign is topostabile.

There are 2 types:

1. **Straight Pointed Beak**: This is more serious. The more it penetrates the collarette, the more it effects the nervous system and digestion.
2. **Curved Beak**: This is an indicator of a benign condition and is less serious.



Collarette Crypt

These are diamond shaped tiny black lacunae.

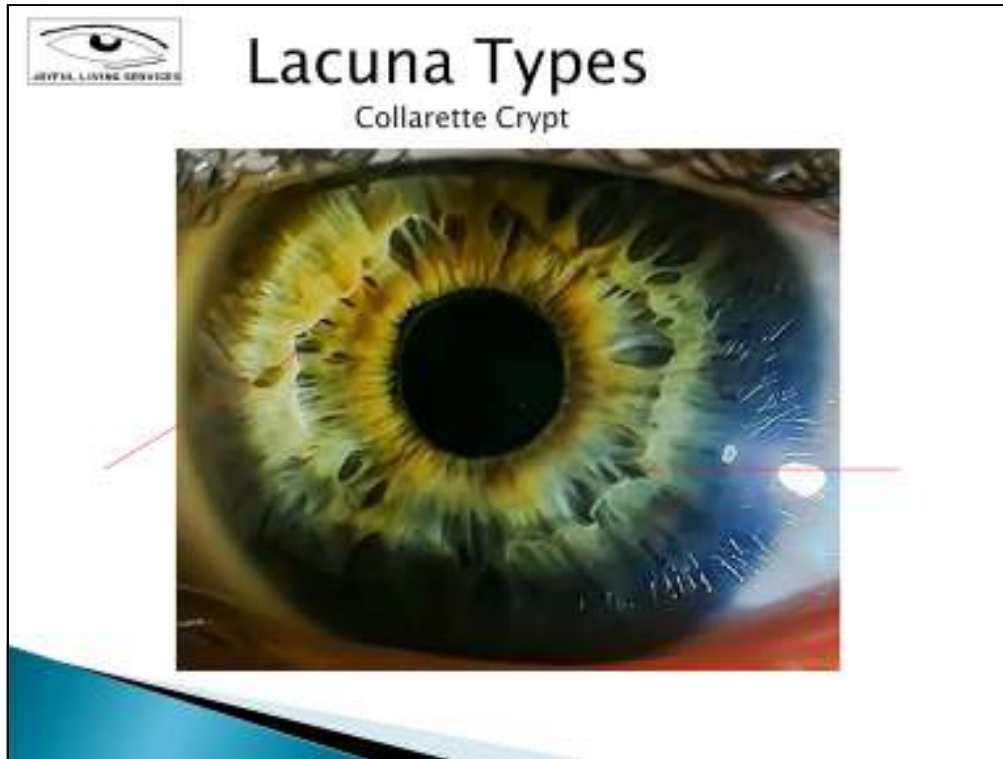
Indicate digestive problems.

Usually there is a family history of gastrointestinal issues.

It is topostabile meaning wherever it is found there can be issues.

It is always found inside or attached to the collarette.

Tiny dark black crypt-looking markings found outside the collarette are known as defect signs. These are also topostabile to where they are found.



Collarette Crypt

These are diamond shaped tiny black lacunae.

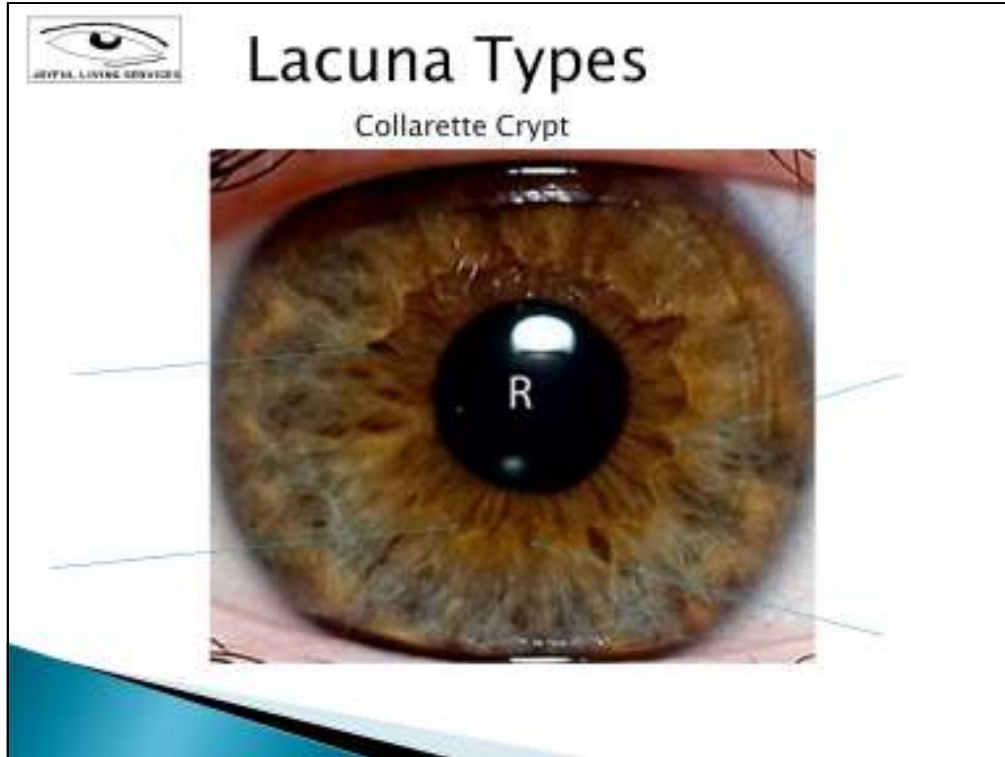
Indicate digestive problems.

Usually there is a family history of gastrointestinal issues.

It is topostabile meaning wherever it is found there can be issues.

It is always found inside or attached to the collarette.

Tiny dark black crypt-looking markings found outside the collarette are known as defect signs. These are also topostabile to where they are found.



Collarette Crypt

These are diamond shaped tiny black lacunae.

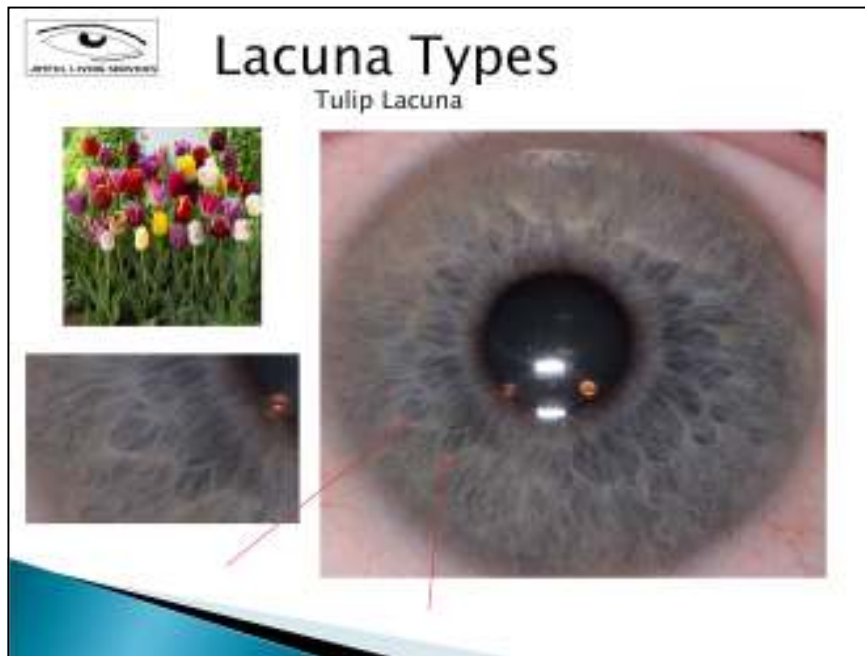
Indicate digestive problems.

Usually there is a family history of gastrointestinal issues.

It is topostabile meaning wherever it is found there can be issues.

It is always found inside or attached to the collarette.

Tiny dark black crypt-looking markings found outside the collarette are known as defect signs. These are also topostabile to where they are found.



Tulip Lacuna

This lacuna is usually attached to the collarette.

It is often in the head and sinus reaction fields but it can be found anywhere.

It might indicate nasal polyps.

This lacuna can look like a cluster of three lacunae joined together to form a tulip shape.

It is topostabile to the area it resides.



Tulip Lacuna

This lacuna is usually attached to the collarette.

It is often in the head and sinus reaction fields but it can be found anywhere.

It might indicate nasal polyps.

This lacuna can look like a cluster of three lacunae joined together to form a tulip shape.

It is topostabile to the area it resides.



Tulip Lacuna

This lacuna is usually attached to the collarette.

It is often in the head and sinus reaction fields but it can be found anywhere.

It might indicate nasal polyps.

This lacuna can look like a cluster of three lacunae joined together to form a tulip shape.

It is topostabile to the area it resides.



Shoe Lacuna

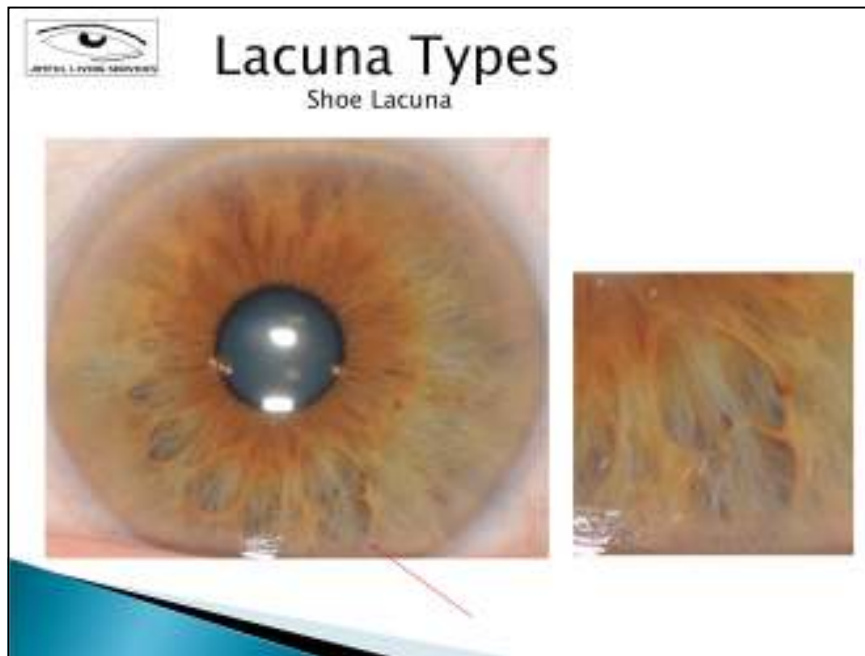
This looks like 2 lacunae that are shaped into a shoe.

Wherever they show up it indicates a kidney issue.

It is topolabile if it is in the thyroid or ear reaction fields.

It always points to the kidneys but also check the thyroid and ear reaction fields as well.

If it is in the kidney reaction field it is topostabile to the kidney.



Shoe Lacuna

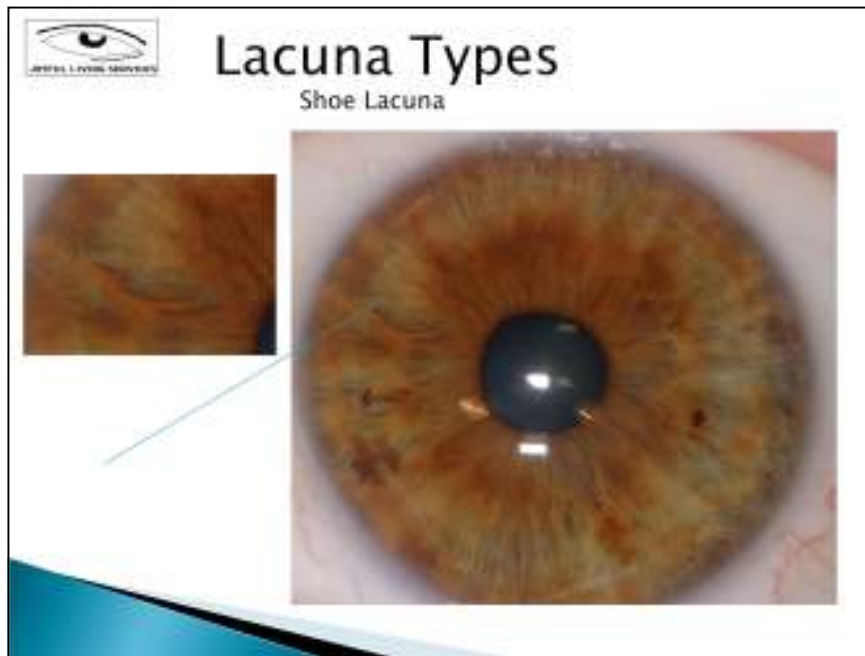
This looks like 2 lacunae that are shaped into a shoe.

Wherever they show up it indicates a kidney issue.

It is topolabile if it is in the thyroid or ear reaction fields.

It always points to the kidneys but also check the thyroid and ear reaction fields as well.

If it is in the kidney reaction field it is topostabile to the kidney.



Shoe Lacuna

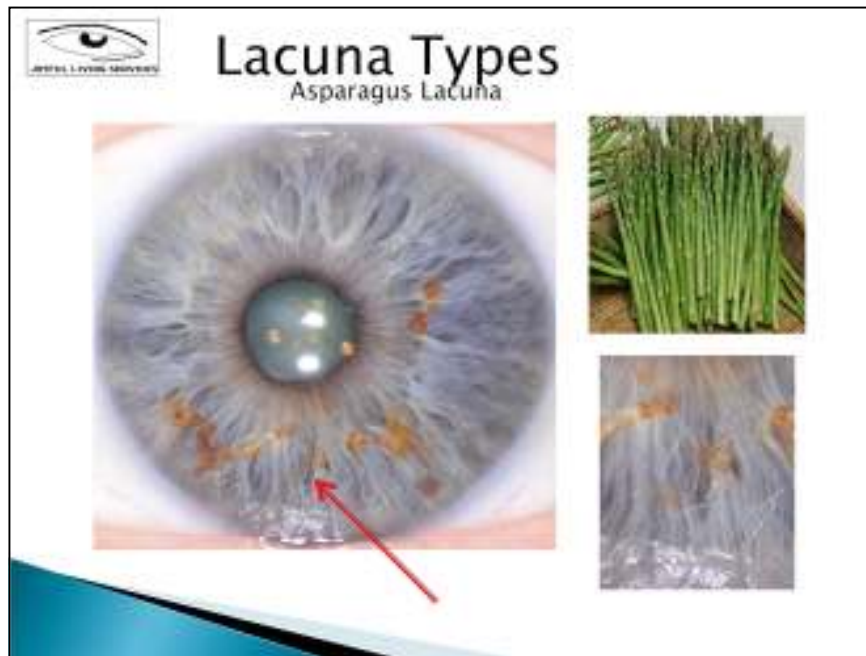
This looks like 2 lacunae that are shaped into a shoe.

Wherever they show up it indicates a kidney issue.

It is topolabile if it is in the thyroid or ear reaction fields.

It always points to the kidneys but also check the thyroid and ear reaction fields as well.

If it is in the kidney reaction field it is topostabile to the kidney.



Asparagus Lacuna

This lacuna is usually in the lower half of the iris and is shaped like an asparagus with the tip pointing to the outside.

It indicates a predisposition to a chronic degenerative condition with a tendency towards malignancy.

It is topostabile meaning wherever it is in the iris is where the problem is.

It is usually shaped like an asparagus with a narrow tip.



Asparagus Lacuna

This lacuna is usually in the lower half of the iris and is shaped like an asparagus with the tip pointing to the outside.

It indicates a predisposition to a chronic degenerative condition with a tendency towards malignancy.

It is topostabile meaning wherever it is in the iris is where the problem is.

It is usually shaped like an asparagus with a narrow tip.



Asparagus Lacuna

This lacuna is usually in the lower half of the iris and is shaped like an asparagus with the tip pointing to the outside.

It indicates a predisposition to a chronic degenerative condition with a tendency towards malignancy.

It is topostabile meaning wherever it is in the iris is where the problem is.

It is usually shaped like an asparagus with a narrow tip.



Medusa/Jellyfish Lacuna

This is an open lacuna that resembles long hair blowing in the wind.

It is usually in the bronchial, lung, kidney areas.

Signifies a family history of pathology in the corresponding area which could be anywhere.

It is topostabile.



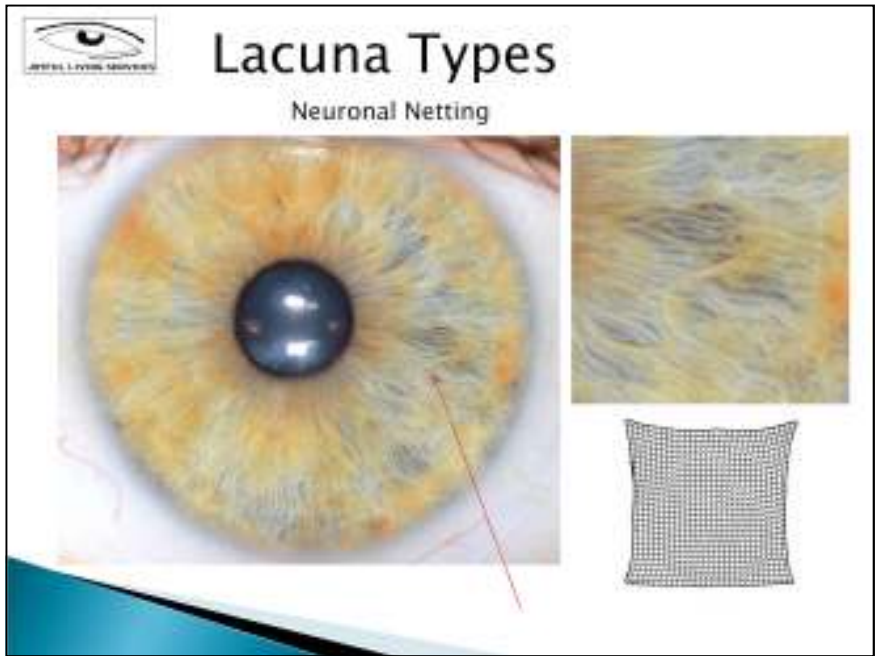
Medusa/Jellyfish Lacuna

This is an open lacuna that resembles long hair blowing in the wind.

It is usually in the bronchial, lung, kidney areas.

Signifies a family history of pathology in the corresponding area which could be anywhere.

It is topostabile.

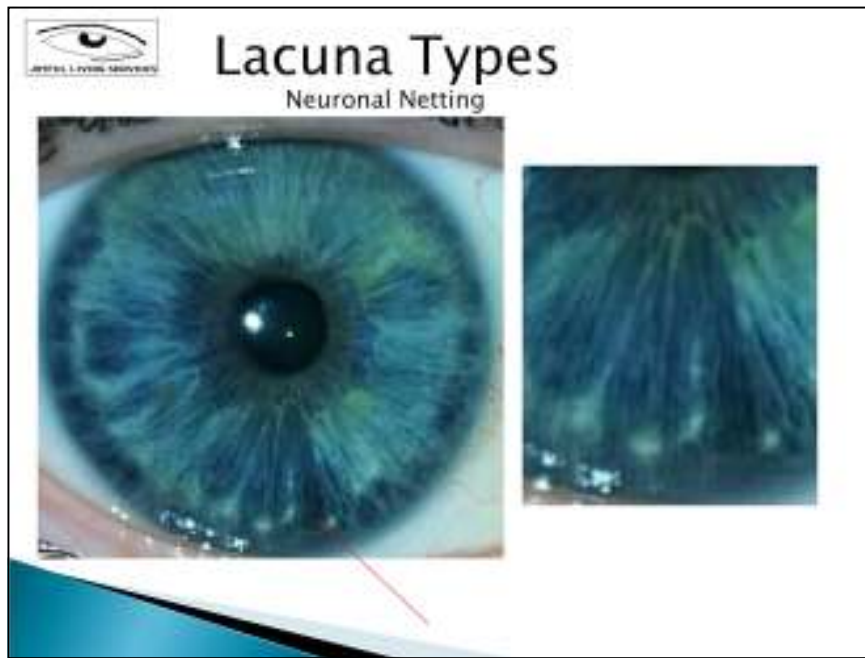


Neuronal Netting

This looks like a fishnet or burlap. Also like a network of fine fibers below the iris surface.

It is topostabile.

It is often found in the lung reaction field and indicates a family history of asthma, pneumonia, or bronchitis.



Neuronal Netting

This looks like a fishnet or burlap. Also like a network of fine fibers below the iris surface.

It is topostabile.

It is often found in the lung reaction field and indicates a family history of asthma, pneumonia, or bronchitis.



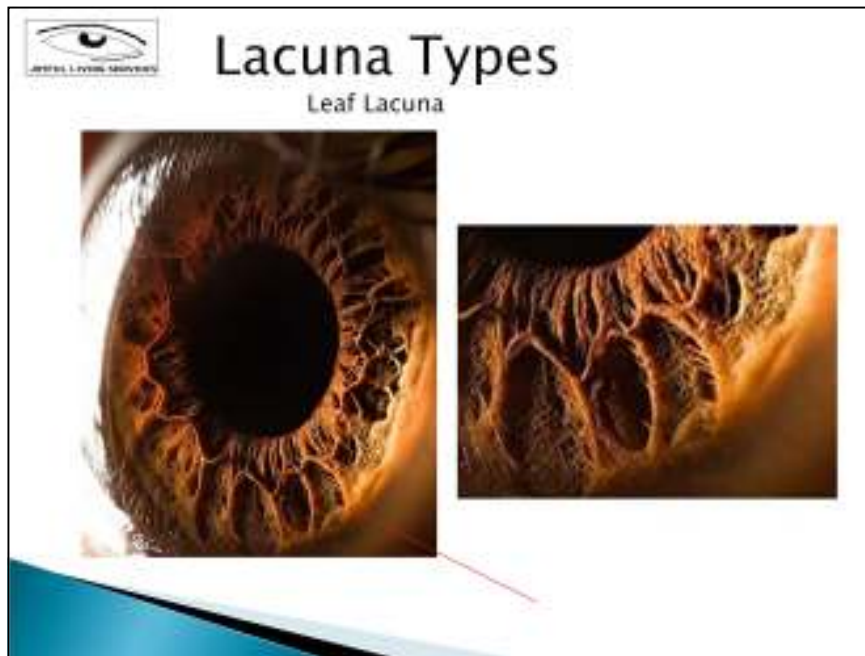
Leaf Lacuna

This is a closed lacuna with veins that look like a leaf with a spine down the middle.

It is usually but not always found in the pancreas, adrenal, and gallbladder reaction fields but it can also be seen anywhere in the iris.

If it is found in any one of the organs of section it affects all other organs of secretion.

It is either topolabile or topostabile.



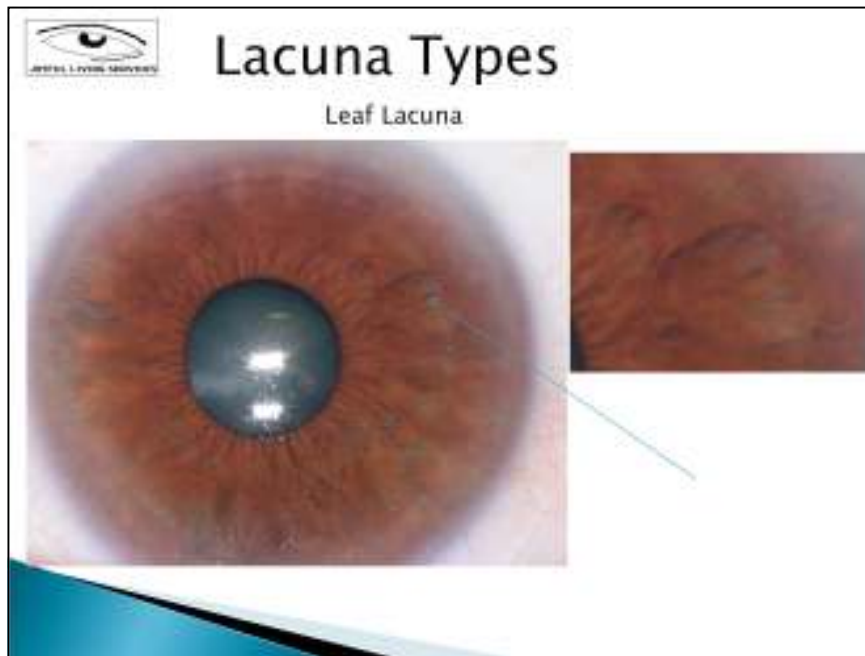
Leaf Lacuna

This is a closed lacuna with veins that look like a leaf with a spine down the middle.

It is usually but not always found in the pancreas, adrenal, and gallbladder reaction fields but it can also be seen anywhere in the iris.

If it is found in any one of the organs of section it affects all other organs of secretion.

It is either topolabile or topostabile.



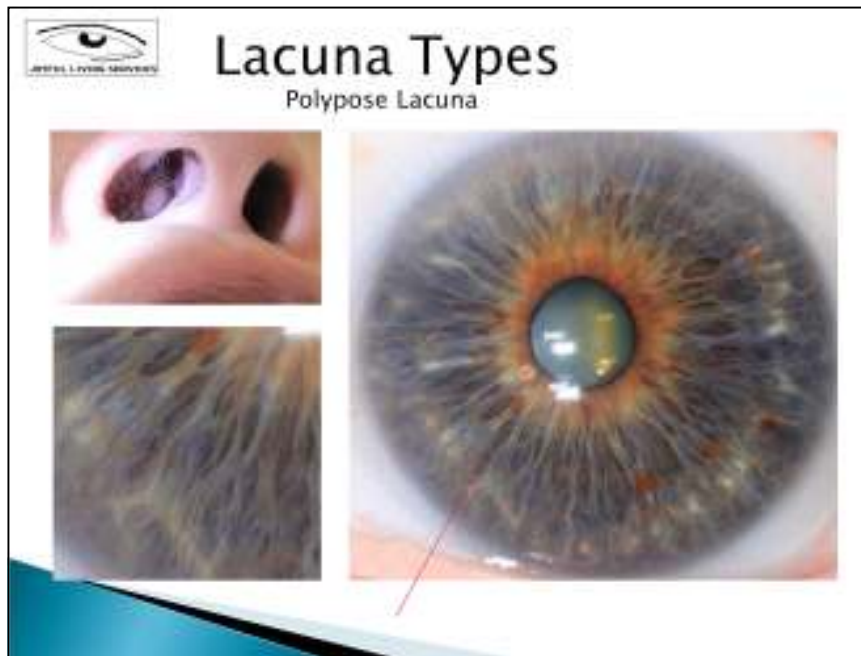
Leaf Lacuna

This is a closed lacuna with veins that look like a leaf with a spine down the middle.

It is usually but not always found in the pancreas, adrenal, and gallbladder reaction fields but it can also be seen anywhere in the iris.

If it is found in any one of the organs of section it affects all other organs of secretion.

It is either topolabile or topostabile.



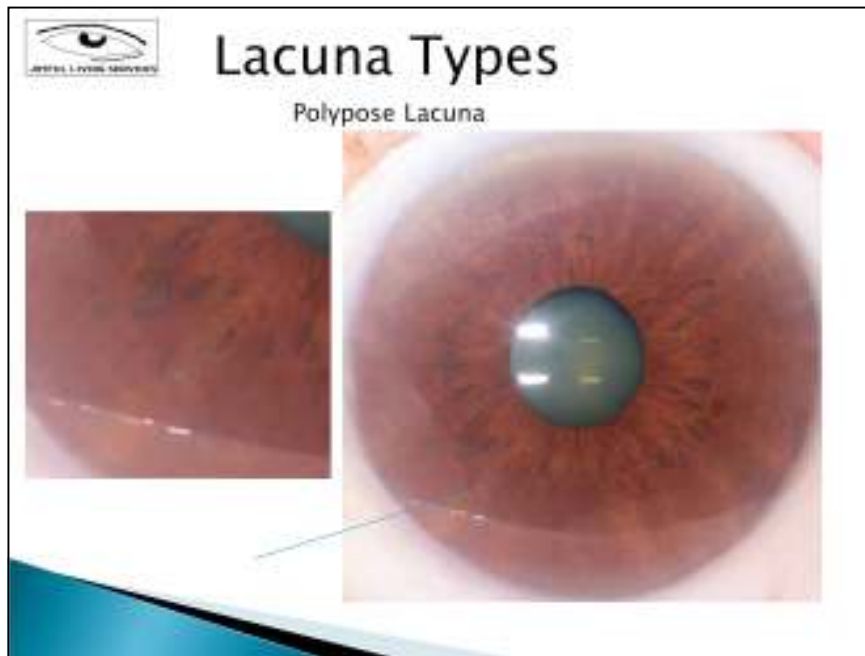
Polypose Lacuna

This lacuna is peanut shaped.

If it pushes into the collarette it indicates intestinal polyps.

It is topostabile to polyps anywhere it occurs.

Can show up in the rectal, sinus, nasal, colon, and other reaction fields.



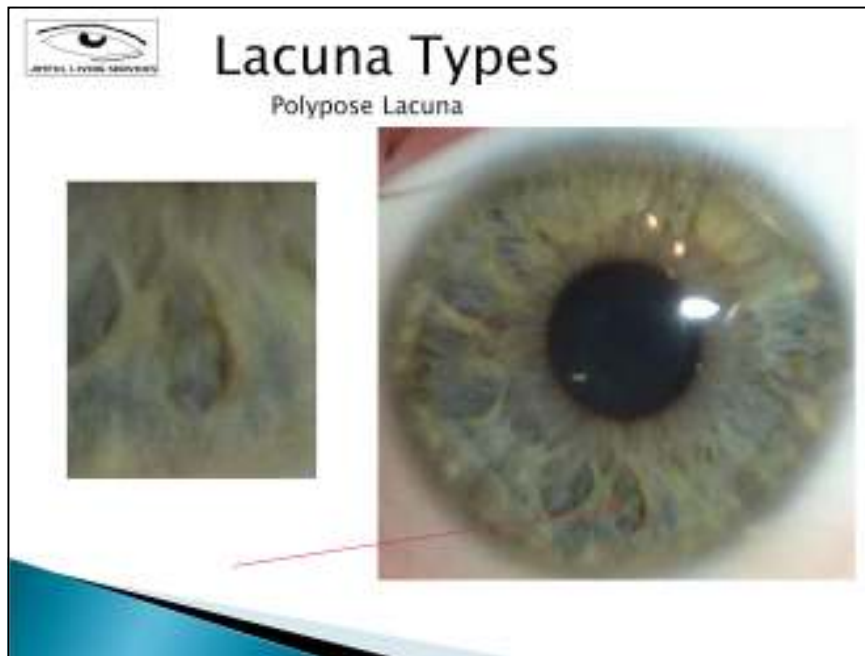
Polypose Lacuna

This lacuna is peanut shaped.

If it pushes into the collarette it indicates intestinal polyps.

It is topostabile to polyps anywhere it occurs.

Can show up in the rectal, sinus, nasal, colon, and other reaction fields.



Polypose Lacuna

This lacuna is peanut shaped.

If it pushes into the collarette it indicates intestinal polyps.

It is topostabile to polyps anywhere it occurs.

Can show up in the rectal, sinus, nasal, colon, and other reaction fields.