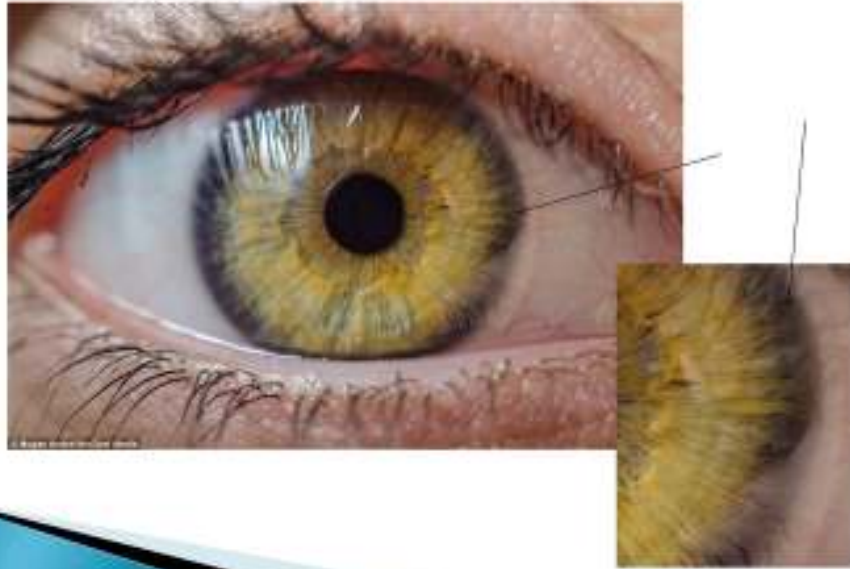




Iris Signs – Definitions

Scurf Rim



- Dark rim at the outer edge of the iris in zone seven.
- Caused by a thinning of iris fibers in that zone so is also a structural sign.
- It is a genetic sign and does not go away.
- May indicate a potential tendency for skin conditions such as acne, psoriasis, and eczema.
- Dry skin brushing can be helpful.



Iris Signs – Definitions

Scurf Rim

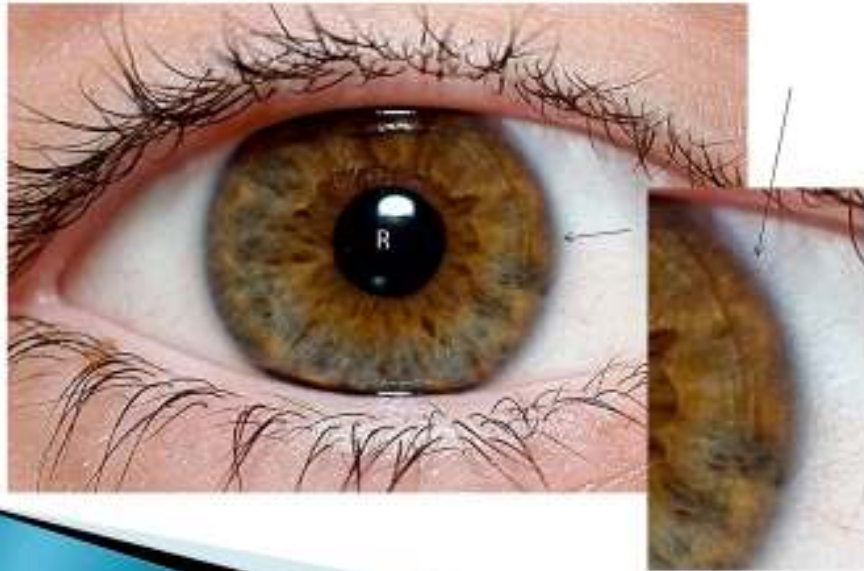


- Dark rim at the outer edge of the iris in zone seven.
- Caused by a thinning of iris fibers in that zone so is also a structural sign.
- It is a genetic sign and does not go away.
- May indicate a potential tendency for skin conditions such as acne, psoriasis, and eczema.
- Dry skin brushing can be helpful.



Iris Signs – Definitions

Circulatory Ring

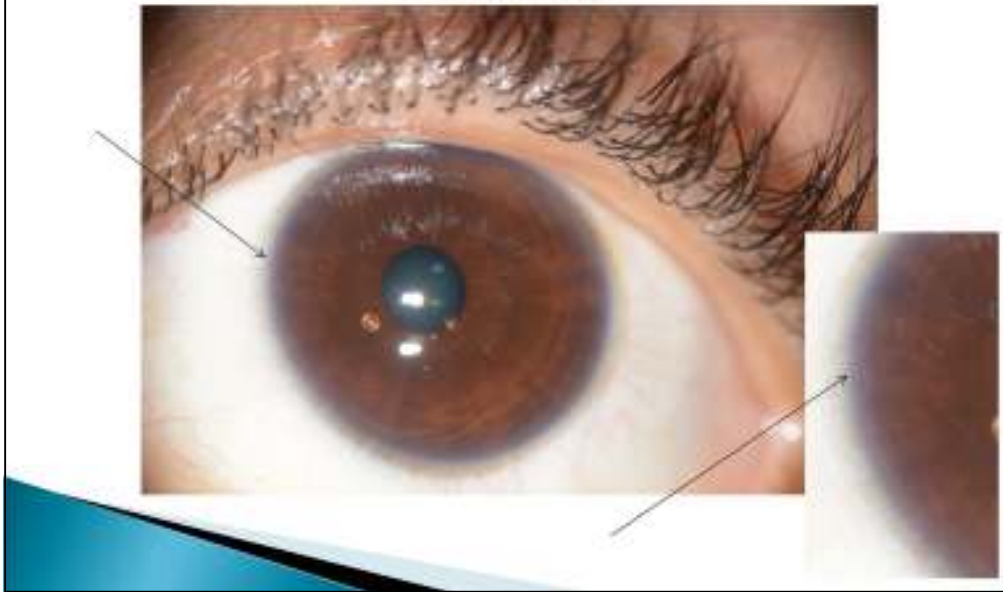


- Previously was called venous congestion.
- The ring is a blue glow outside the seventh zone of the iris.
- Considered to present a circulatory deficiency in the body.
- The person should be asked if they have cold or numb extremities.



Iris Signs – Definitions

Circulatory Ring



- Previously was called venous congestion.
- The ring is a blue glow outside the seventh zone of the iris.
- Considered to present a circulatory deficiency in the body.
- The person should be asked if they have cold or numb extremities.